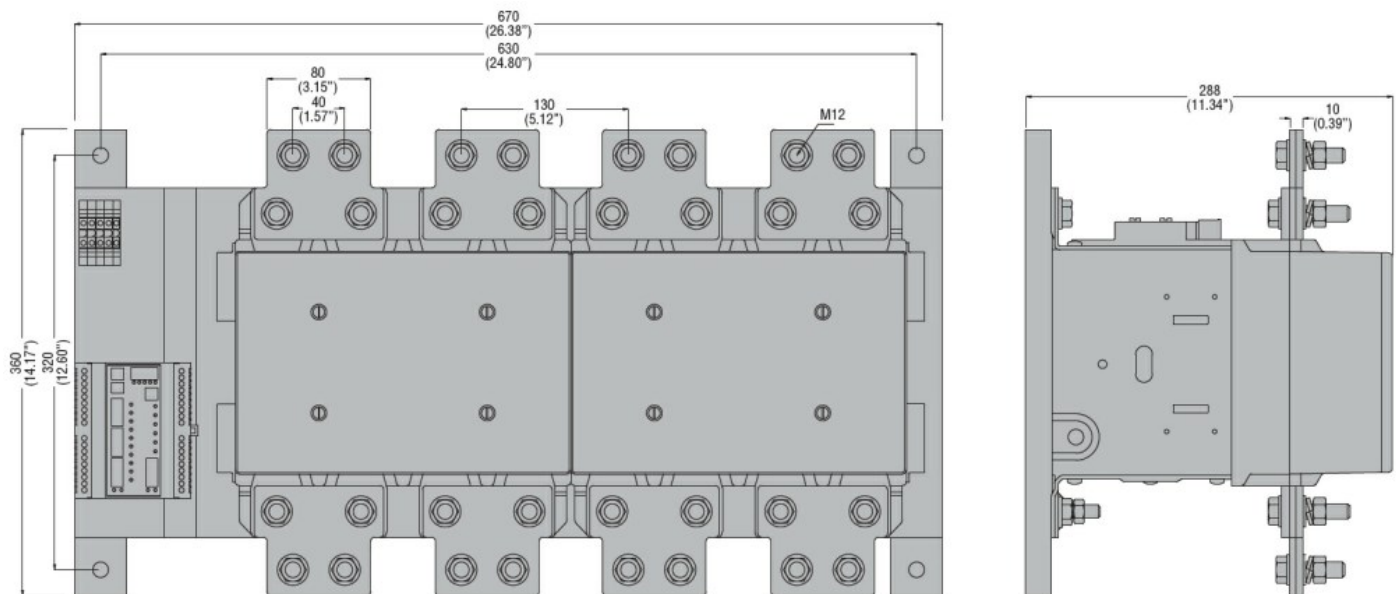




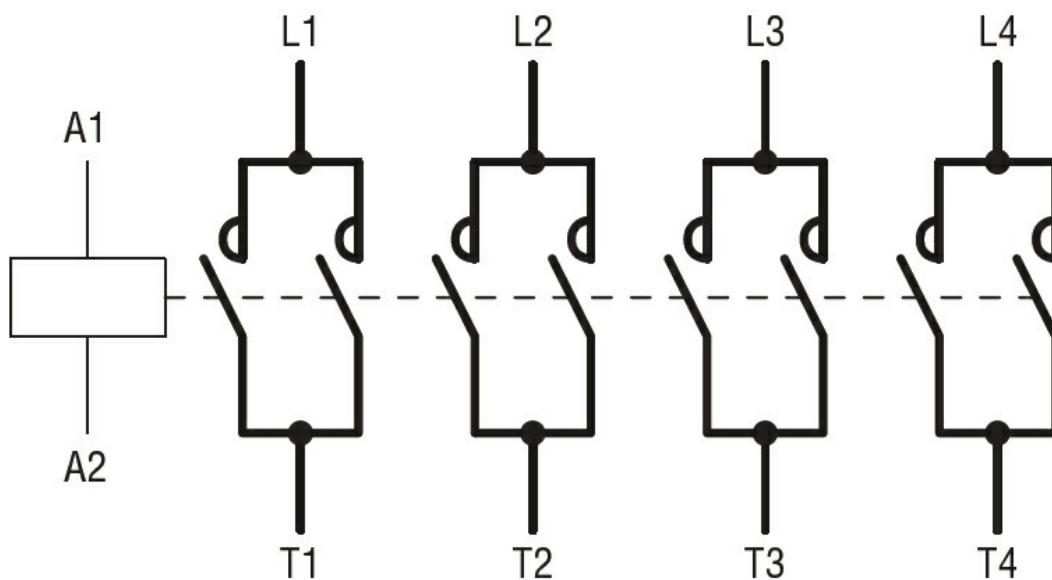
Product designation			Power contactor
Product type designation			B1250
Contact characteristics			
Number of poles		Nr.	4
Rated insulation voltage Ui IEC/EN		V	690
Rated impulse withstand voltage Uimp		kV	8
Operational frequency		min	Hz
		max	Hz
IEC Conventional free air thermal current Ith		A	1250
Operational current Ie		AC-1 (≤40°C)	A
		AC-1 (≤55°C)	A
		AC-1 (≤70°C)	A
Rated operational power AC-1 (T≤40°C)		230V	kW
		400V	kW
		500V	kW
		690V	kW
Short-time allowable current for 10s (IEC/EN60947-1)		A	6500
Protection fuse		gG (IEC)	A
			A
Making capacity (RMS value)		A	6300
Breaking capacity at voltage		440V	A
		500V	A
		690V	A
Resistance per pole (average value)		mΩ	7
Power dissipation per pole (average value)		Ith	W
Tightening torque for terminals		min	Nm
		max	Nm
		min	Ibin
		max	Ibin
Max number of wires simultaneously connectable		Nr.	2
Conductor section		AWG/Kcmil	
		max	2x 1500kcmil
Power terminal protection according to IEC/EN 60529			IP00
Mechanical features			
Operating position		normal	Vertical plan
		allowable	±30°
Fixing			Screw

Weight	g		5750
Conductor section	AWG/kcmil conductor section		
	max	2x 1500kcmil	
Auxiliary contact characteristics			
Thermal current I _{th}	A	16	
IEC/EN 60947-5-1 designation	A600 - P600		
Operating current AC15	230V	A	3
	400V	A	1.9
	500V	A	1.4
Operating current DC12	110V	A	5.7
Operating current DC13	24V	A	5.7
	48V	A	2.9
	60V	A	2.3
	125V	A	0.6
	220V	A	0.2
	600V	A	1.2
Operations			
Mechanical life	cycles	5000000	
Electrical life	cycles	700000	
Safety related data			
Performance level B10d according to EN/ISO 13489-1	rated load	cycles	700000
	mechanical load	cycles	5000000
Mirror contacts according to IEC/EN 60947-4-1	yes		
EMC compatibility	yes		
AC coil operating			
Rated AC voltage at 50/60Hz, 60Hz	min	V	220
	max	V	240
AC operating voltage	of 50/60Hz coil powered at 50Hz		
	pick-up		
	min	%U _s	80
	max	%U _s	110
	drop-out		
	min	%U _s	20
	max	%U _s	60
	of 50/60Hz coil powered at 60Hz		
	pick-up		
	min	%U _s	80
	max	%U _s	110
	drop-out		
	min	%U _s	20
	max	%U _s	60
	of 60Hz coil powered at 60Hz		
	pick-up		
	min	%U _s	80
	max	%U _s	110
	drop-out		

		min	%Us	20
		max	%Us	60
AC average coil consumption at 20°C				
of 50/60Hz coil powered at 50Hz				
		in-rush	VA	800
		holding	VA	45
of 50/60Hz coil powered at 60Hz				
		in-rush	VA	800
		holding	VA	45
Dissipation at holding ≤20°C 50Hz			W	40
DC coil operating				
DC rated control voltage				
		min	V	220
		max	V	240
DC operating voltage				
pick-up				
		min	%Us	80
Max cycles frequency				
Mechanical operation			cycles/h	1200
Operating times				
Average time for Us control				
in AC				
		Closing NO		
		min	ms	300
		max	ms	450
		Opening NO		
		min	ms	70
		max	ms	130
in DC				
		Closing NO		
		min	ms	300
		max	ms	450
		Opening NO		
		min	ms	70
		max	ms	130
UL technical data				
Contact rating of auxiliary contacts according to UL			A600 - P600	
Ambient conditions				
Temperature				
Operating temperature				
		min	°C	-50
		max	°C	60
Storage temperature				
		min	°C	-60
		max	°C	80
Max altitude			m	3000
Resistance & Protection				
Pollution degree			3	
Dimensions				



Wiring diagrams



Certifications and compliance

Compliance

CSA C22.2 n° 60947-1

CSA C22.2 n° 60947-4-1

IEC/EN 60947-1

IEC/EN 60947-4-1

UL 60947-1

UL 60947-4-1

Certificates

/

ETIM classification

ETIM 8.0

EC000066 -
Power contactor,
AC switching