



Product designation			Rotary cam switches		
Product type designation			7GN12		
General characteristics					
Switching diagram			10 - ON/OFF switch 3 poles		
N° of elements			2		
Mounting form			U11 - Front mounting with black handle without front plate for hole diam. 22mm fixing		
Contact characteristics					
Rated insulation voltage Ui			IEC/EN	V	690
			UL/CSA	V	600
Rated impulse withstand voltage Uimp				kV	6
Conventional free air thermal current Ith			IEC/EN	A	16
			UL/CSA	A	15
Rated operational voltage				V	480
Rated operational impulse voltage				kV	4
Maximum fuse size for short-circuit protection In (gG)			10kA	A	16
			15kA	A	10
			25kA	A	10
Rated short time current Icw			1s	A	200
Conductivity			10/5 mA/V		
Operational current Ie IEC/EN					
AC1/AC21A				A	16
AC15			110V	A	10
			220/230V	A	8
			380/400V	A	4
			660/690V	A	1.5
Rated operational power in AC					
Three-phase AC-3			220/230V	kW	2.5
			380/440V	kW	4
			500/690V	kW	5.5
Single-phase AC-3			110V	kW	0.8
			220/230V	kW	1.5

		380/440V	kW	2.2
Three-phase AC23A		220/230V	kW	3
		380/440V	kW	5.5
		500/690V	kW	7.5
Single-phase AC23A		110V	kW	0.8
		220/230V	kW	1.7
		380/440V	kW	3
Rated operational current in DC				
DC21A		48V	A	12
		60V	A	12
		110V	A	4
		220V	A	0.6
		440V	A	0.25
DC23A (poles in series)		24V	A	10 (1)
		48V	A	10 (2)
		60V	A	10 (3)
		110V	A	5 (3)
		220V	A	5 (4)
DC13		24V	A	12
		48V	A	10
		60V	A	8
		110V	A	1
		220V	A	0.4
		440V	A	0.15
Power dissipation			W	0.8
Mechanical features				
Terminals screw				M3
Tightening torque for terminals max			Nm	0.5
Conductor size				
AWG - Rigid cable		min	AWG	20
		Max	AWG	12
AWG - Flexible cable		min	AWG	20
		Max	AWG	14
Conductor size (IEC) - Flexible cable		min	mm ²	0.5
		Max	mm ²	2.5
Conductor size (IEC) - Rigid cable		min	mm ²	0.5
		Max	mm ²	2.5
Mechanical life			cycles	3x10 ⁶
UL technical data				
Motor power for direct-on-line control				
for three-phase motor		120V	HP	1.5
		240V	HP	3
for single-phase motor		120V	HP	0.5

240V HP 1

Ambient conditions

Temperature

Operating temperature

min	°C	-25
max	°C	+55

Storage temperature

min	°C	-40
max	°C	+70

Resistance & Protection

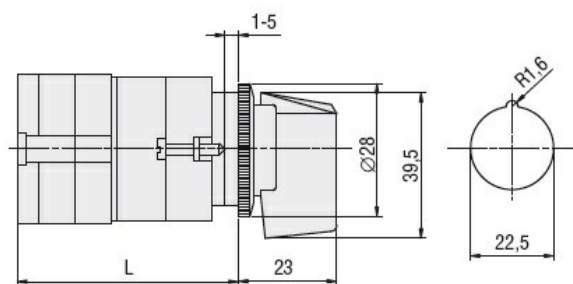
Frontal IP degree

IP40

Terminals IP degree

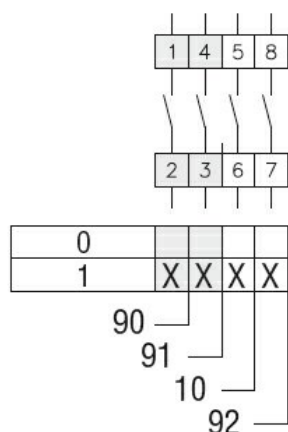
IP00

Dimensions



Series	L			
	1	2	3...8	
7GN12	47	56.7	66.4	114.9
7GN20	47	56.7	66.4	114.9
7GN25	51.4	65	78.6	146.6

Wiring diagrams



Certifications and compliance

Compliance

CSA C22.2 n° 14

IEC/EN/BS 60947-1

IEC/EN/BS 60947-3

IEC/EN/BS 60947-5-1

UL60947-4-1

Certificates

cCSAus

EAC

UL

ETIM classification

ETIM 8.0

EC001029 -
Selector switch,
complete