

Product designation			Rotary cam switches		
Product type designation			7GN12		
General characteristics					
Switching diagram			20 - Dahlander motor 2-speed reversing switch		
N° of elements			6		
Mounting form			U - Front mounting with black handle		
Contact characteristics					
Rated insulation voltage Ui			IEC/EN	V	690
			UL/CSA	V	600
Rated impulse withstand voltage Uimp				kV	6
Conventional free air thermal current Ith			IEC/EN	A	16
			UL/CSA	A	15
Rated operational voltage				V	480
Rated operational impulse voltage				kV	4
Maximum fuse size for short-circuit protection In (gG)			10kA	A	16
			15kA	A	10
			25kA	A	10
Rated short time current Icw			1s	A	200
Conductivity			10/5 mA/V		
Operational current Ie IEC/EN					
AC1/AC21A				A	16
AC15			110V	A	10
			220/230V	A	8
			380/400V	A	4
			660/690V	A	1.5
Rated operational power in AC					
Three-phase AC-3			220/230V	kW	2.5
			380/440V	kW	4
			500/690V	kW	5.5
Single-phase AC-3			110V	kW	0.8
			220/230V	kW	1.5
			380/440V	kW	2.2
Three-phase AC23A			220/230V	kW	3
			380/440V	kW	5.5
			500/690V	kW	7.5
Single-phase AC23A			110V	kW	0.8
			220/230V	kW	1.7
			380/440V	kW	3

Rated operational current in DC

DC21A

48V	A	12
60V	A	12
110V	A	4
220V	A	0.6
440V	A	0.25

DC23A (poles in series)

24V	A	10 (1)
48V	A	10 (2)
60V	A	10 (3)
110V	A	5 (3)
220V	A	5 (4)

DC13

24V	A	12
48V	A	10
60V	A	8
110V	A	1
220V	A	0.4
440V	A	0.15

Power dissipation

W 0.8

#### Mechanical features

Terminals screw

M3

Tightening torque for terminals max

Nm 0.5

Conductor size

AWG - Rigid cable

min	AWG	20
Max	AWG	12

AWG - Flexible cable

min	AWG	20
Max	AWG	14

Conductor size (IEC) - Flexible cable

min	mm <sup>2</sup>	0.5
Max	mm <sup>2</sup>	2.5

Conductor size (IEC) - Rigid cable

min	mm <sup>2</sup>	0.5
Max	mm <sup>2</sup>	2.5

Mechanical life

cycles 3x10<sup>6</sup>

#### UL technical data

Motor power for direct-on-line control

for three-phase motor

120V	HP	1.5
240V	HP	3

for single-phase motor

120V	HP	0.5
240V	HP	1

#### Ambient conditions

Temperature

Operating temperature

min	°C	-25
max	°C	+55

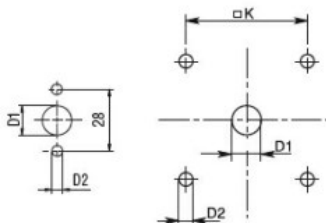
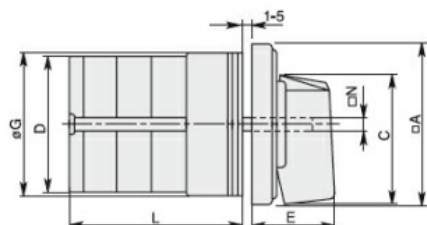
Storage temperature

min	°C	-40
max	°C	+70

## Resistance & Protection

Frontal IP degree	IP40
Terminals IP degree	IP00

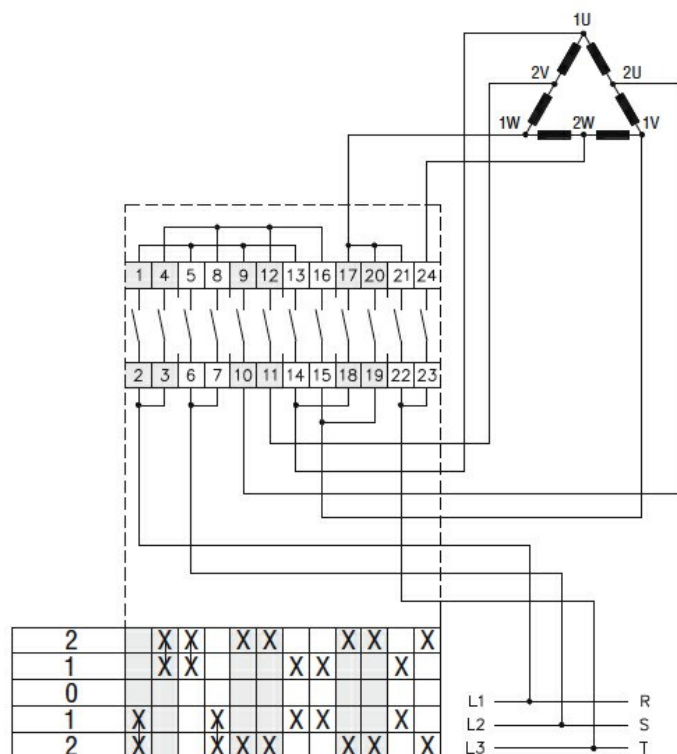
## Dimensions



Standard drillings for 7GN125.  
Drillings on request for 4 screws fixing  
(4V version).

Series	Dimensions									L Number of elements											
	□A	C	ØD	ØD1	ØD2	E	ØG	□K	□N	1	2	3	4	5	6	7	8	9	10	11	12
7GN12	48	39.5	39	12	5	26.5	38	36	6	36.1	45.8	55.5	65.2	74.9	84.6	94.3	104	113.7	123.4	133.1	142.8
7GN20	48	39.5	39	12	5	26.5	38	36	6	36.1	45.8	55.5	65.2	74.9	84.6	94.3	104	113.7	123.4	133.1	142.8
7GN25	48	39.5	43	12	5	26.5	38	36	6	40.5	54.1	67.7	81.3	94.9	108.5	122.1	135.7	147.3	162.9	176.5	190.1
7GN32	65	53	58	14	5	34.5	58.5	48	7	46.5	61.6	76.7	91.8	106.9	122	137.1	152.2	167.3	182.4	197.5	212.6
7GN40	65	53	58	14	5	34.5	58.5	48	7	46.5	61.6	76.7	91.8	106.9	122	137.1	152.2	167.3	182.4	197.5	212.6
7GN63	65	53	62	14	5	34.5	58.5	48	7	50.3	68.4	86.5	104.6	122.7	140.8	158.9	177	195.1	213.2	231.3	249.4
7GN125	90	70.5	86	16	6	41.5	84	68	9	67.3	96.4	125.5	154.6	183.7	220.3	249.4	278.5	307.6	336.7	365.8	394.9

## Wiring diagrams



## Certifications and compliance

### Compliance

CSA C22.2 n° 14

IEC/EN/BS 60947-1

IEC/EN/BS 60947-3

IEC/EN/BS 60947-5-1

UL60947-4-1

Certificates		
	cCSAus	
	EAC	
	UL	
ETIM classification		
ETIM 8.0		EC001029 - Selector switch, complete