

Product designation	Rotary cam switches		
Product type designation	7GN20		
General characteristics			
Switching diagram	84 - Multi-step 1-2-3-4-5 1 pole		
N° of elements	3		
Mounting form	U - Front mounting with black handle		
Contact characteristics			
Rated insulation voltage Ui	IEC/EN UL/CSA	V V	690 600
Rated impulse withstand voltage Uimp		kV	6
Conventional free air thermal current Ith	IEC/EN UL/CSA	A A	20 20
Rated operational voltage		V	480
Rated operational impulse voltage		kV	4
Maximum fuse size for short-circuit protection In (gG)	10kA 15kA 25kA	A A A	20 16 16
Rated short time current Icw	1 s	A	250
Conductivity	10/5 mA/V		
Operational current Ie IEC/EN			
AC1/AC21A		A	20
AC15	110V 220/230V 380/400V 660/690V	A A A A	10 8 6 1.5
Rated operational power in AC			
Three-phase AC-3	220/230V 380/440V 500/690V	kW kW kW	3 5.5 5.5
Single-phase AC-3	110V 220/230V 380/440V	kW kW kW	0.8 2.2 3
Three-phase AC23A	220/230V 380/440V 500/690V	kW kW kW	5 7.5 7.5
Single-phase AC23A	110V 220/230V 380/440V	kW kW kW	0.8 2.5 3.7
Rated operational current in DC			

### DC21A

48V	A	20
60V	A	20
110V	A	4
220V	A	0.6
440V	A	0.25

### DC23A (poles in series)

24V	A	20 (1)
48V	A	20 (2)
60V	A	20 (3)
110V	A	10 (3)
220V	A	8 (4)

### DC13

24V	A	20
48V	A	16
60V	A	12
110V	A	1
220V	A	0.4
440V	A	0.15

Power dissipation	W	0.8
-------------------	---	-----

### Mechanical features

Terminals screw	M3
-----------------	----

Tightening torque for terminals max	Nm	0.5
-------------------------------------	----	-----

### Conductor size

#### AWG - Rigid cable

min	AWG	20
Max	AWG	12

#### AWG - Flexible cable

min	AWG	20
Max	AWG	14

#### Conductor size (IEC) - Flexible cable

min	mm <sup>2</sup>	0.5
Max	mm <sup>2</sup>	2.5

#### Conductor size (IEC) - Rigid cable

min	mm <sup>2</sup>	0.5
Max	mm <sup>2</sup>	2.5

Mechanical life	cycles	5x10 <sup>6</sup>
-----------------	--------	-------------------

### UL technical data

#### Motor power for direct-on-line control

##### for three-phase motor

120V	HP	1.5
240V	HP	3
480V	HP	7.5
600V	HP	10

##### for single-phase motor

120V	HP	0.75
240V	HP	2

### Ambient conditions

#### Temperature

##### Operating temperature

min	°C	-25
max	°C	+55

##### Storage temperature

min	°C	-40
-----	----	-----

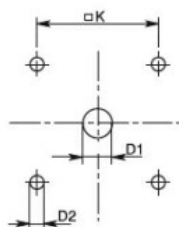
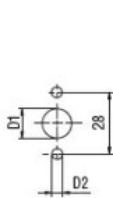
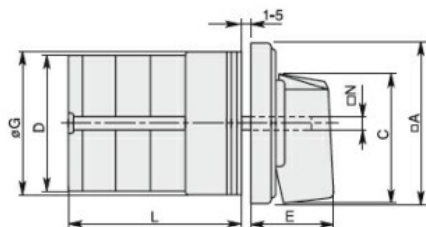
max °C +70

## Resistance & Protection

Frontal IP degree IP40

Terminals IP degree IP00

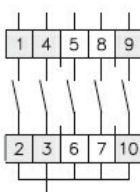
## Dimensions



Standard drillings for 7GN125.  
Drillings on request for 4 screws fixing  
(4V version).

Series	Dimensions									L    Number of elements											
	□A	C	∅D	∅D1	∅D2	E	∅G	□K	□N	1	2	3	4	5	6	7	8	9	10	11	12
7GN12	48	39.5	39	12	5	26.5	38	36	6	36.1	45.8	55.5	65.2	74.9	84.6	94.3	104	113.7	123.4	133.1	142.8
7GN20	48	39.5	39	12	5	26.5	38	36	6	36.1	45.8	55.5	65.2	74.9	84.6	94.3	104	113.7	123.4	133.1	142.8
7GN25	48	39.5	43	12	5	26.5	38	36	6	40.5	54.1	67.7	81.3	94.9	108.5	122.1	135.7	147.3	162.9	176.5	190.1
7GN32	65	53	58	14	5	34.5	58.5	48	7	46.5	61.6	76.7	91.8	106.9	122	137.1	152.2	167.3	182.4	197.5	212.6
7GN40	65	53	58	14	5	34.5	58.5	48	7	46.5	61.6	76.7	91.8	106.9	122	137.1	152.2	167.3	182.4	197.5	212.6
7GN63	65	53	62	14	5	34.5	58.5	48	7	50.3	68.4	86.5	104.6	122.7	140.8	158.9	177	195.1	213.2	231.3	249.4
7GN125	90	70.5	86	16	6	41.5	84	68	9	67.3	96.4	125.5	154.6	183.7	220.3	249.4	278.5	307.6	336.7	365.8	394.9

## Wiring diagrams



1	X			
2			X	
3				X
4		X		
5			X	

84

## Certifications and compliance

### Compliance

CSA C22.2 n° 14

IEC/EN/BS 60947-1

IEC/EN/BS 60947-3

IEC/EN/BS 60947-5-1

UL60947-4-1

### Certificates

cCSAus

EAC

UL

## ETIM classification

ETIM 8.0

EC001029 -  
Selector switch,  
complete