

Product designation			Rotary cam switches		
Product type designation			7GN63		
General characteristics					
Switching diagram			07 - ON/OFF switch 3 poles		
N° of elements			2		
Mounting form			U65 - Front mounting with red/yellow handle padlockable in 0 and protection covers		
Contact characteristics					
Rated insulation voltage Ui			IEC/EN	V	690
			UL/CSA	V	600
Rated impulse withstand voltage Uimp				kV	6
Conventional free air thermal current Ith			IEC/EN	A	63
			UL/CSA	A	60
Rated operational voltage				V	480
Rated operational impulse voltage				kV	4
Maximum fuse size for short-circuit protection In (gG)			10kA	A	63
			15kA	A	63
			25kA	A	63
			50kA	A	63
			63kA	A	63
Rated short time current Icw			1s	A	1600
Conductivity			10/5 mA/V		
Operational current Ie IEC/EN					
AC1/AC21A				A	63
AC15			110V	A	32
			220/230V	A	25
			380/400V	A	15
			660/690V	A	4
Rated operational power in AC					
Three-phase AC-3			220/230V	kW	11
			380/440V	kW	18.5
			500/690V	kW	18.5
Single-phase AC-3			110V	kW	3.7
			220/230V	kW	6.5
			380/440V	kW	11.5
Three-phase AC23A			220/230V	kW	12.5
			380/440V	kW	30
			500/690V	kW	30

Single-phase AC23A

110V	kW	3.7
220/230V	kW	7.5
380/440V	kW	12.5

Rated operational current in DC

DC21A

48V	A	63
60V	A	50
110V	A	8
220V	A	1

DC23A (poles in series)

24V	A	50 (1)
48V	A	50 (2)
60V	A	50 (3)
110V	A	25 (3)
220V	A	15 (4)

DC13

24V	A	63
48V	A	40
60V	A	28
110V	A	3.3

Power dissipation

W 3.4

Mechanical features

Terminals screw

M5

Tightening torque for terminals max

Nm 2

Conductor size

AWG - Rigid cable

min	AWG	14
Max	AWG	6

AWG - Flexible cable

min	AWG	14
Max	AWG	8

Conductor size (IEC) - Flexible cable

min	mm ²	2.5
Max	mm ²	10

Conductor size (IEC) - Rigid cable

min	mm ²	2.5
Max	mm ²	16

Mechanical life

cycles 5x10⁶

UL technical data

Motor power for direct-on-line control

for three-phase motor

120V	HP	7.5
240V	HP	15
480V	HP	25
600V	HP	25

for single-phase motor

120V	HP	3
240V	HP	10

Ambient conditions

Temperature

Operating temperature

min	°C	-25
max	°C	+55

Storage temperature

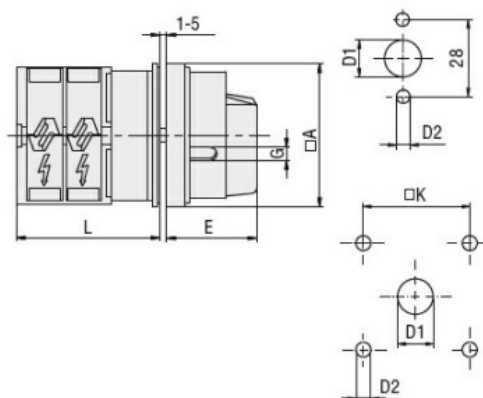
min °C -40
max °C +70

Resistance & Protection

Frontal IP degree IP40

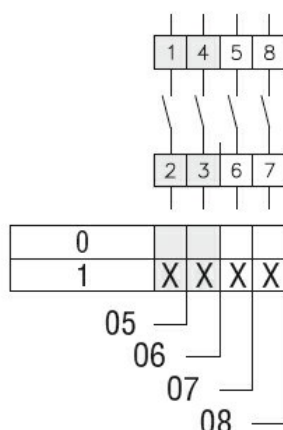
Terminals IP degree IP00

Dimensions



Series	Dimensions						L			
	□A	D1	D2	E	G	□K	1	2	3.....12	
7GN12	65	12	5	34.2	5	36	36.1	45.8	55.5	142.8
7GN20	65	12	5	34.2	5	36	36.1	45.8	55.5	142.8
7GN25	65	12	5	34.2	5	36	40.5	54.1	67.7	190.1
7GN32	65	14	5	38	6	48	46.5	61.6	76.7	212.6
7GN40	65	14	5	38	6	48	46.5	61.6	76.7	212.6
7GN63	65	14	5	38	6	48	50.3	68.4	86.5	249.4
7GN125	90	16	6	49	7	68	67.3	96.4	125.5	394.9

Wiring diagrams



Certifications and compliance

Compliance

CSA C22.2 n° 14
IEC/EN/BS 60947-1
IEC/EN/BS 60947-3
IEC/EN/BS 60947-5-1
UL60947-4-1

Certificates

cCSAus
EAC
UL

ETIM classification

ETIM 8.0

EC001029 -
Selector switch,
complete