



Product designation Power contactor  
Product type designation DPBF12

#### Contact characteristics

Number of poles	Nr.	3
Operational frequency	min	Hz 25
	max	Hz 400

#### Mechanical features

Operating position	normal allowable	Vertical plan ±30°
Fixing		Screw / DIN rail 35mm
Weight	g	362

#### Operations

Mechanical life	cycles	20000000
Electrical life	cycles	2000000

#### Safety related data

Performance level B10d according to EN/ISO 13489-1	rated load mechanical load	cycles cycles	2000000 20000000
Mirror contacts according to IEC/EN 60947-4-1			yes
EMC compatibility			yes

#### AC coil operating

Rated AC voltage at 60Hz	V	230
AC operating voltage		
of 60Hz coil powered at 60Hz pick-up	min	%Us 80
	max	%Us 110
drop-out	min	%Us 20
	max	%Us 55

AC average coil consumption at 20°C			
of 60Hz coil powered at 60Hz			
	in-rush	VA	75
	holding	VA	9
Dissipation at holding ≤20°C 50Hz		W	2.5

#### Max cycles frequency

Mechanical operation	cycles/h	3600
----------------------	----------	------

#### Operating times

Average time for Us control in AC	Closing NO	min	ms	8
--------------------------------------	------------	-----	----	---

Opening NO	max	ms	24
	min	ms	10
Closing NC	max	ms	20
	min	ms	14
Opening NC	max	ms	28
	min	ms	7
	max	ms	18

#### UL technical data

Full-load current (FLA) for three-phase AC motor

at 600V A 25

Locked rotor current (LRA)

A 150

Yielded mechanical performance

for single-phase AC motor

110/120V HP 2

230V HP 3

for three-phase AC motor

200/208V HP 5

220/230V HP 5

460/480V HP 10

575/600V HP 15

General USE

Contactor

AC current A 28

Auxiliary contacts

AC voltage V 600

AC current A 10

DC voltage V 250

DC current A 1

Short-circuit protection fuse, 600V

Standard fault

Short circuit current kA 5

Fuse rating A 80

Fuse class RK5

Contact rating of auxiliary contacts according to UL

A600 - P600

#### Ambient conditions

Temperature

Operating temperature

min °C -50

max °C 70

Storage temperature

min °C -60

max °C 80

Max altitude

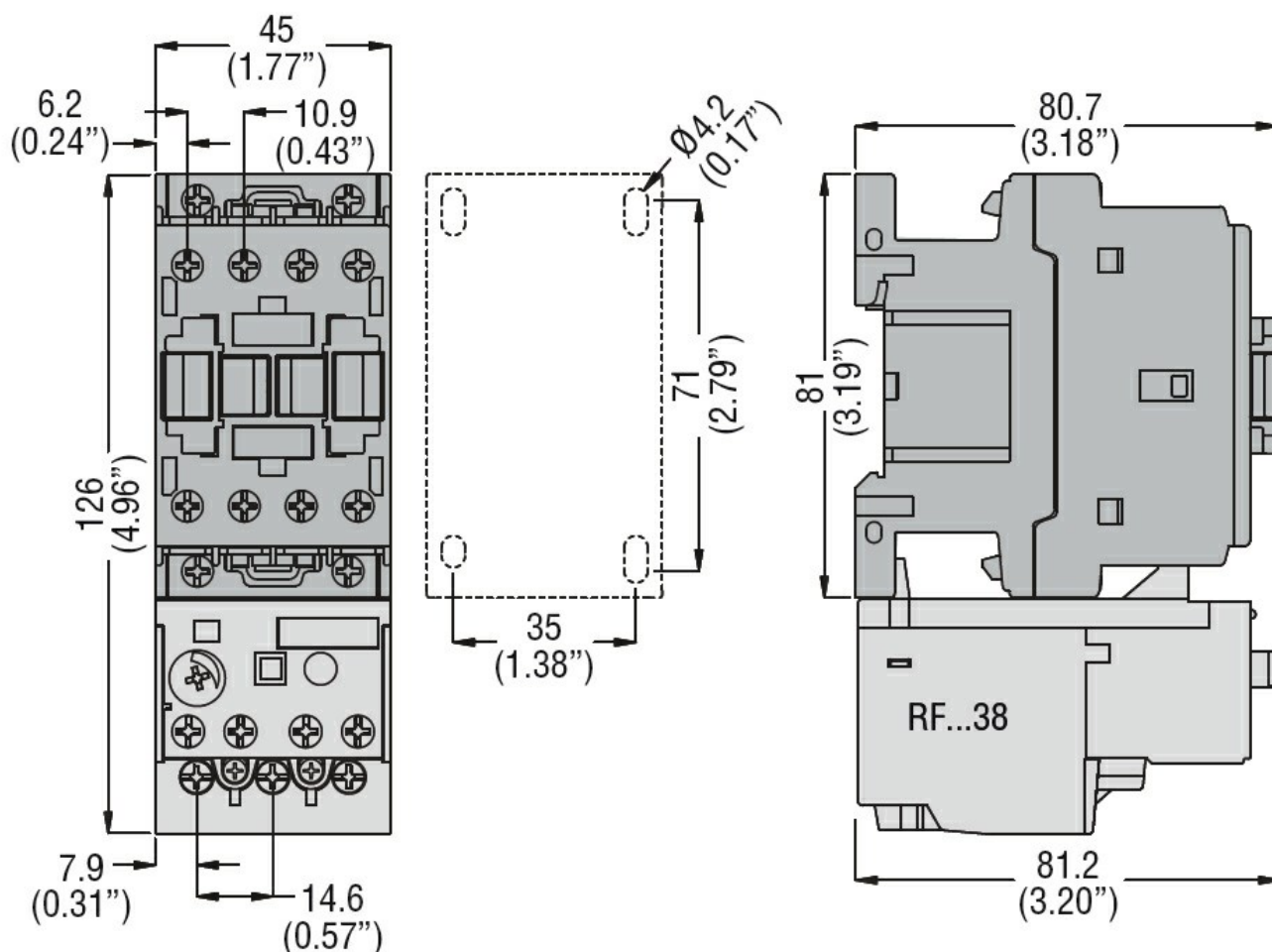
m 3000

#### Resistance & Protection

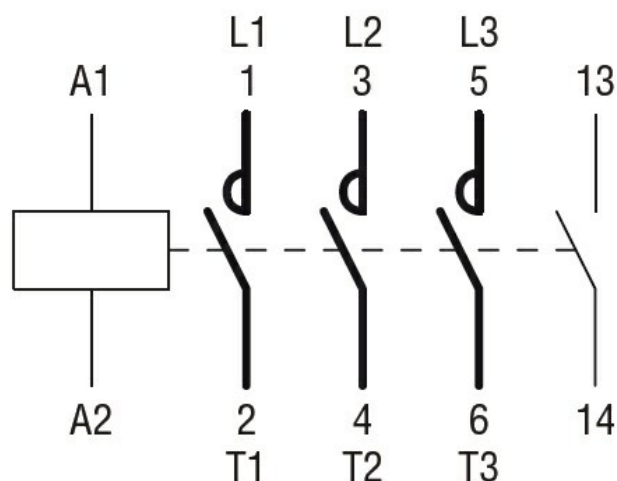
Pollution degree

3

#### Dimensions



## Wiring diagrams



## Certifications and compliance

### Compliance

CSA C22.2 n° 60947-1

CSA C22.2 n° 60947-4-24

UL 60947-1

UL 60947-4-1

### Certificates

cULus

## ETIM classification

ETIM 8.0

EC000066 -  
Power contactor,  
AC switching