



Product designation	Power contactor
Product type designation	DPBF18

Contact characteristics

Number of poles	Nr.	4
Operational frequency	min	Hz 25
	max	Hz 400

Mechanical features

Operating position	normal allowable	Vertical plan ±30°
Fixing		Screw / DIN rail 35mm
Weight	g	355

Operations

Mechanical life	cycles	20000000
Electrical life	cycles	1600000

Safety related data

Performance level B10d according to EN/ISO 13489-1	rated load mechanical load	cycles cycles	1600000 20000000
Mirror contacts according to IEC/EN 60947-4-1			yes
EMC compatibility			yes

AC coil operating

Rated AC voltage at 50/60Hz	V	240
Rated AC voltage at 60Hz	V	230

AC operating voltage			
of 50/60Hz coil powered at 50Hz			
pick-up	min	%Us	80
	max	%Us	110
drop-out	min	%Us	20
	max	%Us	55
of 50/60Hz coil powered at 60Hz			
pick-up	min	%Us	85
	max	%Us	110
drop-out	min	%Us	20
	max	%Us	55
of 60Hz coil powered at 60Hz			
pick-up	min	%Us	80
	max	%Us	110
drop-out			

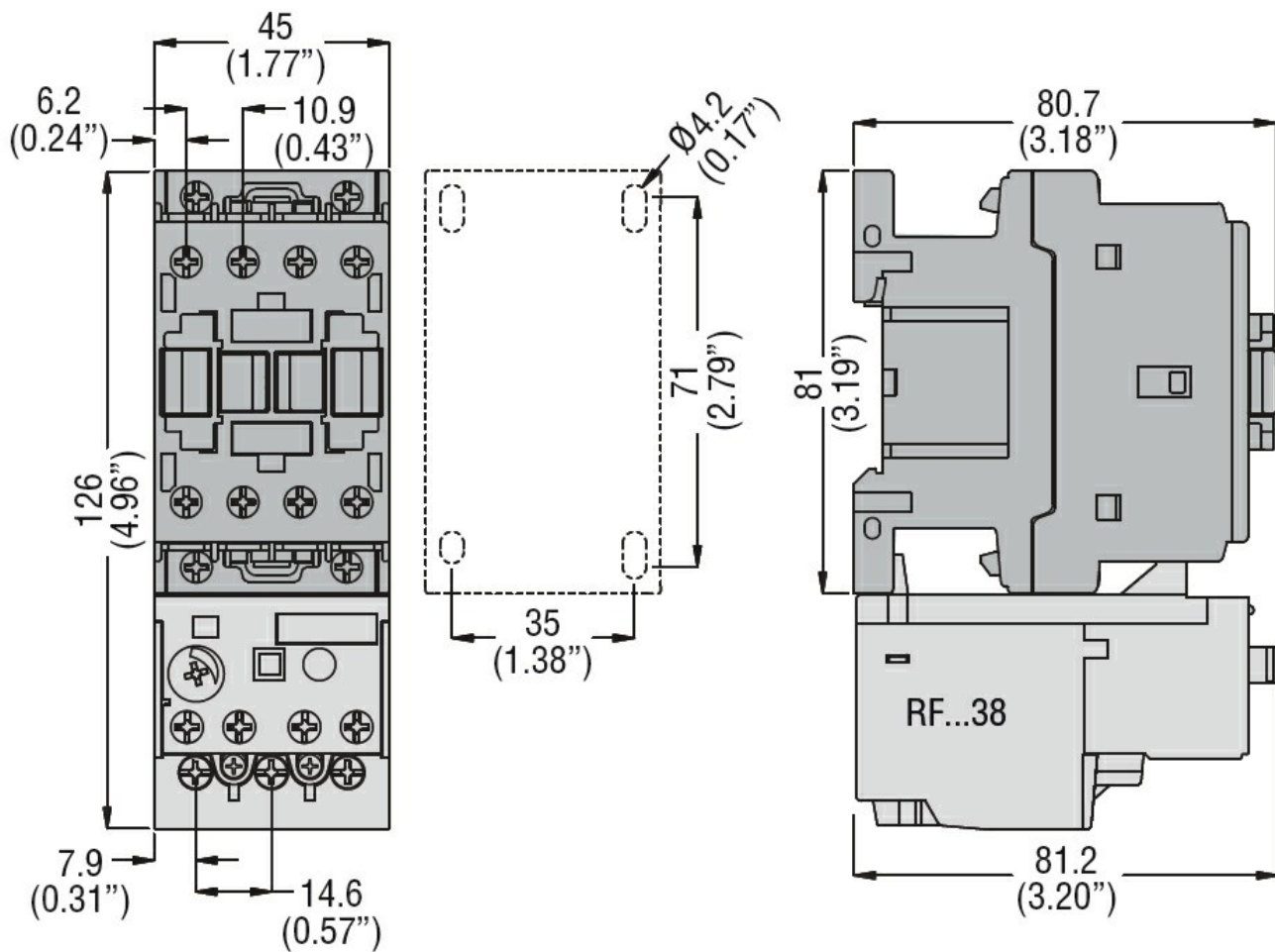
		min	%Us	20
		max	%Us	55
AC average coil consumption at 20°C				
of 50/60Hz coil powered at 50Hz				
	in-rush	VA		75
	holding	VA		9
of 50/60Hz coil powered at 60Hz				
	in-rush	VA		70
	holding	VA		6.5
of 60Hz coil powered at 60Hz				
	in-rush	VA		75
	holding	VA		9
Dissipation at holding ≤20°C 50Hz			W	2.5
Max cycles frequency				
Mechanical operation			cycles/h	3600
Operating times				
Average time for Us control				
in AC				
Closing NO				
	min	ms		8
	max	ms		24
Opening NO				
	min	ms		10
	max	ms		20
Closing NC				
	min	ms		14
	max	ms		28
Opening NC				
	min	ms		7
	max	ms		18
UL technical data				
Full-load current (FLA) for three-phase AC motor				
	at 600V	A		30
Locked rotor current (LRA)			A	180
Yielded mechanical performance				
for single-phase AC motor				
	110/120V	HP		2
	230V	HP		5
for three-phase AC motor				
	200/208V	HP		7.5
	220/230V	HP		7.5
	460/480V	HP		15
	575/600V	HP		20
General USE				
Contactor				
	AC current	A		32
Short-circuit protection fuse, 600V				
Standard fault				
	Short circuit current	kA		5
	Fuse rating	A		100
	Fuse class			RK5
Ambient conditions				
Temperature				
Operating temperature				

Storage temperature	min	°C	-50
	max	°C	70
Max altitude	min	°C	-60
	max	°C	80
	m		3000

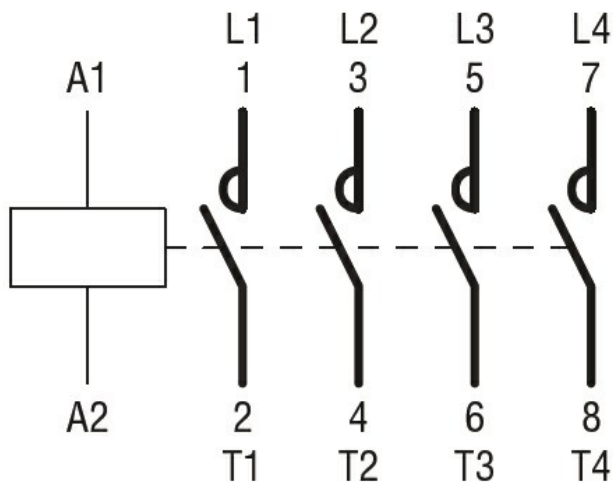
Resistance & Protection

Pollution degree	3
------------------	---

Dimensions



Wiring diagrams



Certifications and compliance

Compliance

CSA C22.2 n° 60947-1
CSA C22.2 n° 60947-4-42
UL 60947-1
UL 60947-4-1

Certificates

cULus

ETIM classification

ETIM 8.0

EC000066 -
Power contactor,
AC switching