



Product designation			Power contactor		
Product type designation			DPBF26		
Contact characteristics					
Number of poles			Nr.	4	
Operational frequency			min	Hz	25
			max	Hz	400
Mechanical features					
Operating position			normal allowable	Vertical plan ±30°	
Fixing			Screw / DIN rail 35mm		
Weight			g	508	
Operations					
Mechanical life			cycles	20000000	
Electrical life			cycles	1600000	
Safety related data					
Performance level B10d according to EN/ISO 13489-1			rated load	cycles	1600000
			mechanical load	cycles	20000000
Mirror contats according to IEC/EN 609474-4-1			yes		
EMC compatibility			yes		
AC coil operating					
Rated AC voltage at 60Hz			V	24	
AC operating voltage					
of 50/60Hz coil powered at 50Hz drop-out			max	%Us	0
of 60Hz coil powered at 60Hz pick-up			min	%Us	80
drop-out			max	%Us	110
			min	%Us	20
			max	%Us	55
AC average coil consumption at 20°C					
of 60Hz coil powered at 60Hz			in-rush	VA	75
			holding	VA	9
Dissipation at holding ≤20°C 50Hz			W	2.5	
Max cycles frequency					
Mechanical operation			cycles/h	3600	
Operating times					
Average time for Us control					

in AC

Closing NO	min	ms	8
	max	ms	24
Opening NO	min	ms	5
	max	ms	15
Closing NC	min	ms	9
	max	ms	20
Opening NC	min	ms	9
	max	ms	17

#### UL technical data

Full-load current (FLA) for three-phase AC motor

at 600V A 40

Locked rotor current (LRA)

A 240

Yielded mechanical performance

for single-phase AC motor

110/120V HP 3  
230V HP 7.5

for three-phase AC motor

200/208V HP 10  
220/230V HP 10  
460/480V HP 30  
575/600V HP 30

General USE

Contactor

AC current A 45

Short-circuit protection fuse, 600V

Standard fault

Short circuit current kA 5  
Fuse rating A 125  
Fuse class RK5

#### Ambient conditions

Temperature

Operating temperature

min °C -50  
max °C 70

Storage temperature

min °C -60  
max °C 80

Max altitude

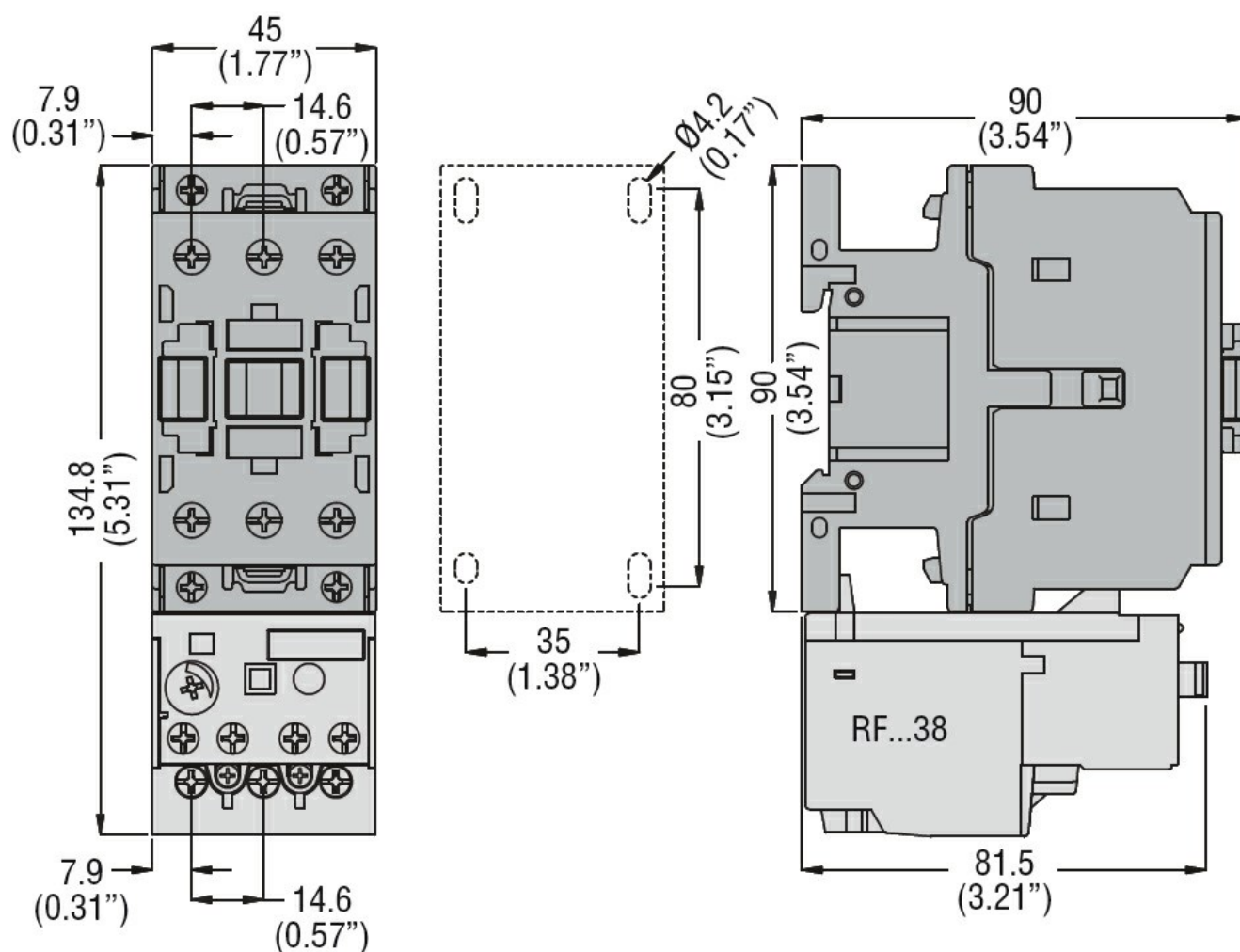
m 3000

#### Resistance & Protection

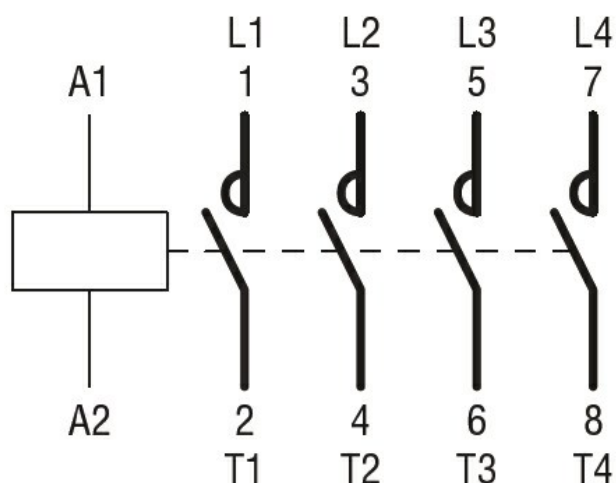
Pollution degree

3

#### Dimensions



## Wiring diagrams



## Certifications and compliance

### Compliance

CSA C22.2 n° 60947-1  
CSA C22.2 n° 60947-4-49  
UL 60947-1  
UL 60947-4-1

### Certificates

cULus

ETIM classification

ETIM 8.0

EC000066 -  
Power contactor,  
AC switching