

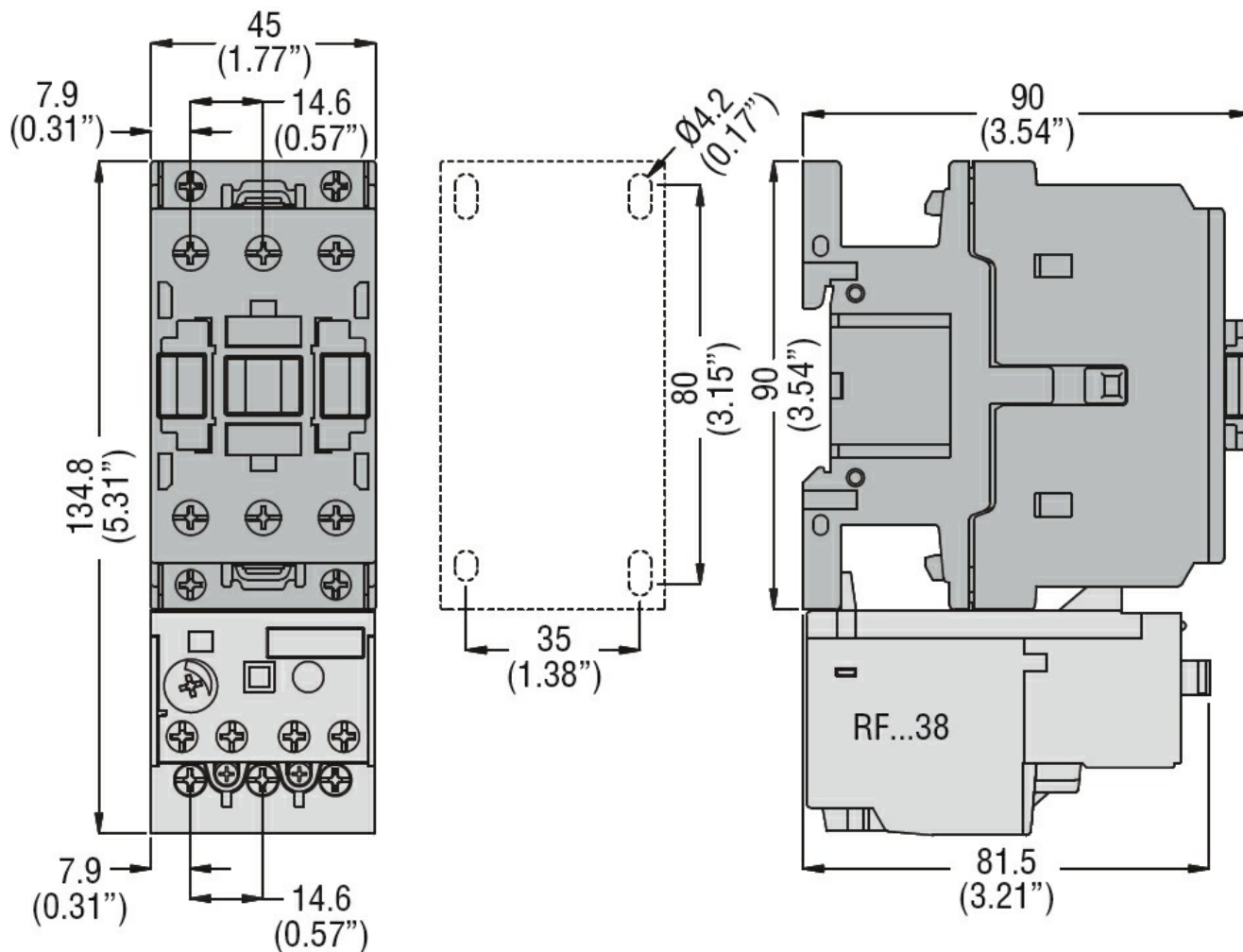
Product designation			Power contactor		
Product type designation			DPBF32		
Contact characteristics					
Number of poles			Nr.	3	
Operational frequency			min	Hz	25
			max	Hz	400
Mechanical features					
Operating position			normal allowable	Vertical plan ±30°	
Fixing			Screw / DIN rail 35mm		
Weight			g	432	
Operations					
Mechanical life			cycles	20000000	
Electrical life			cycles	1600000	
Safety related data					
Performance level B10d according to EN/ISO 13489-1			rated load	cycles	1600000
			mechanical load	cycles	20000000
Mirror contats according to IEC/EN 609474-4-1			yes		
EMC compatibility			yes		
AC coil operating					
Rated AC voltage at 50/60Hz			V	24	
Rated AC voltage at 60Hz			V	575	
AC operating voltage					
of 50/60Hz coil powered at 50Hz pick-up			min	%Us	80
			max	%Us	110
drop-out			min	%Us	20
			max	%Us	55
of 50/60Hz coil powered at 60Hz pick-up			min	%Us	85
			max	%Us	110
drop-out			min	%Us	20
			max	%Us	55
of 60Hz coil powered at 60Hz pick-up			min	%Us	80
			max	%Us	110
drop-out			min	%Us	20
			max	%Us	55
AC average coil consumption at 20°C					
of 50/60Hz coil powered at 50Hz			in-rush	VA	75
			holding	VA	9
of 50/60Hz coil powered at 60Hz					

		in-rush	VA	70
		holding	VA	6.5
of 60Hz coil powered at 60Hz				
		in-rush	VA	75
		holding	VA	9
Dissipation at holding ≤20°C 50Hz		W		2.5
Max cycles frequency				
Mechanical operation			cycles/h	3600
Operating times				
Average time for Us control				
in AC				
		Closing NO		
		min	ms	8
		max	ms	24
		Opening NO		
		min	ms	5
		max	ms	15
		Closing NC		
		min	ms	9
		max	ms	20
		Opening NC		
		min	ms	9
		max	ms	17
UL technical data				
Full-load current (FLA) for three-phase AC motor		at 600V	A	50
Locked rotor current (LRA)			A	300
Yielded mechanical performance				
for single-phase AC motor		110/120V	HP	3
		230V	HP	10
for three-phase AC motor		200/208V	HP	15
		220/230V	HP	15
		460/480V	HP	30
		575/600V	HP	40
General USE				
Contactor		AC current	A	55
Short-circuit protection fuse, 600V				
Standard fault		Short circuit current	kA	5
		Fuse rating	A	125
		Fuse class		RK5
Ambient conditions				
Temperature				
Operating temperature		min	°C	-50
		max	°C	70
Storage temperature		min	°C	-60
		max	°C	80
Max altitude			m	3000
Resistance & Protection				

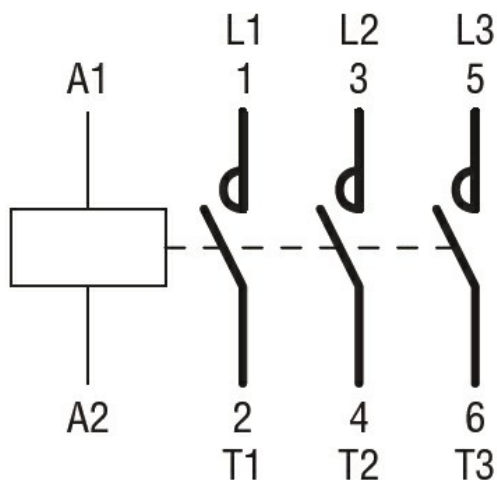
Pollution degree

3

Dimensions



Wiring diagrams



Certifications and compliance

Compliance

CSA C22.2 n° 60947-1

CSA C22.2 n° 60947-4-53

UL 60947-1

UL 60947-4-1

Certificates

cULus

ETIM classification

ETIM 8.0

EC000066 -
Power contactor,
AC switching