

| | | | | |
|---|---|---------------------|--------------------------|-----------|
| Product designation | | | Power contactor | |
| Product type designation | | | DPBF32 | |
| Contact characteristics | | | | |
| Number of poles | | Nr. | 3 | |
| Operational frequency | | | | |
| | min | Hz | 25 | |
| | max | Hz | 400 | |
| Mechanical features | | | | |
| Operating position | | normal allowable | Vertical plan ±30° | |
| Fixing | | | Screw / DIN rail 35mm | |
| Weight | | g | 422 | |
| Operations | | | | |
| Mechanical life | | cycles | 20000000 | |
| Electrical life | | cycles | 1600000 | |
| Safety related data | | | | |
| Performance level B10d according to EN/ISO 13489-1 | | | | |
| | rated load mechanical load | cycles cycles | 1600000 20000000 | |
| Mirror contats according to IEC/EN 609474-4-1 | | | yes | |
| EMC compatibility | | | yes | |
| AC coil operating | | | | |
| Rated AC voltage at 60Hz | | V | 230 | |
| AC operating voltage | | | | |
| | of 60Hz coil powered at 60Hz pick-up | min max | %Us %Us | 80 110 |
| | drop-out | min max | %Us %Us | 20 55 |
| AC average coil consumption at 20°C of 60Hz coil powered at 60Hz | | in-rush holding | VA VA | 75 9 |
| Dissipation at holding ≤20°C 50Hz | | W | 2.5 | |
| Max cycles frequency | | | | |
| Mechanical operation | | cycles/h | 3600 | |
| Operating times | | | | |
| Average time for Us control in AC | | | | |
| | Closing NO | min max | ms ms | 8 24 |
| | Opening NO | min max | ms ms | 5 15 |
| | Closing NC | min max | ms ms | 9 20 |
| | Opening NC | | | |

| | | |
|-----|----|----|
| min | ms | 9 |
| max | ms | 17 |

UL technical data

Full-load current (FLA) for three-phase AC motor

| | | |
|---------|---|----|
| at 600V | A | 50 |
|---------|---|----|

Locked rotor current (LRA)

| | |
|---|-----|
| A | 300 |
|---|-----|

Yielded mechanical performance

for single-phase AC motor

| | | |
|----------|----|----|
| 110/120V | HP | 3 |
| 230V | HP | 10 |

for three-phase AC motor

| | | |
|----------|----|----|
| 200/208V | HP | 15 |
| 220/230V | HP | 15 |
| 460/480V | HP | 30 |
| 575/600V | HP | 40 |

General USE

Contactor

| | | |
|------------|---|----|
| AC current | A | 55 |
|------------|---|----|

Short-circuit protection fuse, 600V

Standard fault

| | | |
|-----------------------|----|-----|
| Short circuit current | kA | 5 |
| Fuse rating | A | 150 |
| Fuse class | | RK5 |

Ambient conditions

Temperature

Operating temperature

| | | |
|-----|----|-----|
| min | °C | -50 |
| max | °C | 70 |

Storage temperature

| | | |
|-----|----|-----|
| min | °C | -60 |
| max | °C | 80 |

Max altitude

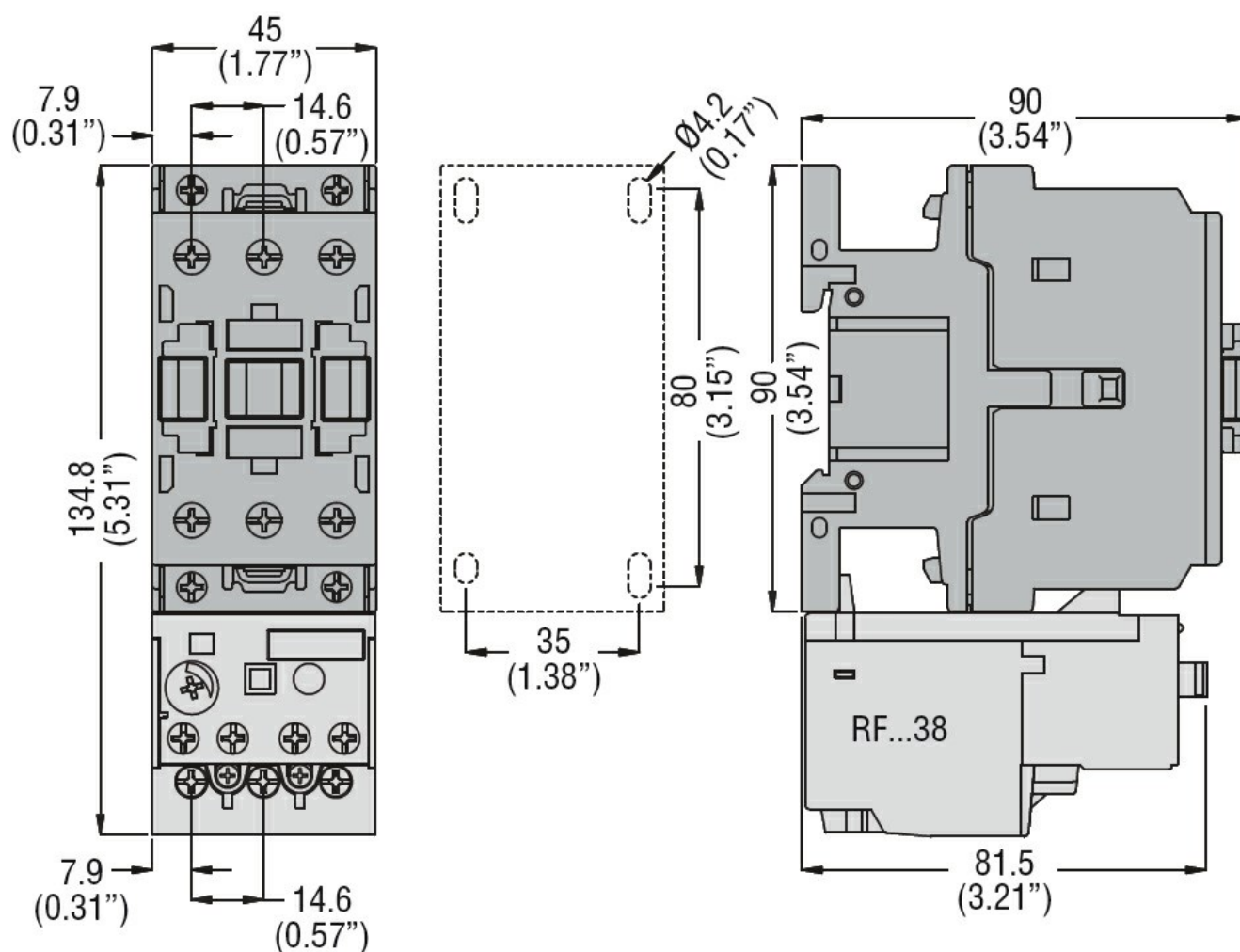
| | |
|---|------|
| m | 3000 |
|---|------|

Resistance & Protection

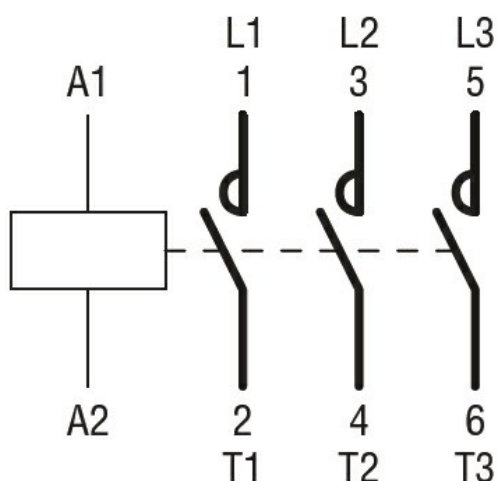
Pollution degree

3

Dimensions



Wiring diagrams



Certifications and compliance

Compliance

CSA C22.2 n° 60947-1
CSA C22.2 n° 60947-4-56
UL 60947-1
UL 60947-4-1

Certificates

cULus

ETIM classification

ETIM 8.0

EC000066 -
Power contactor,
AC switching