

Product designation			Power contactor		
Product type designation			DPBF32		
Contact characteristics					
Number of poles		Nr.	3		
Operational frequency		min	Hz	25	
		max	Hz	400	
Mechanical features					
Operating position		normal	Vertical plan		
		allowable	±30°		
Fixing		Screw / DIN rail			
		35mm			
Weight		g	414		
Operations					
Mechanical life		cycles	20000000		
Electrical life		cycles	1600000		
Safety related data					
Performance level B10d according to EN/ISO 13489-1		rated load	cycles	1600000	
		mechanical load	cycles	20000000	
Mirror contats according to IEC/EN 609474-4-1		yes			
EMC compatibility		yes			
AC coil operating					
Rated AC voltage at 60Hz		V	575		
AC operating voltage		of 60Hz coil powered at 60Hz			
		pick-up	min	%Us	80
			max	%Us	110
		drop-out	min	%Us	20
			max	%Us	55
AC average coil consumption at 20°C		of 60Hz coil powered at 60Hz			
		in-rush	VA	75	
		holding	VA	9	
Dissipation at holding ≤20°C 50Hz		W	2.5		
Max cycles frequency					
Mechanical operation		cycles/h	3600		
Operating times					
Average time for Us control		in AC			
		Closing NO	min	ms	8
			max	ms	24
		Opening NO	min	ms	5
			max	ms	15
		Closing NC	min	ms	9
			max	ms	20
		Opening NC			

min	ms	9
max	ms	17

#### UL technical data

Full-load current (FLA) for three-phase AC motor

at 600V	A	50
---------	---	----

Locked rotor current (LRA)

A	300
---	-----

Yielded mechanical performance

for single-phase AC motor

110/120V	HP	3
230V	HP	10

for three-phase AC motor

200/208V	HP	15
220/230V	HP	15
460/480V	HP	30
575/600V	HP	40

General USE

Contactor

AC current	A	55
------------	---	----

Short-circuit protection fuse, 600V

Standard fault

Short circuit current	kA	5
Fuse rating	A	150
Fuse class		RK5

#### Ambient conditions

Temperature

Operating temperature

min	°C	-50
max	°C	70

Storage temperature

min	°C	-60
max	°C	80

Max altitude

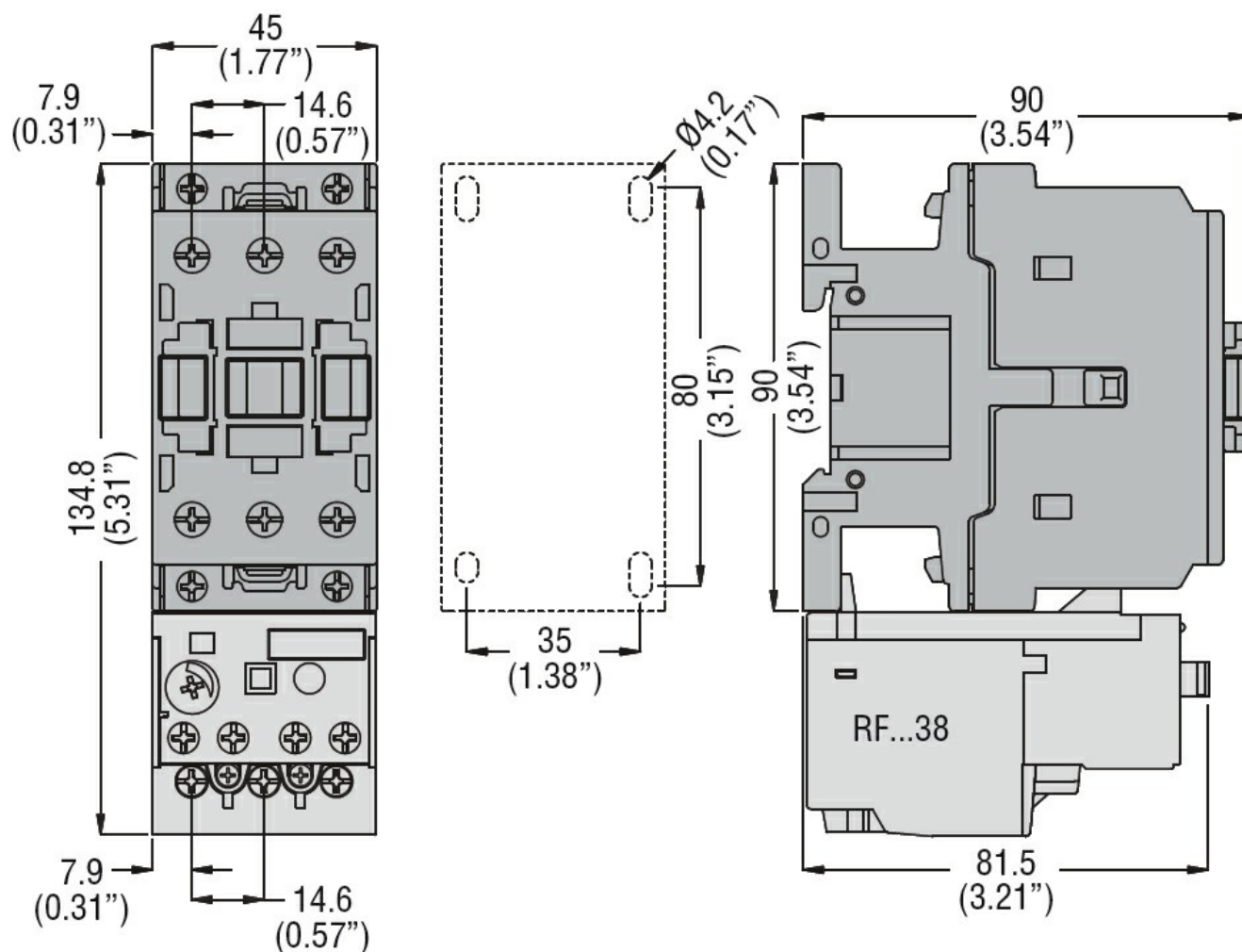
m	3000
---	------

#### Resistance & Protection

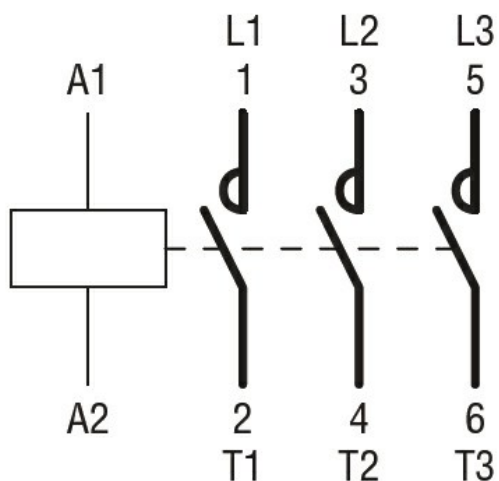
Pollution degree

3

#### Dimensions



### Wiring diagrams



### Certifications and compliance

#### Compliance

CSA C22.2 n° 60947-1  
CSA C22.2 n° 60947-4-58  
UL 60947-1  
UL 60947-4-1

#### Certificates

cULus

ETIM classification

ETIM 8.0

EC000066 -  
Power contactor,  
AC switching