

Product designation			Power contactor		
Product type designation			DPBF50		
Contact characteristics					
Number of poles			Nr.	3	
Operational frequency			min	Hz	25
			max	Hz	400
Mechanical features					
Operating position			normal allowable	Vertical plan ±30°	
Fixing			Screw / DIN rail 35mm		
Weight			g	1020	
Operations					
Mechanical life			cycles	15000000	
Electrical life			cycles	1400000	
Safety related data					
Performance level B10d according to EN/ISO 13489-1			rated load	cycles	1400000
			mechanical load	cycles	15000000
Mirror contats according to IEC/EN 609474-4-1			yes		
EMC compatibility			yes		
AC coil operating					
Rated AC voltage at 50/60Hz			V	24	
Rated AC voltage at 60Hz			V	24	
AC operating voltage					
of 50/60Hz coil powered at 50Hz pick-up			min	%Us	75
			max	%Us	115
drop-out			min	%Us	20
			max	%Us	55
of 50/60Hz coil powered at 60Hz pick-up			min	%Us	80
			max	%Us	115
drop-out			min	%Us	20
			max	%Us	55
of 60Hz coil powered at 60Hz pick-up			min	%Us	80
			max	%Us	110
drop-out			min	%Us	20
			max	%Us	55
AC average coil consumption at 20°C					
of 50/60Hz coil powered at 50Hz			in-rush	VA	30
			holding	VA	4
of 50/60Hz coil powered at 60Hz					

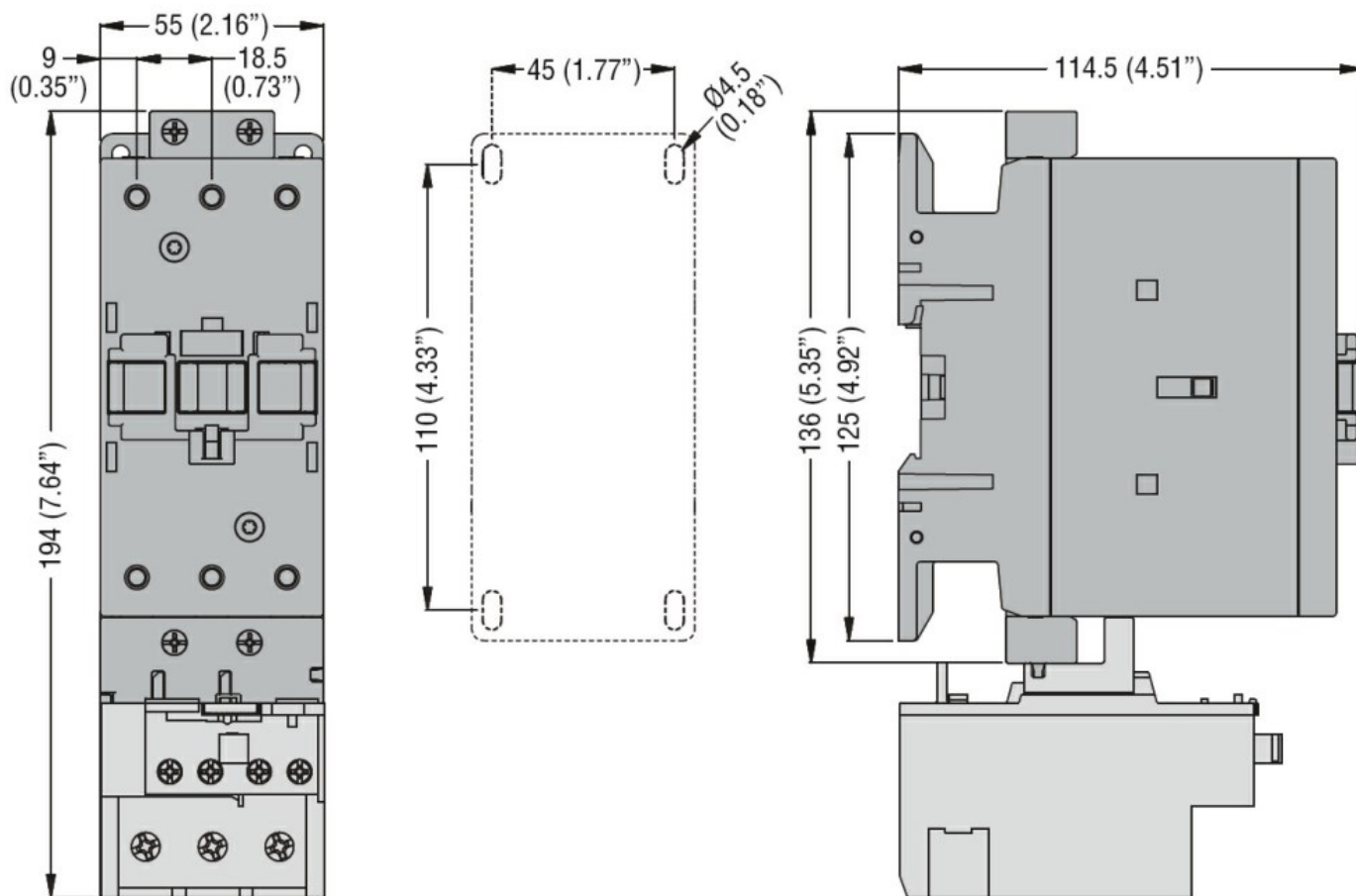
		in-rush	VA	25
		holding	VA	3
of 60Hz coil powered at 60Hz				
		in-rush	VA	210
		holding	VA	15
Dissipation at holding ≤20°C 50Hz		W		5
Max cycles frequency				
Mechanical operation			cycles/h	3600
Operating times				
Average time for Us control				
in AC				
		Closing NO		
		min	ms	12
		max	ms	28
		Opening NO		
		min	ms	8
		max	ms	22
		Closing NC		
		min	ms	0
		max	ms	0
		Opening NC		
		min	ms	0
in DC				
		Closing NO		
		min	ms	40
		max	ms	85
		Opening NO		
		min	ms	20
		max	ms	55
UL technical data				
Full-load current (FLA) for three-phase AC motor				
		at 600V	A	70
Locked rotor current (LRA)			A	420
General USE				
Contactor				
		AC current	A	90
Short-circuit protection fuse, 600V				
High fault				
		Short circuit current	kA	100
		Fuse rating	A	150
		Fuse class		J
Standard fault				
		Short circuit current	kA	5
		Fuse rating	A	150
		Fuse class		RK5
Ambient conditions				
Temperature				
Operating temperature				
		min	°C	-50
		max	°C	70
Storage temperature				
		min	°C	-60
		max	°C	80
Max altitude			m	3000

Resistance & Protection

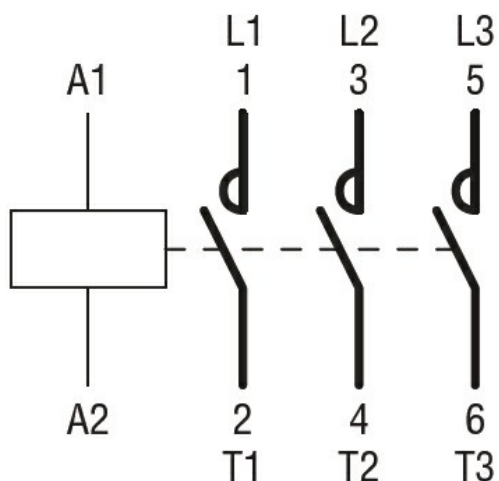
Pollution degree

3

Dimensions



Wiring diagrams



Certifications and compliance

Compliance

CSA C22.2 n° 60947-1
CSA C22.2 n° 60947-4-60
UL 60947-1
UL 60947-4-1

Certificates

cULus

ETIM classification

ETIM 8.0

EC000066 -
Power contactor,
AC switching