

| | | | | | |
|--|--|---------------------------------|--------------------|----------|-----|
| Product designation | | | Power contactor | | |
| Product type designation | | | DPBF50 | | |
| Contact characteristics | | | | | |
| Number of poles | | Nr. | 3 | | |
| Operational frequency | | min | Hz | 25 | |
| | | max | Hz | 400 | |
| Mechanical features | | | | | |
| Operating position | | normal allowable | Vertical plan ±30° | | |
| Fixing | | Screw / DIN rail 35mm | | | |
| Weight | | g | 1020 | | |
| Operations | | | | | |
| Mechanical life | | cycles | 15000000 | | |
| Electrical life | | cycles | 1400000 | | |
| Safety related data | | | | | |
| Performance level B10d according to EN/ISO 13489-1 | | rated load mechanical load | cycles | 1400000 | |
| | | | cycles | 15000000 | |
| Mirror contats according to IEC/EN 609474-4-1 | | yes | | | |
| EMC compatibility | | yes | | | |
| AC coil operating | | | | | |
| Rated AC voltage at 60Hz | | V | 120 | | |
| AC operating voltage | | of 60Hz coil powered at 60Hz | | | |
| | | pick-up | min | %Us | 80 |
| | | | max | %Us | 110 |
| | | drop-out | min | %Us | 20 |
| | | | max | %Us | 55 |
| AC average coil consumption at 20°C | | of 50/60Hz coil powered at 50Hz | | | |
| | | in-rush holding | VA | 30 | |
| | | | VA | 4 | |
| | | of 50/60Hz coil powered at 60Hz | | | |
| | | in-rush holding | VA | 25 | |
| | | | VA | 3 | |
| | | of 60Hz coil powered at 60Hz | | | |
| | | in-rush holding | VA | 210 | |
| | | | VA | 15 | |
| Dissipation at holding ≤20°C 50Hz | | W | 5 | | |
| Max cycles frequency | | | | | |
| Mechanical operation | | cycles/h | 3600 | | |
| Operating times | | | | | |
| Average time for Us control in AC | | Closing NO | min | ms | 12 |
| | | | max | ms | 28 |
| | | Opening NO | | | |

| | | | | |
|-------|------------|-----|----|----|
| in DC | Closing NC | min | ms | 8 |
| | | max | ms | 22 |
| | Opening NC | min | ms | 0 |
| | | max | ms | 0 |
| | Closing NO | min | ms | 40 |
| | | max | ms | 85 |
| | Opening NO | min | ms | 20 |
| | | max | ms | 55 |

UL technical data

Full-load current (FLA) for three-phase AC motor

at 600V A 70

Locked rotor current (LRA)

A 420

General USE

Contactor

AC current A 90

Short-circuit protection fuse, 600V

High fault

Short circuit current kA 100
Fuse rating A 150
Fuse class J

Standard fault

Short circuit current kA 5
Fuse rating A 150
Fuse class RK5

Ambient conditions

Temperature

Operating temperature

min °C -50
max °C 70

Storage temperature

min °C -60
max °C 80

Max altitude

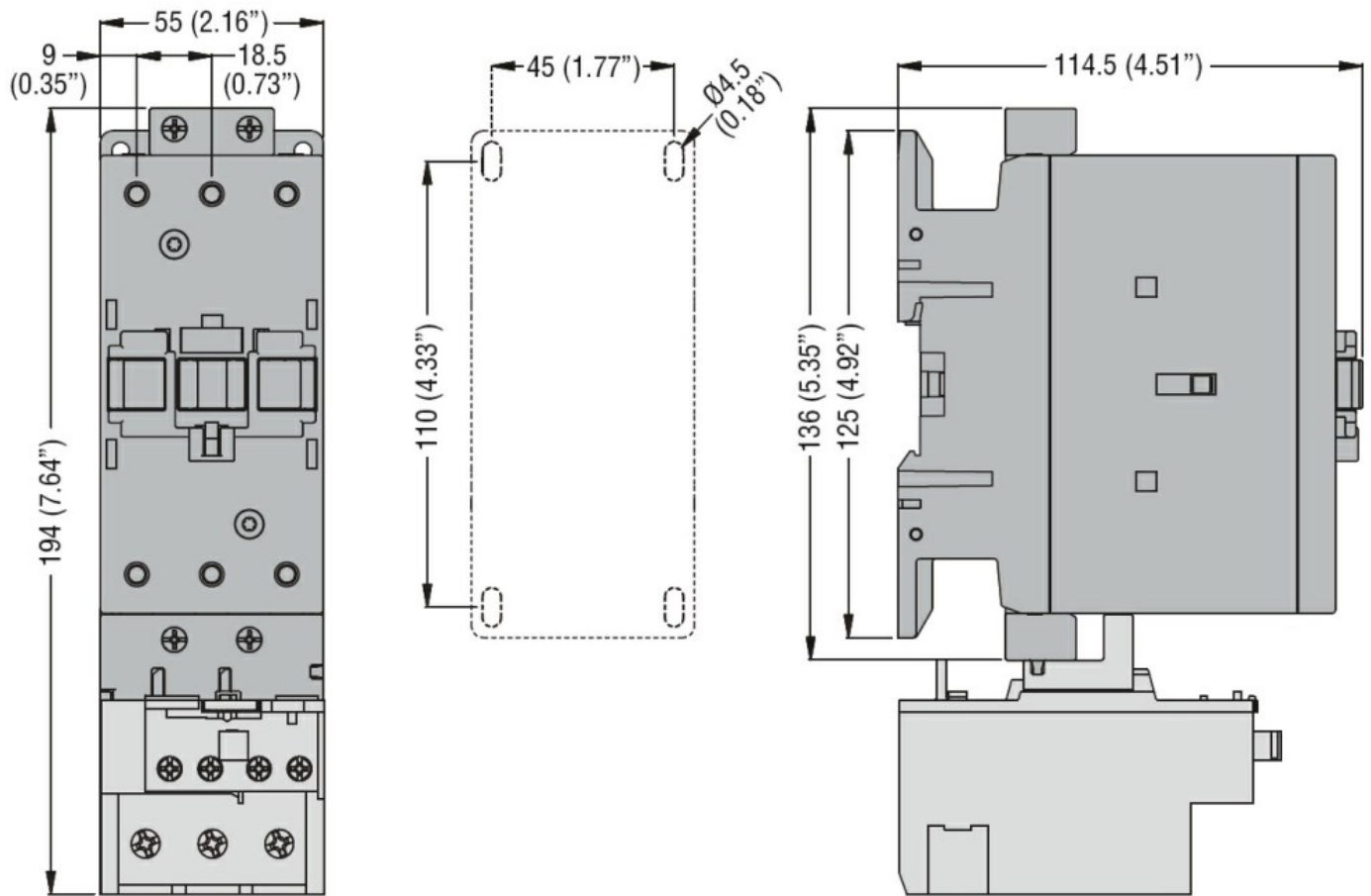
m 3000

Resistance & Protection

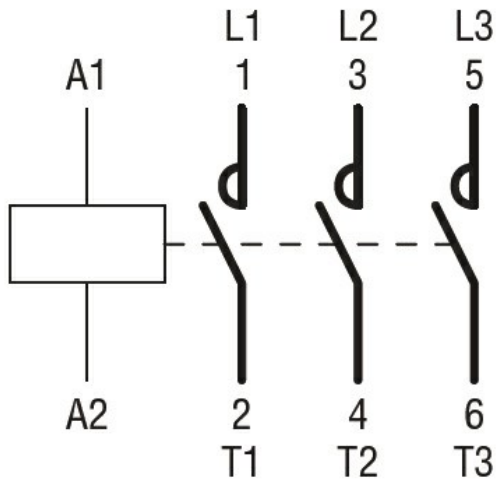
Pollution degree

3

Dimensions



Wiring diagrams



Certifications and compliance

Compliance

CSA C22.2 n° 60947-1
CSA C22.2 n° 60947-4-61
UL 60947-1
UL 60947-4-1

Certificates

cULus

ETIM classification

ETIM 8.0

EC000066 -
Power contactor,
AC switching