

Product designation			Power contactor		
Product type designation			DPBF50		
Contact characteristics					
Number of poles		Nr.	3		
Operational frequency		min	Hz	25	
		max	Hz	400	
Mechanical features					
Operating position		normal allowable	Vertical plan ±30°		
Fixing		Screw / DIN rail 35mm			
Weight		g	1020		
Operations					
Mechanical life		cycles	15000000		
Electrical life		cycles	1400000		
Safety related data					
Performance level B10d according to EN/ISO 13489-1		rated load mechanical load	cycles	1400000	
			cycles	15000000	
Mirror contats according to IEC/EN 609474-4-1		yes			
EMC compatibility		yes			
AC coil operating					
Rated AC voltage at 60Hz		V	230		
AC operating voltage		of 60Hz coil powered at 60Hz			
		pick-up	min	%Us	80
			max	%Us	110
		drop-out	min	%Us	20
			max	%Us	55
AC average coil consumption at 20°C		of 50/60Hz coil powered at 50Hz			
		in-rush	VA	30	
		holding	VA	4	
		of 50/60Hz coil powered at 60Hz			
		in-rush	VA	25	
		holding	VA	3	
		of 60Hz coil powered at 60Hz			
		in-rush	VA	210	
		holding	VA	15	
Dissipation at holding ≤20°C 50Hz		W	5		
Max cycles frequency					
Mechanical operation		cycles/h	3600		
Operating times					
Average time for Us control in AC		Closing NO	min	ms	12
			max	ms	28
		Opening NO			

in DC	Closing NC	min	ms	8
		max	ms	22
	Opening NC	min	ms	0
		max	ms	0
	Closing NO	min	ms	40
		max	ms	85
	Opening NO	min	ms	20
		max	ms	55

UL technical data

Full-load current (FLA) for three-phase AC motor

at 600V A 70

Locked rotor current (LRA)

A 420

General USE

Contactor

AC current A 90

Short-circuit protection fuse, 600V

High fault

Short circuit current kA 100
Fuse rating A 150
Fuse class J

Standard fault

Short circuit current kA 5
Fuse rating A 150
Fuse class RK5

Ambient conditions

Temperature

Operating temperature

min °C -50
max °C 70

Storage temperature

min °C -60
max °C 80

Max altitude

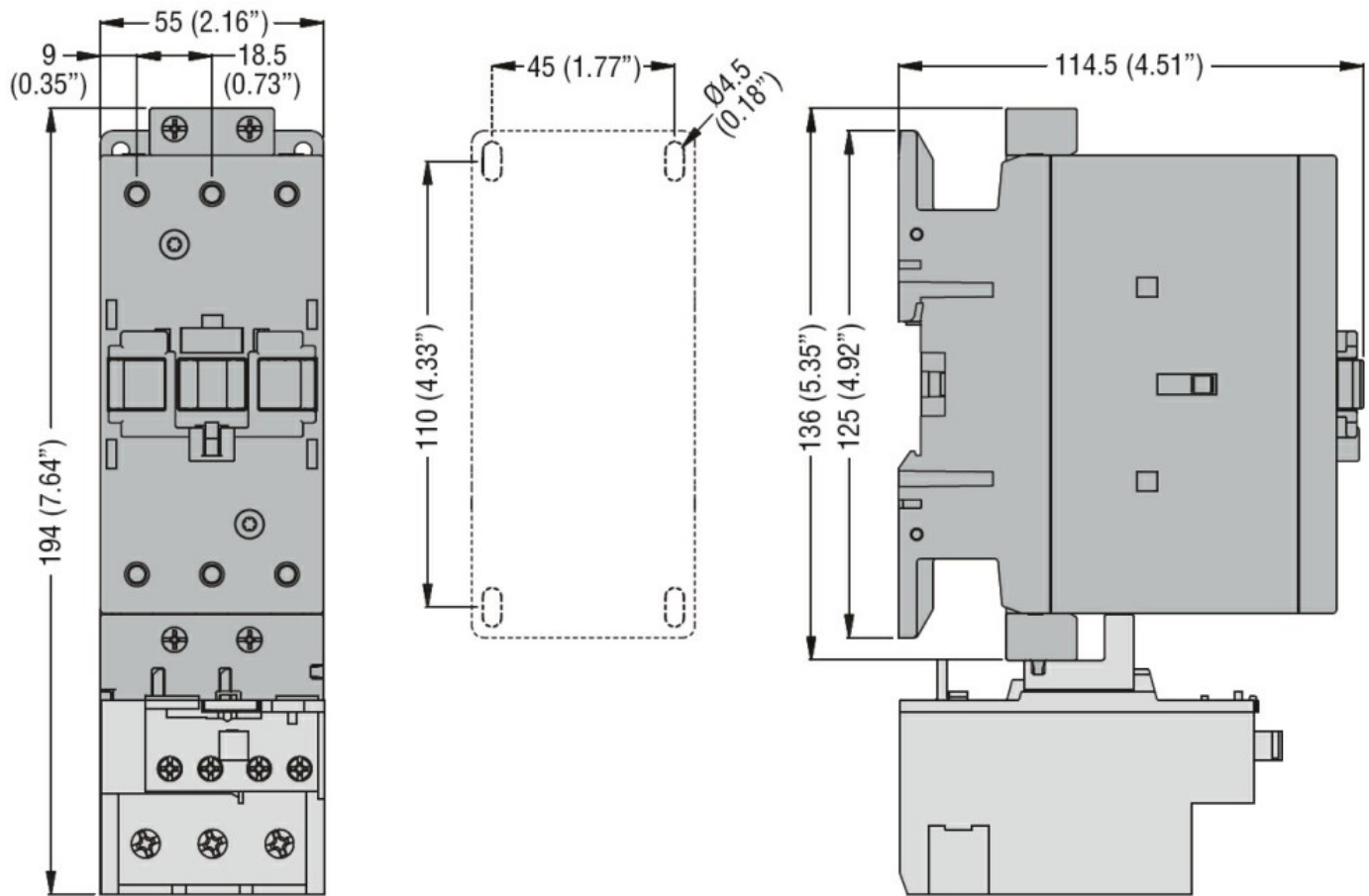
m 3000

Resistance & Protection

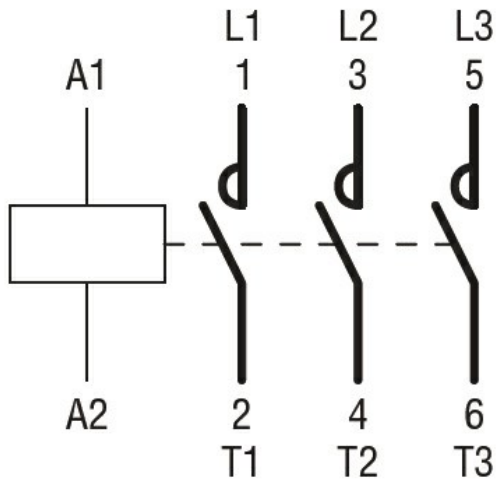
Pollution degree

3

Dimensions



Wiring diagrams



Certifications and compliance

Compliance

CSA C22.2 n° 60947-1
CSA C22.2 n° 60947-4-62
UL 60947-1
UL 60947-4-1

Certificates

cULus

ETIM classification

ETIM 8.0

EC000066 -
Power contactor,
AC switching