

Product designation			Power contactor	
Product type designation			DPBF65	
Contact characteristics				
Number of poles		Nr.	3	
Operational frequency		min	Hz	25
		max	Hz	400
Mechanical features				
Operating position		normal allowable	Vertical plan ±30°	
Fixing		Screw / DIN rail 35mm		
Weight		g	1020	
Operations				
Mechanical life		cycles	15000000	
Electrical life		cycles	1400000	
Safety related data				
Performance level B10d according to EN/ISO 13489-1		rated load mechanical load	cycles	1400000
			cycles	15000000
Mirror contats according to IEC/EN 609474-4-1		yes		
EMC compatibility		yes		
AC coil operating				
Rated AC voltage at 60Hz		V	24	
AC operating voltage		of 60Hz coil powered at 60Hz		
		pick-up		
		min	%Us	80
		max	%Us	110
		drop-out		
		min	%Us	20
		max	%Us	55
AC average coil consumption at 20°C		of 50/60Hz coil powered at 50Hz		
		in-rush	VA	30
		holding	VA	4
		of 50/60Hz coil powered at 60Hz		
		in-rush	VA	25
		holding	VA	3
		of 60Hz coil powered at 60Hz		
		in-rush	VA	210
		holding	VA	15
Dissipation at holding ≤20°C 50Hz		W	5	
Max cycles frequency				
Mechanical operation		cycles/h	3600	
Operating times				
Average time for Us control in AC		Closing NO	min	ms 12
			max	ms 28
		Opening NO		

in DC	Closing NC	min	ms	8
		max	ms	22
	Opening NC	min	ms	0
		max	ms	0
	Closing NO	min	ms	40
		max	ms	85
	Opening NO	min	ms	20
		max	ms	55

UL technical data

Full-load current (FLA) for three-phase AC motor

at 600V A 80

Locked rotor current (LRA)

A 480

General USE

Contactor

AC current A 100

Short-circuit protection fuse, 600V

High fault

Short circuit current kA 100
Fuse rating A 200
Fuse class J

Standard fault

Short circuit current kA 10
Fuse rating A 200
Fuse class RK5

Ambient conditions

Temperature

Operating temperature

min °C -50
max °C 70

Storage temperature

min °C -60
max °C 80

Max altitude

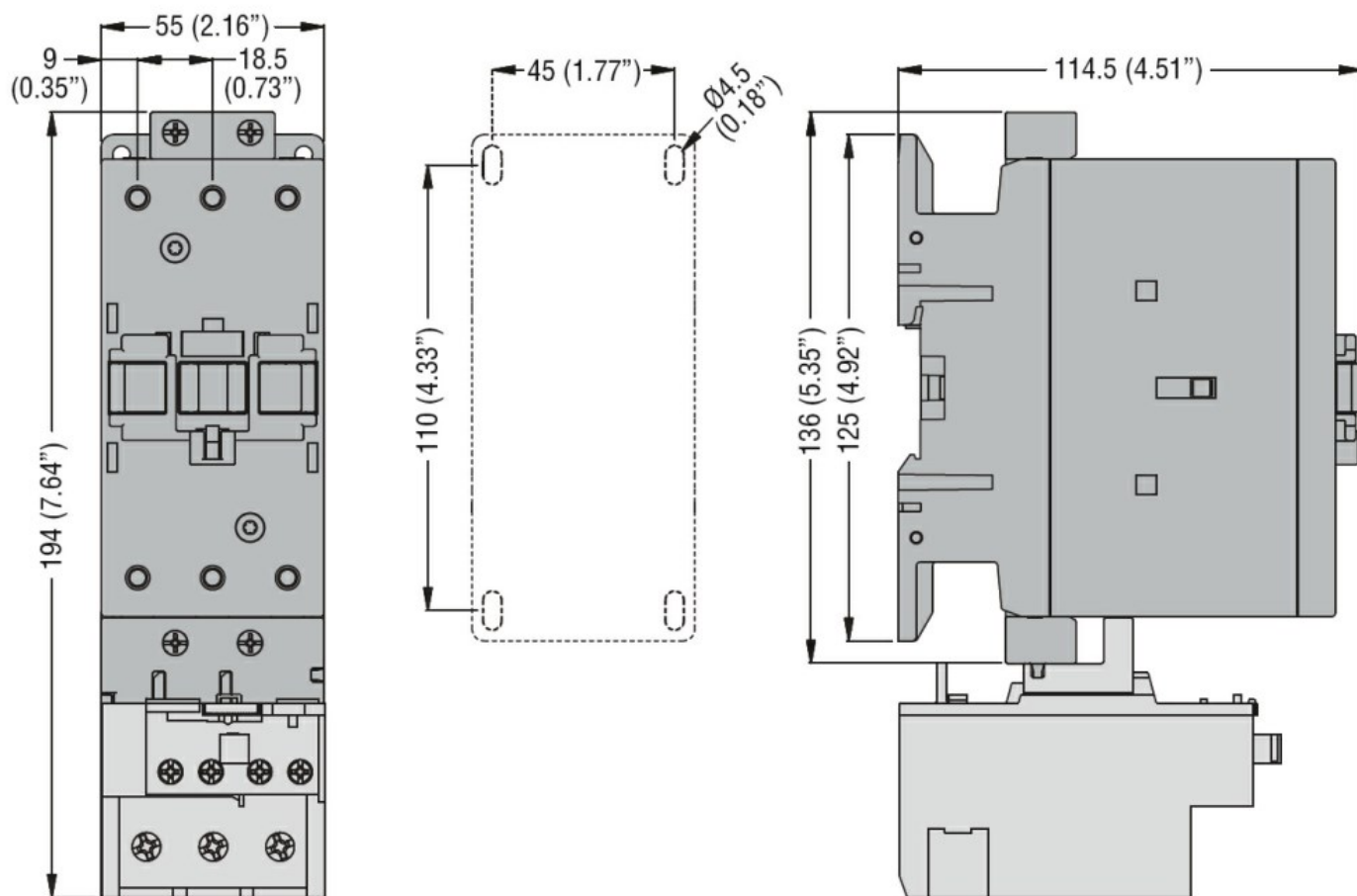
m 3000

Resistance & Protection

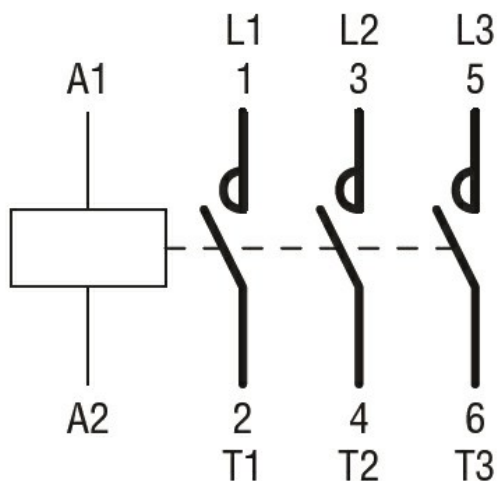
Pollution degree

3

Dimensions



Wiring diagrams



Certifications and compliance

Compliance

CSA C22.2 n° 60947-1
CSA C22.2 n° 60947-4-64
UL 60947-1
UL 60947-4-1

Certificates

cULus

ETIM classification

ETIM 8.0

EC000066 -
Power contactor,
AC switching