

Product designation			Power contactor			
Product type designation			DPBF65			
Contact characteristics						
Number of poles			Nr.	3		
Operational frequency			min	Hz	25	
			max	Hz	400	
Mechanical features						
Operating position			normal		Vertical plan	
			allowable		±30°	
Fixing			Screw / DIN rail		35mm	
Weight			g	1020		
Operations						
Mechanical life			cycles	15000000		
Electrical life			cycles	1400000		
Safety related data						
Performance level B10d according to EN/ISO 13489-1			rated load		cycles	1400000
			mechanical load		cycles	15000000
Mirror contats according to IEC/EN 609474-4-1			yes			
EMC compatibility			yes			
AC coil operating						
Rated AC voltage at 50/60Hz			V	24		
Rated AC voltage at 60Hz			V	230		
AC operating voltage						
of 50/60Hz coil powered at 50Hz			pick-up			
			min	%Us	75	
			max	%Us	115	
			drop-out			
			min	%Us	20	
			max	%Us	55	
of 50/60Hz coil powered at 60Hz			pick-up			
			min	%Us	80	
			max	%Us	115	
			drop-out			
			min	%Us	20	
			max	%Us	55	
of 60Hz coil powered at 60Hz			pick-up			
			min	%Us	80	
			max	%Us	110	
			drop-out			
			min	%Us	20	
			max	%Us	55	
AC average coil consumption at 20°C						
of 50/60Hz coil powered at 50Hz			in-rush			30
			holding			4
of 50/60Hz coil powered at 60Hz						

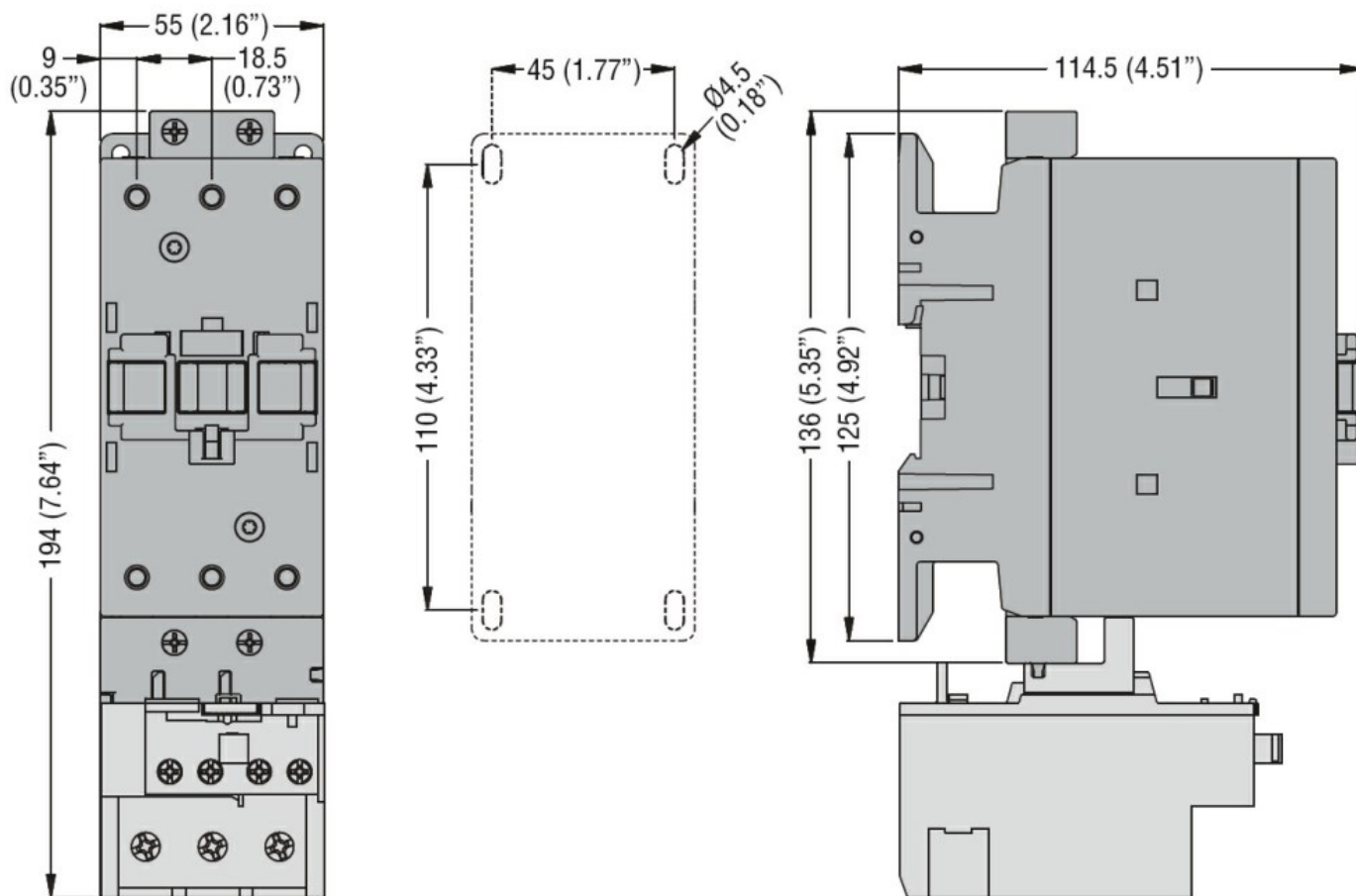
		in-rush	VA	25
		holding	VA	3
of 60Hz coil powered at 60Hz				
		in-rush	VA	210
		holding	VA	15
Dissipation at holding ≤20°C 50Hz		W		5
Max cycles frequency				
Mechanical operation			cycles/h	3600
Operating times				
Average time for Us control				
in AC				
		Closing NO		
		min	ms	12
		max	ms	28
		Opening NO		
		min	ms	8
		max	ms	22
		Closing NC		
		min	ms	0
		max	ms	0
		Opening NC		
		min	ms	0
in DC				
		Closing NO		
		min	ms	40
		max	ms	85
		Opening NO		
		min	ms	20
		max	ms	55
UL technical data				
Full-load current (FLA) for three-phase AC motor				
		at 600V	A	80
Locked rotor current (LRA)			A	480
General USE				
Contactor				
		AC current	A	100
Short-circuit protection fuse, 600V				
High fault				
		Short circuit current	kA	100
		Fuse rating	A	200
		Fuse class		J
Standard fault				
		Short circuit current	kA	10
		Fuse rating	A	200
		Fuse class		RK5
Ambient conditions				
Temperature				
Operating temperature				
		min	°C	-50
		max	°C	70
Storage temperature				
		min	°C	-60
		max	°C	80
Max altitude			m	3000

Resistance & Protection

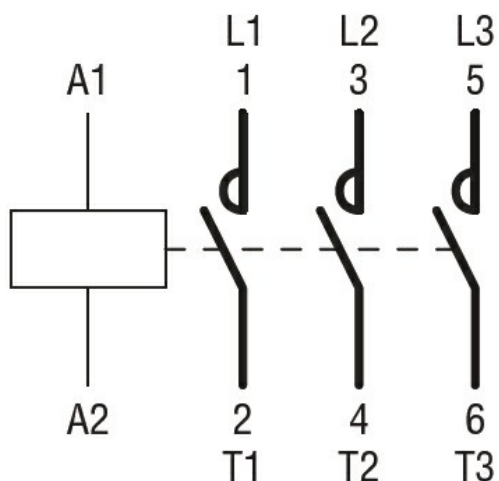
Pollution degree

3

Dimensions



Wiring diagrams



Certifications and compliance

Compliance

CSA C22.2 n° 60947-1

CSA C22.2 n° 60947-4-66

UL 60947-1

UL 60947-4-1

Certificates

cULus

ETIM classification

ETIM 8.0

EC000066 -
Power contactor,
AC switching