

Product designation			Power contactor	
Product type designation			DPBF80	
Contact characteristics				
Number of poles		Nr.	3	
Operational frequency				
	min	Hz	25	
	max	Hz	400	
Mechanical features				
Operating position		normal allowable	Vertical plan ±30°	
Fixing			Screw / DIN rail 35mm	
Weight		g	1020	
Operations				
Mechanical life		cycles	15000000	
Electrical life		cycles	1300000	
Safety related data				
Performance level B10d according to EN/ISO 13489-1				
	rated load	cycles	1300000	
	mechanical load	cycles	15000000	
Mirror contats according to IEC/EN 609474-4-1			yes	
EMC compatibility			yes	
AC coil operating				
Rated AC voltage at 60Hz		V	230	
AC operating voltage				
	of 60Hz coil powered at 60Hz			
	pick-up			
	min	%Us	80	
	max	%Us	110	
	drop-out			
	min	%Us	20	
	max	%Us	55	
AC average coil consumption at 20°C				
	of 50/60Hz coil powered at 50Hz			
	in-rush	VA	30	
	holding	VA	4	
	of 50/60Hz coil powered at 60Hz			
	in-rush	VA	25	
	holding	VA	3	
	of 60Hz coil powered at 60Hz			
	in-rush	VA	210	
	holding	VA	15	
Dissipation at holding ≤20°C 50Hz		W	5	
Max cycles frequency				
Mechanical operation		cycles/h	3600	
Operating times				
Average time for Us control				
	in AC			
	Closing NO			
	min	ms	12	
	max	ms	28	
	Opening NO			

in DC	Closing NC	min	ms	8
		max	ms	22
	Opening NC	min	ms	0
		max	ms	0
	Closing NO	min	ms	40
		max	ms	85
	Opening NO	min	ms	20
		max	ms	55

UL technical data

Full-load current (FLA) for three-phase AC motor

at 600V A 80

Locked rotor current (LRA)

A 480

General USE

Contactor

AC current A 115

Short-circuit protection fuse, 600V

High fault

Short circuit current kA 100
Fuse rating A 200
Fuse class J

Standard fault

Short circuit current kA 10
Fuse rating A 200
Fuse class RK5

Ambient conditions

Temperature

Operating temperature

min °C -50
max °C 70

Storage temperature

min °C -60
max °C 80

Max altitude

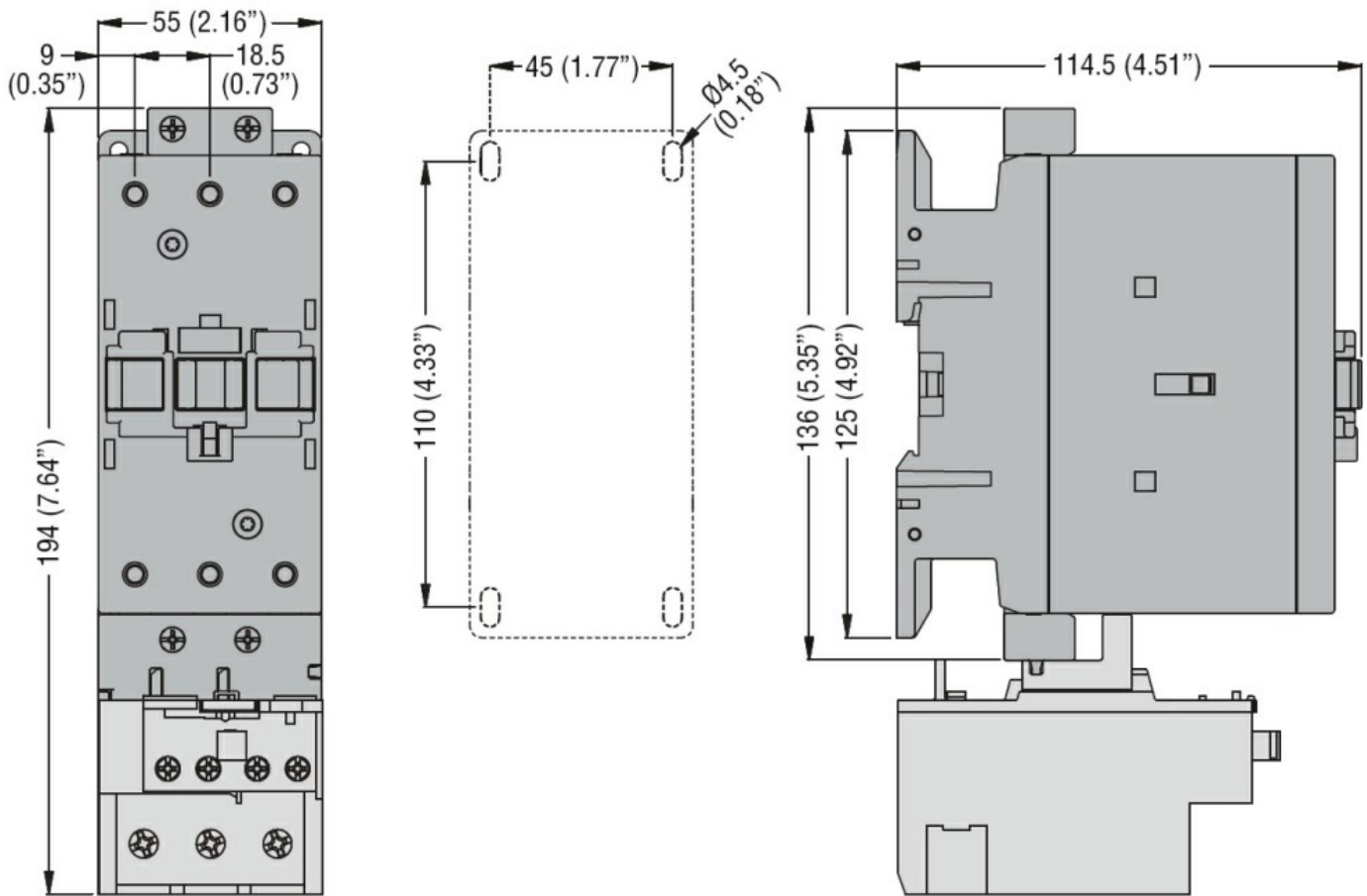
m 3000

Resistance & Protection

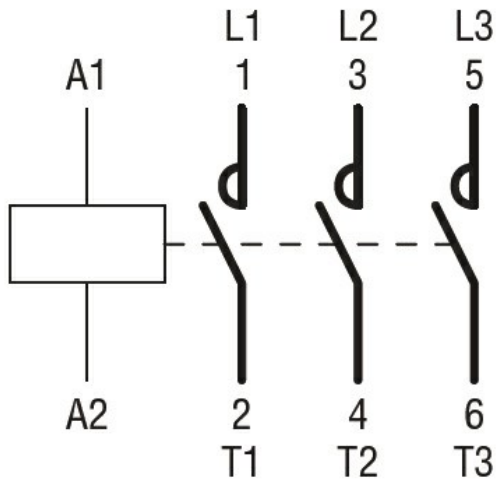
Pollution degree

3

Dimensions



Wiring diagrams



Certifications and compliance

Compliance

CSA C22.2 n° 60947-1
CSA C22.2 n° 60947-4-69
UL 60947-1
UL 60947-4-1

Certificates

cULus

ETIM classification

ETIM 8.0

EC000066 -
Power contactor,
AC switching