



Product designation			Power contactor		
Product type designation			DPBG12		
Contact characteristics					
Number of poles			Nr.	3	
Operational frequency			min	Hz	25
			max	Hz	400
Mechanical features					
Operating position			normal allowable	Vertical plan ±30°	
Fixing			Screw / DIN rail 35mm		
Weight			g	180	
Operations					
Mechanical life			cycles	20000000	
Electrical life			cycles	500000	
Safety related data					
Performance level B10d according to EN/ISO 13489-1			rated load	cycles	500000
			mechanical load	cycles	20000000
Mirror contats according to IEC/EN 609474-4-1			yes		
EMC compatibility			yes		
AC coil operating					
Rated AC voltage at 60Hz			V	120	
AC operating voltage			of 60Hz coil powered at 60Hz		
pick-up			min	%Us	75
			max	%Us	115
drop-out			of 60Hz coil powered at 60Hz		
			min	%Us	20
			max	%Us	55
AC average coil consumption at 20°C			of 50/60Hz coil powered at 50Hz		
			in-rush	VA	30
			holding	VA	4
of 50/60Hz coil powered at 60Hz			of 50/60Hz coil powered at 60Hz		
			in-rush	VA	25
			holding	VA	3
of 60Hz coil powered at 60Hz			of 60Hz coil powered at 60Hz		
			in-rush	VA	30
			holding	VA	4
Dissipation at holding ≤20°C 50Hz			W	0.95	
Max cycles frequency					

Mechanical operation

cycles/h 3600

Operating times

Average time for Us control

in AC

Closing NO

min	ms	12
max	ms	21

Opening NO

min	ms	9
max	ms	18

Closing NC

min	ms	17
max	ms	26

Opening NC

min	ms	7
max	ms	17

in DC

Closing NO

min	ms	18
max	ms	25

Opening NO

min	ms	2
max	ms	3

Closing NC

min	ms	3
max	ms	5

Opening NC

min	ms	11
max	ms	17

UL technical data

Full-load current (FLA) for three-phase AC motor

at 480V	A	11
at 600V	A	11

Locked rotor current (LRA)

A	84
---	----

Yielded mechanical performance

for single-phase AC motor

110/120V	HP	0.5
230V	HP	1.5

for three-phase AC motor

200/208V	HP	3
220/230V	HP	3
460/480V	HP	7.5
575/600V	HP	10

General USE

Contactor

AC current	A	20
------------	---	----

Short-circuit protection fuse, 600V

High fault

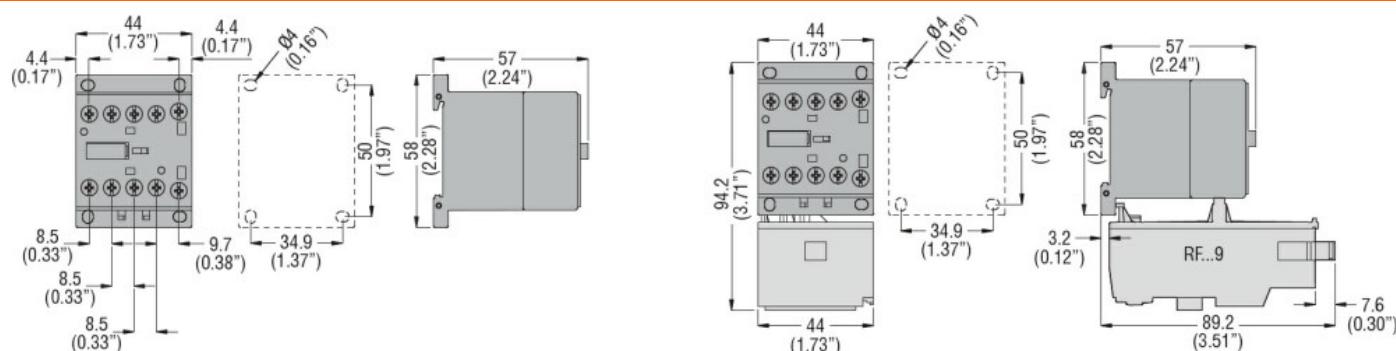
Short circuit current	kA	100
Fuse rating	A	30
Fuse class	J	

Standard fault

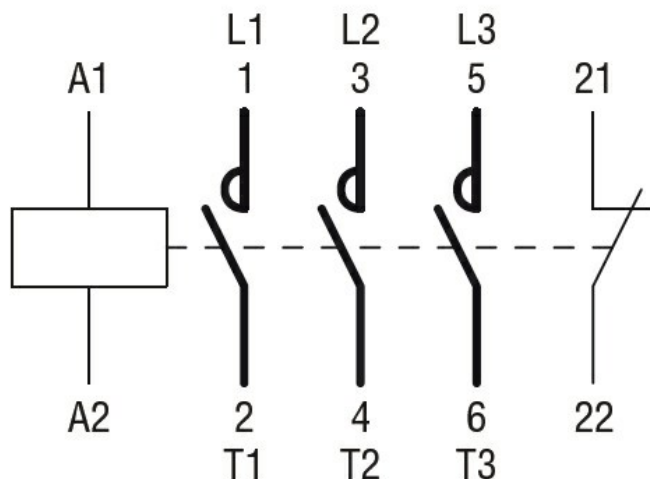
Short circuit current	kA	5
Fuse rating	A	30

Fuse class		RK5	
Contact rating of auxiliary contacts according to UL		A600 - Q600	
Ambient conditions			
Temperature			
Operating temperature		min	°C -50
		max	°C +70
Storage temperature		min	°C -60
		max	°C +80
Max altitude		m	3000
Resistance & Protection			
Pollution degree		3	

Dimensions



Wiring diagrams



Certifications and compliance

Compliance

CSA C22.2 n° 60947-1
CSA C22.2 n° 60947-4-72
UL 60947-1
UL 60947-4-1

Certificates

cULus

ETIM classification

ETIM 8.0

EC000066 -
Power contactor,
AC switching