

Product designation			Auxiliary contactor	
Product type designation			DPBG12	
Contact characteristics				
Number of poles			Nr.	3
Operational frequency			min	Hz
			max	Hz
Mechanical features				
Operating position			normal allowable	Vertical plan ±30°
Fixing			Screw / DIN rail 35mm	
Weight			g	200
Operations				
Mechanical life			cycles	20000000
Electrical life			cycles	500000
Safety related data				
Performance level B10d according to EN/ISO 13489-1				
			rated load	cycles
			mechanical load	cycles
Mirror contats according to IEC/EN 609474-4-1			YES	
EMC compatibility			YES	
AC coil operating				
Rated AC voltage at 60Hz			V	230
AC operating voltage				
of 60Hz coil powered at 60Hz				
pick-up			min	%Us
			max	%Us
drop-out			min	%Us
			max	%Us
AC average coil consumption at 20°C				
of 50/60Hz coil powered at 50Hz			in-rush	VA
			holding	VA
of 50/60Hz coil powered at 60Hz			in-rush	VA
			holding	VA
of 60Hz coil powered at 60Hz			in-rush	VA
			holding	VA
Dissipation at holding ≤20°C 50Hz			W	0.9
Max cycles frequency				
Mechanical operation			cycles/h	3600
Operating times				
Average time for Us control				
in AC				
Closing NO			min	ms
			max	ms

in DC	Opening NO	min	ms	9
		max	ms	18
	Closing NC	min	ms	17
		max	ms	26
	Opening NC	min	ms	7
		max	ms	17
	Closing NO	min	ms	18
		max	ms	25
	Opening NO	min	ms	2
		max	ms	3
	Closing NC	min	ms	3
		max	ms	5
	Opening NC	min	ms	11
		max	ms	17

UL technical data

Full-load current (FLA) for three-phase AC motor

at 480V	A	11
at 600V	A	11

Locked rotor current (LRA)

A	84
---	----

Yielded mechanical performance

for single-phase AC motor

110/120V	HP	0.5
230V	HP	1.5

for three-phase AC motor

200/208V	HP	3
220/230V	HP	3
460/480V	HP	7.5
575/600V	HP	10

General USE

Contactor

AC current	A	20
------------	---	----

Short-circuit protection fuse, 600V

High fault

Short circuit current	kA	100
Fuse rating	A	30
Fuse class		J

Standard fault

Short circuit current	kA	5
Fuse rating	A	30
Fuse class		RK5

Contact rating of auxiliary contacts according to UL

A600 - Q600

Ambient conditions

Temperature

Operating temperature

min	°C	-50
max	°C	+70

Storage temperature

min	°C	-60
max	°C	+80

Max altitude

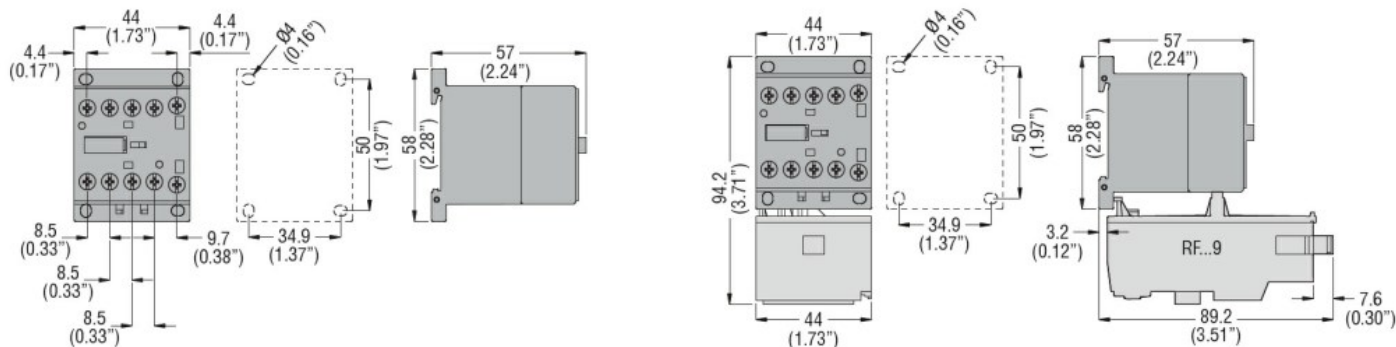
m	3000
---	------

Resistance & Protection

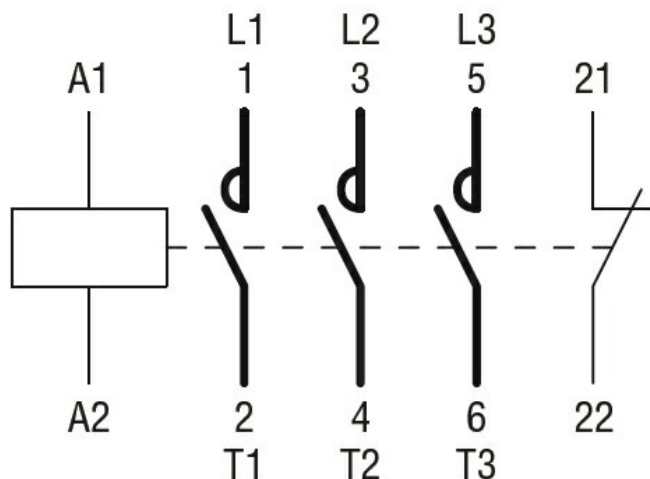
Pollution degree

3

Dimensions



Wiring diagrams



Certifications and compliance

Compliance

CSA C22.2 n° 60947-1
CSA C22.2 n° 60947-4-79
UL 60947-1
UL 60947-4-1

Certificates

cULus

ETIM classification

ETIM 8.0

EC000066 -
Power contactor,
AC switching