



Product designation

Product type designation

Type of fuse

Number of poles

Operating voltage type

Switch
disconnecter with
fuse
GM
L
Nr. 3
AC

Contact characteristics

IEC Conventional free air thermal current I _{th}	A	800
Rated insulation voltage U _i IEC/EN	V	1000
Rated impulse withstand voltage U _{imp}	kV	12
Operating current I _e		

AC21A

400V	A	800
500V	A	800
690V	A	800

AC22A

400V	A	800
500V	A	800
690V	A	800

AC23A

400V	A	800
500V	A	800
690V	A	800

Power dissipation per pole max	W	75
Power dissipation per pole without fuse	W	75
Max fuse power dissipation		

in open air	W	55
in enclosure	W	55

Rated operational power AC23A		
400V	kW	450
690V	kW	710

Rated short time current (1s) I _{cs} (rms)	kA	20
---	----	----

Short-circuit protection with fuse	Class/A	L/800
------------------------------------	---------	-------

Making capacity AC23A 400V	A	8000
----------------------------	---	------

Breaking capacity AC23A 400V	A	6400
------------------------------	---	------

Mechanical life	cycles	3000
-----------------	--------	------

Electrical life AC21A	cycles	500 (AC23A 400V)
-----------------------	--------	------------------

Mechanical features

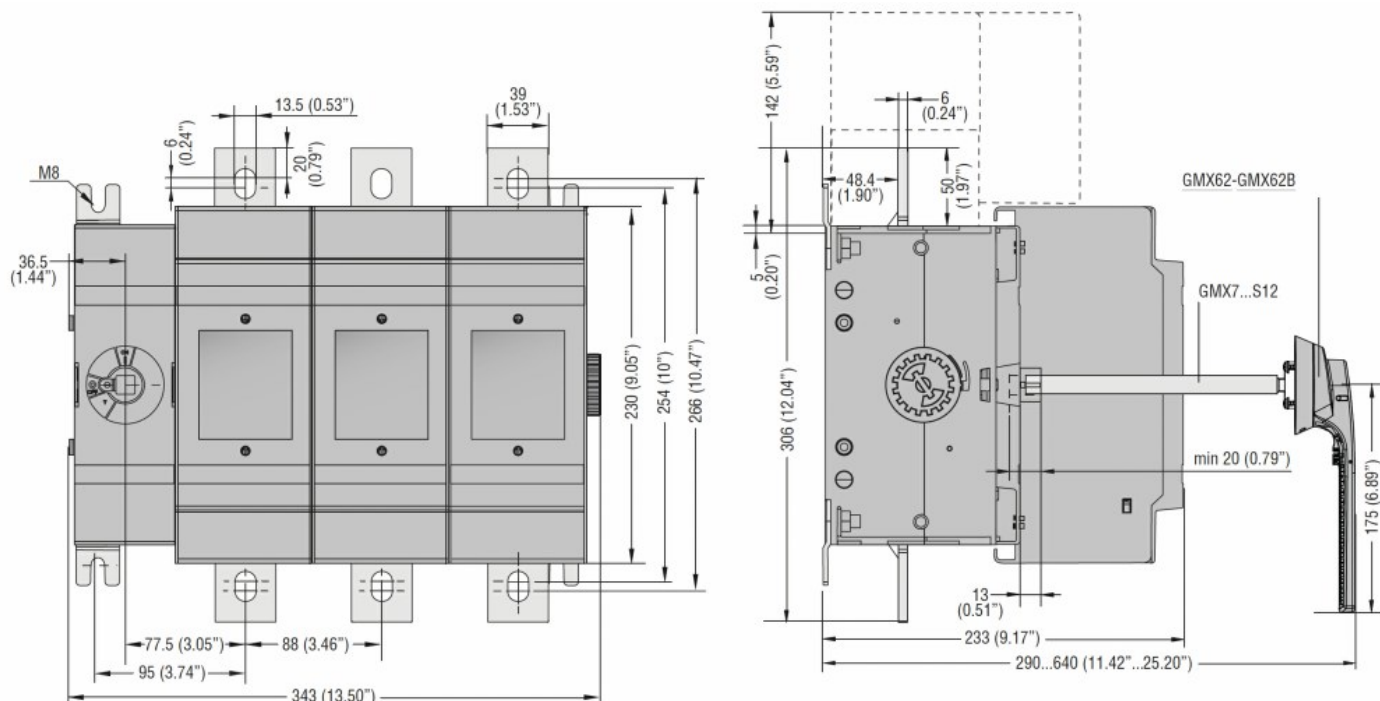
Operating position

normal	Vertical plan
allowable	Any

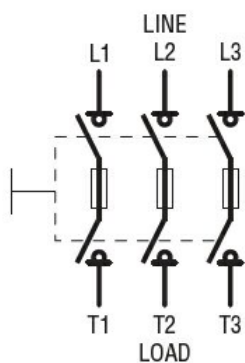
Fixing	Screw
--------	-------

Terminals

	type	Bar
Tightening torque for terminals	max	Nm 56.5
	max	lbin 41.6
Tightening torque for fuse links bolts		Nm 40
Tightening torque for terminal lug		Nm 54
Conductor section	AWG/kcmil min	(2x) 2
Terminal kit lugs		GMX504
UL technical data		
UL Standard		UL98
General purpose current rating	A	800
Operating voltage max	V	600
Horsepower/FLA current three phase motor	240V HP	250/602
	480V HP	500/590
	600V HP	600/472
Short circuit rating	kA rms	200
Short circuit rating with fuse	Class/A	L/800
Ambient conditions		
Operating temperature	min °C	-25
	max °C	55
Storage temperature	min °C	-40
	max °C	70
Max altitude	m	3000
Resistance & Protection		
Frontal IP degree		IP20
Pollution degree		3
Dimensions		



Wiring diagrams



Certifications and compliance

Compliance

IEC/EN 60947-1

IEC/EN 60947-3

Certifications

cULus according to UL98/CSA C22.2 n°4

ETIM classification

ETIM 8.0

EC000216 -
Switch
disconnecter