

|  |                                      |    |      |
|--|--------------------------------------|----|------|
| Product designation                                    | Rotary cam switches                  |    |      |
| Product type designation                               | GX16                                 |    |      |
| General characteristics                                |                                      |    |      |
| Switching diagram                                      | 12 - Star-delta motor starter switch |    |      |
| N° of elements   | 4                                    |    |      |
| Mounting form  | U - Front mounting with black handle |    |      |
| Contact characteristics                                |                                      |    |      |
| Rated insulation voltage Ui                            | IEC/EN                               | V  | 690  |
|  | UL/CSA                               | V  | 600  |
| Rated impulse withstand voltage Uimp                   |                                      | kV | 6    |
| Conventional free air thermal current Ith              | IEC/EN                               | A  | 16   |
|  | UL/CSA                               | A  | 12   |
| Rated operational voltage                              |                                      | V  | 440  |
| Rated operational impulse voltage                      |                                      | kV | 4    |
| Maximum fuse size for short-circuit protection In (gG) | 10kA                                 | A  | 16   |
|  | 15kA                                 | A  | 16   |
|  | 25kA                                 | A  | 16   |
| Rated short time current Icw                           | 1s                                   | A  | 250  |
| Conductivity   | 10/5 mA/V                            |    |      |
| Operational current Ie IEC/EN                          |                                      |    |      |
| AC1/AC21A  |                                      | A  | 16   |
| AC15   | 110V                                 | A  | 10   |
|  | 220/230V                             | A  | 8    |
|  | 380/400V                             | A  | 4    |
|  | 660/690V                             | A  | 1.5  |
| Rated operational power in AC                          |                                      |    |      |
| Three-phase AC-3                                       | 220/230V                             | kW | 3.5  |
|  | 380/440V                             | kW | 4.5  |
|  | 500/690V                             | kW | 5.5  |
| Single-phase AC-3                                      | 110V                                 | kW | 0.55 |
|  | 220/230V                             | kW | 1.5  |
|  | 380/440V                             | kW | 2.2  |
| Three-phase AC23A                                      | 220/230V                             | kW | 3.7  |
|  | 380/440V                             | kW | 6.5  |
|  | 500/690V                             | kW | 7.5  |
| Single-phase AC23A                                     | 110V                                 | kW | 0.75 |
|  | 220/230V                             | kW | 1.8  |
|  | 380/440V                             | kW | 3    |

Rated operational current in DC

DC21A

|      |   |      |
|------|---|------|
| 48V  | A | 16   |
| 60V  | A | 16   |
| 110V | A | 4    |
| 220V | A | 0.6  |
| 440V | A | 0.25 |

DC23A (poles in series)

|      |   |        |
|------|---|--------|
| 24V  | A | 16 (1) |
| 48V  | A | 16 (2) |
| 60V  | A | 16 (3) |
| 110V | A | 10 (3) |
| 220V | A | 7 (4)  |

DC13

|      |   |      |
|------|---|------|
| 24V  | A | 16   |
| 48V  | A | 14   |
| 60V  | A | 10   |
| 110V | A | 1    |
| 220V | A | 0.4  |
| 440V | A | 0.15 |

Power dissipation

W 0.6

#### Mechanical features

Terminals screw

3M

Tightening torque for terminals max

Nm 0.5

Conductor size

AWG - Rigid cable

|     |     |    |
|-----|-----|----|
| min | AWG | 20 |
| Max | AWG | 12 |

AWG - Flexible cable

|     |     |    |
|-----|-----|----|
| min | AWG | 20 |
| Max | AWG | 12 |

Conductor size (IEC) - Flexible cable

|     |                 |     |
|-----|-----------------|-----|
| min | mm <sup>2</sup> | 0.5 |
| Max | mm <sup>2</sup> | 2.5 |

Conductor size (IEC) - Rigid cable

|     |                 |     |
|-----|-----------------|-----|
| min | mm <sup>2</sup> | 0.5 |
| Max | mm <sup>2</sup> | 2.5 |

Mechanical life

cycles 1X10<sup>6</sup>

#### UL technical data

Motor power for direct-on-line control

for three-phase motor

|      |    |     |
|------|----|-----|
| 120V | HP | 1.5 |
| 240V | HP | 3   |
| 480V | HP | 5   |
| 600V | HP | 5   |

for single-phase motor

|      |    |      |
|------|----|------|
| 120V | HP | 0.75 |
| 240V | HP | 1    |

#### Ambient conditions

Temperature

Operating temperature

|     |    |     |
|-----|----|-----|
| min | °C | -25 |
| max | °C | +55 |

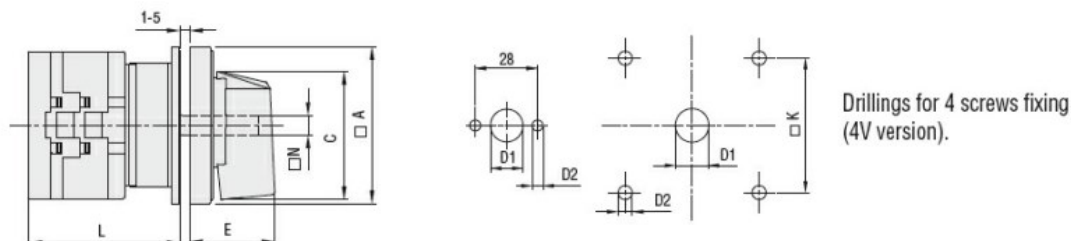
Storage temperature

|     |    |     |
|-----|----|-----|
| min | °C | -40 |
| max | °C | +70 |

### Resistance & Protection

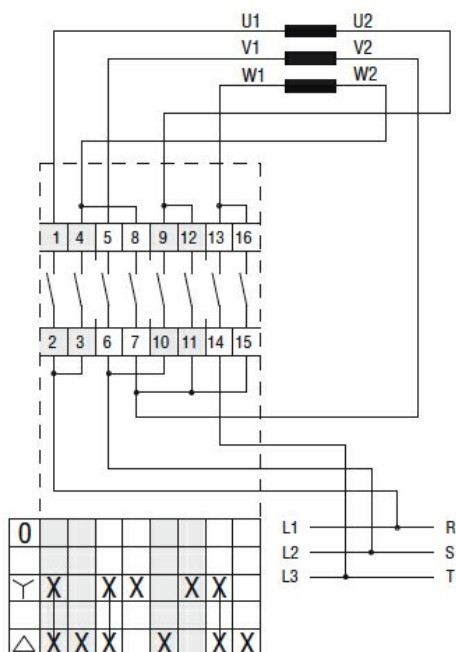
|                     |      |
|---------------------|------|
| Frontal IP degree   | IP65 |
| Terminals IP degree | IP20 |

### Dimensions



| Series | Dimensions |      |     |     |      |    |    | L Number of elements |      |    |      |    |      |     |       |     |       |     |       |
|--------|------------|------|-----|-----|------|----|----|----------------------|------|----|------|----|------|-----|-------|-----|-------|-----|-------|
|        | □A         | C    | ØD1 | ØD2 | E    | □K | □N | 1                    | 2    | 3  | 4    | 5  | 6    | 7   | 8     | 9   | 10    | 11  | 12    |
| GX16   | 48         | 39.5 | 12  | 5   | 26.5 | 36 | 6  | 43                   | 51.5 | 60 | 68.5 | 77 | 85.5 | 94  | 102.5 | 111 | 119.5 | 128 | 136.5 |
| GX20   | 48         | 39.5 | 12  | 5   | 26.5 | 36 | 6  | 43                   | 51.5 | 60 | 68.5 | 77 | 85.5 | 94  | 102.5 | 111 | 119.5 | 128 | 136.5 |
| GX32   | 65         | 53   | 14  | 5   | 34.5 | 48 | 7  | 51                   | 63   | 75 | 85   | 99 | 111  | 123 | 135   | 147 | 159   | 171 | 183   |
| GX40   | 65         | 53   | 14  | 5   | 34.5 | 48 | 7  | 51                   | 63   | 75 | 85   | 99 | 111  | 123 | 135   | 147 | 159   | 171 | 183   |

### Wiring diagrams



### Certifications and compliance

#### Compliance

CSA C22.2 n° 14

IEC/EN/BS 60947-1

IEC/EN/BS 60947-3

IEC/EN/BS 60947-5-1

IEC/EN/BS 61058-1

UL60947-4-1

#### Certificates

cULus

---

EAC

ETIM classification

ETIM 8.0

EC001105 - Off-  
load switch