



Product designation			SLIM RELAY	
Product type designation			HR101C	
Contact characteristics				
Contact configuration			1 C/O	
Rated insulation voltage Ui IEC/EN		V	250	
Rated impulse withstand voltage Uimp		kV	4	
IEC Conventional free air thermal current Ith		A	6	
Maximum instantaneous current		A	20 (500ms)	
Rated current (In)		A	6	
Relay control voltage		V	60VDC; 110... 240VAC/DC	
UL/CSA and IEC/EN 60947-5-1 designation			B300 – R300	
UL rating			6A 277VAC; 6A 30VDC	
Max contrrollable power in		AC-1	W	1500
		AC-15	VA	360
Rated operating power AC-1		VA	1500	
Rated operating power AC-15		230 VAC	VA	360
Single-phase motor control		230VAC	kW	0.186
Rated operating current DC-1		30V	A	6
		110V	A	0.2
		220V	A	0.12
Minimum switching load		V / mA	5 / 100	
Contact impedance		mΩ	100	
Contact material			Ag/Ni	
Operating times				
Closing		ms	≤8	
Opening		ms	≤4	
Operations				
Mechanical life		cycles	10000000	
Electrical life AC1		cycles	30000	
Coil characteristics				
Average coil consumption DC at 20°C		W	0.2	
Operating range		Closing	% Un	≥75
		Opening	% Un	≥5
Maximum cycle frequency		cycles/h	10000	
Mechanical features				
Max socket terminal tightening torque		Nm	0.5	
Socket screw tightening tool (cross / flat blade)			PH0 / 3.5mm	

Conductor section	AWG/Kcmil	min		20	
		max		16	
	IEC	min		mm ²	0.5
		max		mm ²	1.5
Operating position	normal		Any		
Fixing				On 35mm DIN rail	

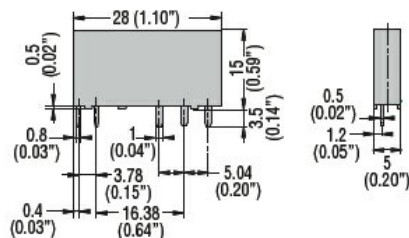
Ambient conditions

Temperature	Operating temperature	min	°C	-40
		max	°C	+70
		<hr/>		
		Storage temperature		
	min	°C	-40	
	max	°C	+80	

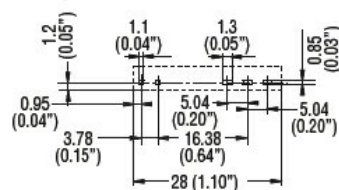
Other features

Indication	Yes (on the socket)
Mechanical contact position indicator	No
Mechanical test actuator	No

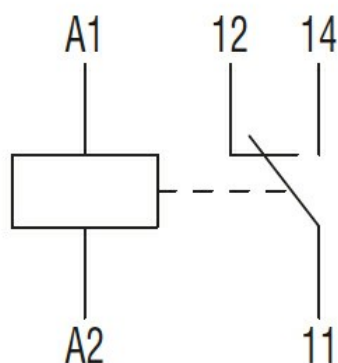
Dimensions



PCB layout



Wiring diagrams



Certifications and compliance

Compliance

IEC/EN 61810

Certificates

CSA

cURus

EAC

VDE

ETIM classification

ETIM 8.0

EC001437 -
Switching relay