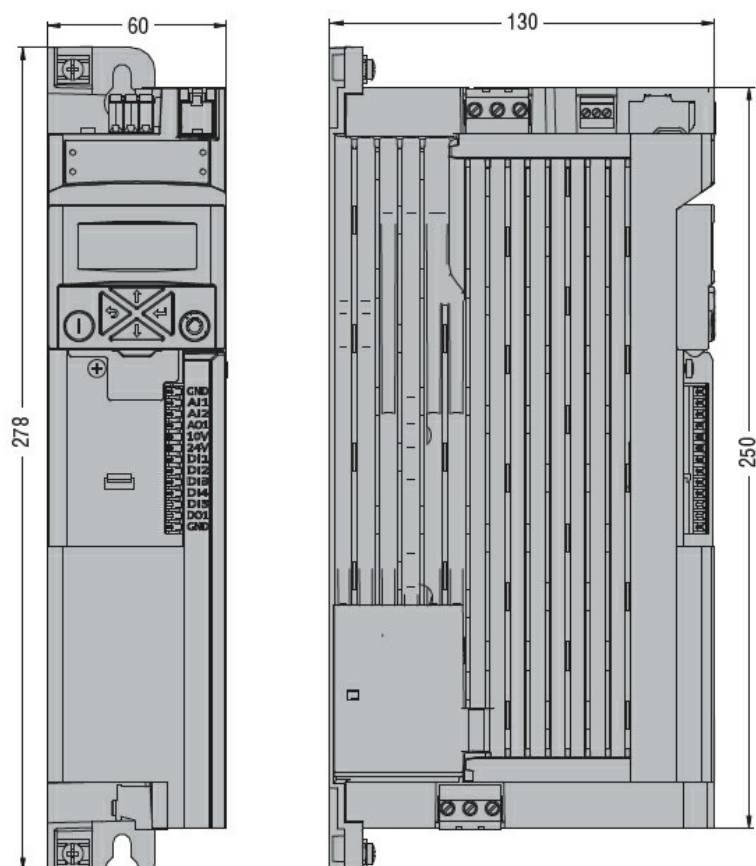




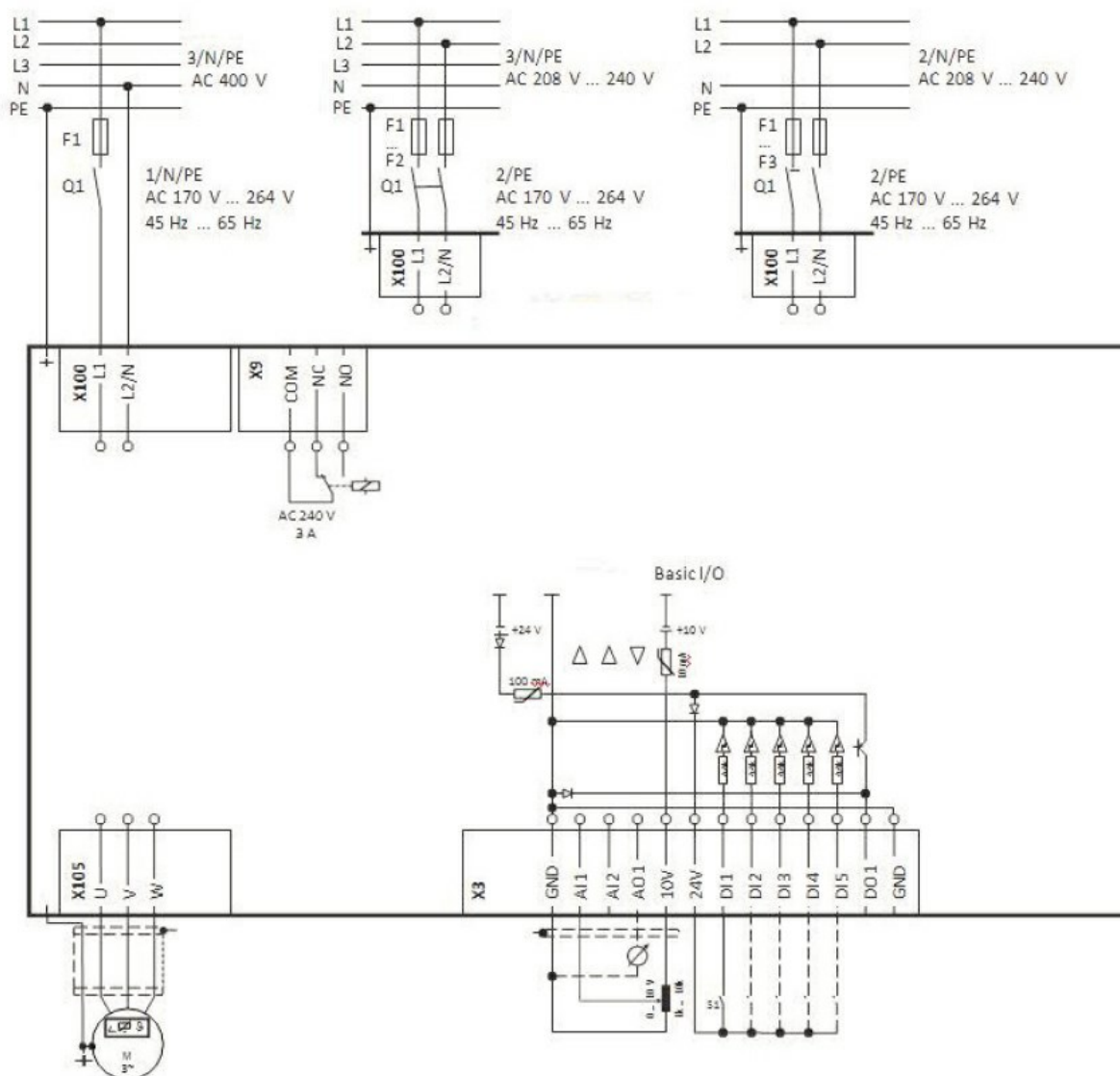
Product designation			Variable speed drives
Product type designation			VLA1
General characteristics			
Rated power supply voltage			200...240VAC 50/60Hz
Rated output voltage		VAC	Three-phase 0...240VAC 0-599Hz
Rated output current		A	7
Rated output power		kW	1.5
Rated output power		HP	2
EMC filter			Built-in EMC suppressor cat. C2
Communication port			None
Technical features			
Input type			Single-phase
Rated mains voltage		VAC	200...240
Operating mains voltage range		VAC	170...264
Rated mains frequency		Hz	50/60
Operating mains frequency range		Hz	45...65
Rated mains current without mains choke			16.7
Rated mains current with mains choke			13.9
Output type			Three-phase
Output voltage range		VAC	0...240
Output frequency range		Hz	0...599
Current overload		%/s	150% for 60s, 200% for 3s
Power loss			50W
Brake chopper			No
Switching frequency			2...16kHz
Max motor cable length			
Shielded			
		Without EMC category	m 50
		Category C2	m 20

Speed reference signals	External potentiometer 0...10kΩ Voltage signals: 0...10VDC Current signals: 0/4...20mA Buttons on front keyboard Door-mount installation kit 15 preset speeds via digital inputs Motor potentiometer
3-wire control	Yes
S-shape curves	Yes
Slip compensation	Yes
Flying restart	Yes
Access to DC bus	No
DC braking	Yes
DC injection at start	Yes
PID control	Yes, with sleep and rinse function
Sequencer (programmable frequency/time cycles)	Yes
Preset speeds	Yes
Motorpotentiometer	Yes
Different parameter configuration sets	Yes
Parameters changeover function	Yes
Favorite parameters menu	Yes
Autotuning	No
Safe torque Off (STO) safety function	No
PTC probe input	No
Protections	Overcurrent Output short circuit and earth/ground leakage Overvoltage Undervoltage Phase loss Motor heat overload (i2t) Overspeed Speed reverse
Special funct.	Multi-pump PID control (1 main pump frequency regulated + 2 auxiliary pumps activated in direct mode in case of necessity)
<b>Input and Output</b>	
Number of digital input	Nr. 5
Digital input type	Selectable PNP or NPN logic
Number of digital output	Nr. 2

Digital output arrangement				1 relay output with changeover contact (C/O-SPDT) + 1 digital output	
Output contacts ratings				Relay output: 3A 250VAC Digital output: 100mA max 30VDC	
Number of analog input			Nr.	2	
Analog input type			Analog input 1: configurable 0/2...10VDC, 0...5VDC, 0/4...20mA Analog input 2: configurable 0/2...10VDC or 0...5VDC		
Number of analog output			Nr.	1	
Analog output type			configurable as 0...10VDC, 0...5VDC, 2...10VDC, 0/4...20mA		
Ambient conditions					
Temperature					
Operating temperature		min	°C	-10	
				max	°C
Current derating		2.5%/°C over 40°C			
Storage temperature		min	°C	-25	
				max	°C
Relative humidity			%		
Max altitude			m	4000m (over 1000m derate the rated current by 5%/1000m)	
Maximum Pollution degree			2		
Overvoltage category			III up to 2000m altitude (II above 2000m)		
Housing					
Installation position			Vertical		
IP degree of protection			IP20		
Dimensions (W x H x D)			mm	60 x 281 x 130	
Weight			Kg	1.35	
Dimensions					



## Wiring diagrams



## Certifications and compliance

### Compliance

CSA 22.2 No. 274

EN 61800-5-1

UL61800-5-1

### Certificates

cULus

EAC

RCM

## ETIM classification

ETIM 8.0

EC001857 -  
Frequency  
converter =< 1 kW