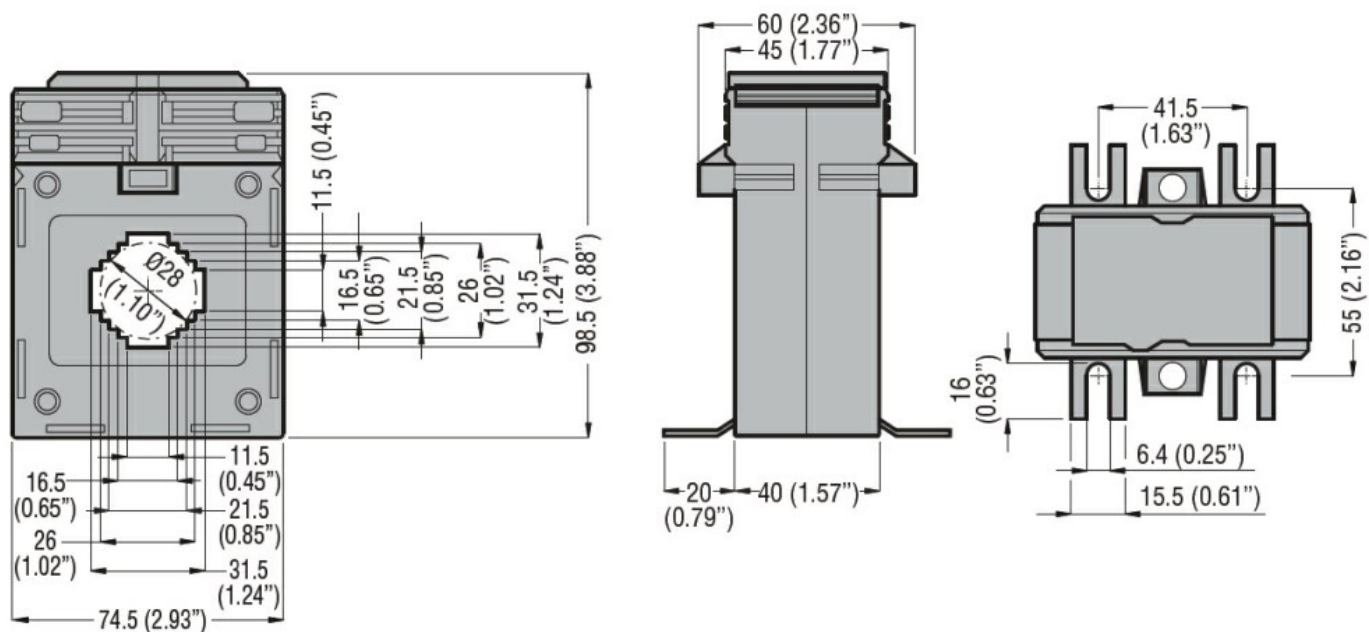




Product designation			Current transformers	
Product type designation			DM1TP0100	
Type of CT			Solid-core	
Current inputs				
Primary current I <sub>pn</sub> (/5)			A	100
Operational frequency			min	Hz
			max	Hz
Secondary output current			A	5
Overload withstand I <sub>pn</sub>			%	120
Burden			cl. 0.5s	VA
			cl. 0.5	VA
Insulations				
Rated insulation voltage U <sub>i</sub> IEC/EN			V	720
IEC rated short-time thermal current I <sub>th</sub>			I <sub>th</sub> for s	40...60
IEC rated dynamic current I <sub>dyn</sub>			I <sub>th</sub> for s	2.5
Insulation dry type			Class E	
Mechanical features				
Terminals type			Screw	
Fixing			DIN rail or by Screw	
Weight			g	480
Ambient conditions				
Temperature			Operating temperature	
			min	°C
			max	°C
Storage temperature			min	°C
			max	°C
Relative humidity			%	90
Protection degree			IP30	
Dimensions				



## Certifications and compliance

### Certifications

IEC/EN/BS 61869-1

IEC/EN/BS 61869-2

### Compliance

EAC

### ETIM classification

EC000066 - Power contactor, AC switching

□