



Product designation			Power contactor		
Product type designation			DPBF18		
Contact characteristics					
Number of poles			Nr.	3	
Operational frequency			min	Hz	25
			max	Hz	400
Mechanical features					
Operating position			normal allowable	Vertical plan ±30°	
Fixing			Screw / DIN rail 35mm		
Weight			g	354	
Operations					
Mechanical life			cycles	20000000	
Electrical life			cycles	1600000	
Safety related data					
Performance level B10d according to EN/ISO 13489-1			rated load	cycles	1600000
			mechanical load	cycles	20000000
Mirror contats according to IEC/EN 609474-4-1			yes		
EMC compatibility			yes		
AC coil operating					
Rated AC voltage at 60Hz			V	230	
AC operating voltage			of 60Hz coil powered at 60Hz		
pick-up			min	%Us	80
			max	%Us	110
drop-out			min	%Us	20
			max	%Us	55
AC average coil consumption at 20°C			of 60Hz coil powered at 60Hz		
			in-rush	VA	75
			holding	VA	9
Dissipation at holding ≤20°C 50Hz			W	2.5	
Max cycles frequency					
Mechanical operation			cycles/h	3600	
Operating times					
Average time for Us control			in AC		
Closing NO			min	ms	8

Opening NO	max	ms	24
	min	ms	10
Closing NC	max	ms	20
	min	ms	14
Opening NC	max	ms	28
	min	ms	7
	max	ms	18

UL technical data

Full-load current (FLA) for three-phase AC motor

at 600V A 30

Locked rotor current (LRA)

A 180

Yielded mechanical performance

for single-phase AC motor

110/120V HP 2

230V HP 5

for three-phase AC motor

200/208V HP 7.5

220/230V HP 7.5

460/480V HP 15

575/600V HP 20

General USE

Contactor

AC current A 32

Auxiliary contacts

AC voltage V 600

AC current A 10

DC voltage V 250

DC current A 1

Short-circuit protection fuse, 600V

Standard fault

Short circuit current kA 5

Fuse rating A 100

Fuse class RK5

Contact rating of auxiliary contacts according to UL

A600 - P600

Ambient conditions

Temperature

Operating temperature

min °C -50

max °C 70

Storage temperature

min °C -60

max °C 80

Max altitude

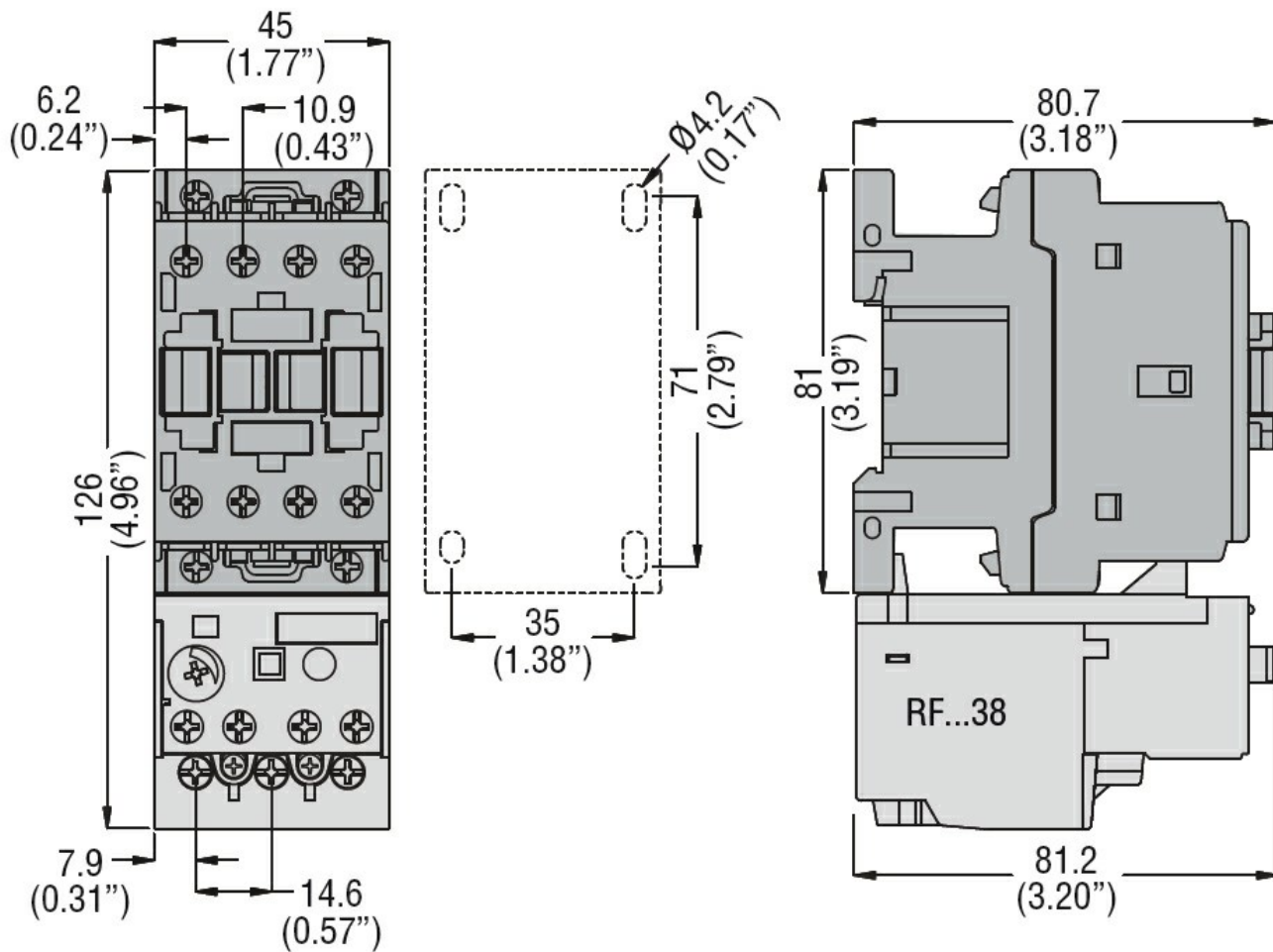
m 3000

Resistance & Protection

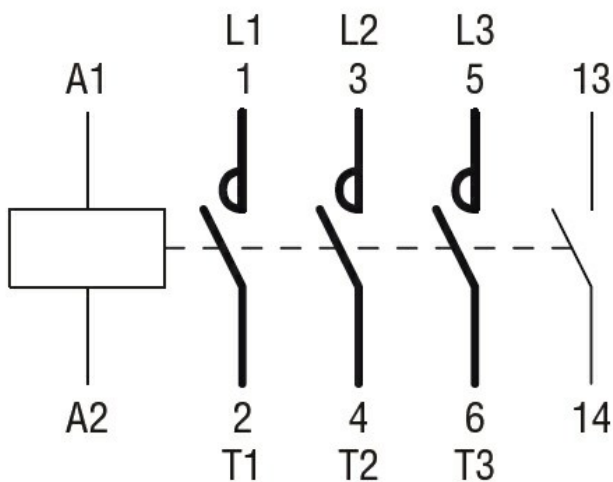
Pollution degree

3

Dimensions



Wiring diagrams



Certifications and compliance

Compliance

CSA C22.2 n° 60947-1

CSA C22.2 n° 60947-4-37

UL 60947-1

UL 60947-4-1

Certificates

cULus

ETIM classification

ETIM 8.0

EC000066 -
Power contactor,
AC switching