



|                                       |  |        |    |   |
|---------------------------------------|--|--------|----|---|
| Product designation                   |  |        |    | Earth leakage relays                                |
| Product type designation              |  |        |    | RC  |
| General characteristics               |  |        |    |   |
| Description                           |  |        |    | Compact, 1 operating threshold                      |
| N° of operating threshold             |  |        |    | 1   |
| Control circuit                       |  |        |    |   |
| Toroidal transformer                  |  |        |    | Incorporated diam. 60mm/2.36"                       |
| Adjustments                           |  |        |    |   |
| Tripping set-point (IΔn)              |  | (x0.1) | A  | 0.025...0.25  |
|                                       |  | (x1)   | A  | 0.25...2.5  |
|                                       |  | (x10)  | A  | 2.5...25  |
| Tripping delay time                   |  | (tx1)  | s  | 0.02...0.5  |
|                                       |  | (tx10) | s  | 0.2...5   |
|                                       |  |        |    |   |
| Selection of multiplier for IΔn and t |  |        |    | By dip switches                                     |
| Resetting                             |  |        |    | Configurable automatic or manual by button on front |
| Test Button                           |  |        |    | On front  |
| Shunt circuit control                 |  |        |    | No  |
| Auxiliary supply                      |  |        |    |   |
| Auxiliary rated supply voltage Us     |  |        |    | 24-48VAC/DC   |
| Output contacts                       |  |        |    | 1   |
| Rated frequency                       |  |        | Hz | 50...60   |
| Power consumption Max                 |  |        | VA | 3   |
| Relay outputs                         |  |        |    |   |
| Relay state                           |  |        |    | Normally de-energised                               |
| Contact arrangement                   |  |        |    | 1 changeover SPDT (trip)                            |
| Rated contact capacity IEC Ith        |  |        |    | 5A - 250VAC   |
| Insulations                           |  |        |    |   |
| Power frequency withstand voltage     |  |        | kV | 2.5kV for 60s                                       |
| Indications                           |  |        |    |   |
| Auxiliary voltage available (ON)      |  |        |    | Green LED   |
| Relay tripping (TRIP)                 |  |        |    | Red LED   |
| Connections                           |  |        |    |   |
| Terminals type                        |  |        |    | Fixed   |
| Tightening torque for terminals       |  |        |    |   |

|                   |           |     |                  |     |
|-------------------|-----------|-----|------------------|-----|
|                   |           | max | Nm               | 0.5 |
|                   |           | max | I <sub>bin</sub> | 4.5 |
| Conductor section |           |     |                  |     |
|                   | AWG/Kcmil |     |                  |     |
|                   |           | min |                  | 24  |
|                   |           | max |                  | 12  |
|                   | IEC       |     |                  |     |
|                   |           | min | mm <sup>2</sup>  | 0.2 |
|                   |           | max | mm <sup>2</sup>  | 2.5 |

#### Operations

Mechanical life cycles 50000000

Electrical life cycles 300000

#### Ambient conditions

Temperature

Operating temperature

|     |    |     |
|-----|----|-----|
| min | °C | -10 |
| max | °C | +60 |

Storage temperature

|     |    |     |
|-----|----|-----|
| min | °C | -20 |
| max | °C | +80 |

Relative humidity % ≤90%

#### Housing

Material Self-extinguishing polycarbonate

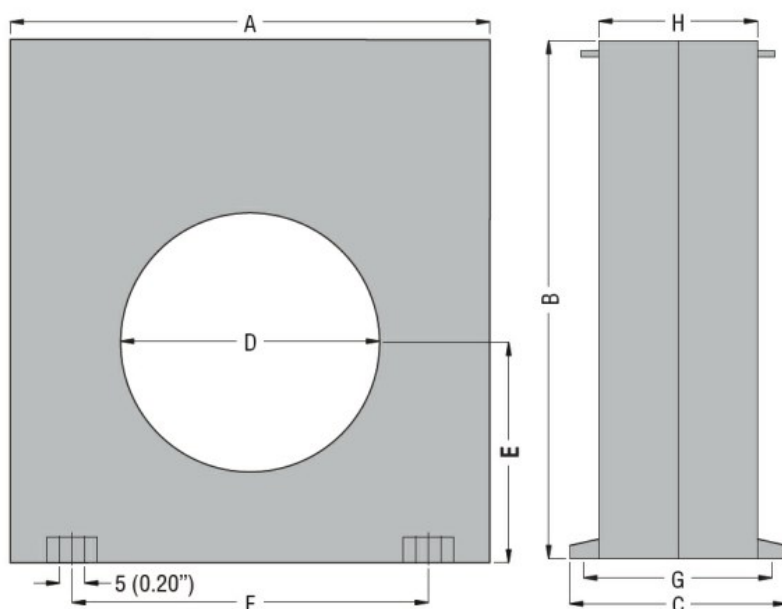
Mounting 35mm DIN rail

Degree of protection IP20 terminals

Dimensions (W x H x D) mm 100x110x70

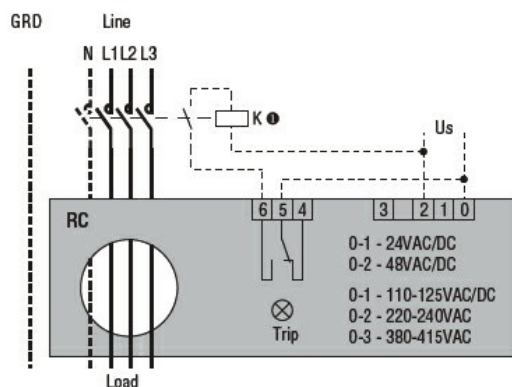
Weight g 485

#### Dimensions



| TYPE  | A           | B           | C          | D           | E          | F           | G          | H          |
|-------|-------------|-------------|------------|-------------|------------|-------------|------------|------------|
| RC35  | 100 (3.94") | 110 (4.33") | 70 (2.75") | 35 (1.38")  | 47 (1.85") | 60 (2.36")  | 60 (2.36") | 50 (1.97") |
| RC60  | 100 (3.94") | 110 (4.33") | 70 (2.75") | 60 (2.36")  | 47 (1.85") | 60 (2.36")  | 60 (2.36") | 50 (1.97") |
| RC80  | 150 (5.90") | 160 (6.30") | 70 (2.75") | 80 (3.15")  | 70 (2.75") | 110 (4.33") | 60 (2.36") | 50 (1.97") |
| RC110 | 150 (5.90") | 160 (6.30") | 70 (2.75") | 110 (4.33") | 70 (2.75") | 110 (4.33") | 60 (2.36") | 50 (1.97") |

## Wiring diagrams



## Certifications and compliance

Compliant with standards

IEC/EN 60947-2

Certificates

EAC

## ETIM classification

ETIM 8.0

EC001445 -  
Residual current  
monitoring relay