



Product designation

MINIATURE
RELAYS
HR502C

Product type designation

Contact characteristics

| | | | |
|--|----|--|-------|
| Contact configuration | | | 2 C/O |
| Rated insulation voltage U_i IEC/EN | V | | 250 |
| Rated impulse withstand voltage U_{imp} | kV | | 6 |
| IEC Conventional free air thermal current I_{th} | A | | 8 |
| Maximum instantaneous current | A | | 10 |
| Rated current (I_n) | A | | 8 |
| Relay control voltage | V | | 24VAC |
| Max contrallable power in | | | |

| | | |
|-------|----|------|
| AC-1 | W | 2000 |
| AC-15 | VA | 150 |

Rated operating power AC-1

| | |
|----|------|
| VA | 2000 |
|----|------|

Rated operating power AC-15

| | | |
|---------|----|-----|
| 230 VAC | VA | 150 |
|---------|----|-----|

Rated operating current DC-1

| | | |
|------|---|-----|
| 30V | A | 8 |
| 110V | A | 0.3 |
| 220V | A | 0.1 |

| | | |
|------------------------|--------|---------|
| Minimum switching load | V / mA | 5 / 100 |
| Contact impedance | mΩ | 100 |
| Contact material | | Ag/Ni |

Operating times

| | | |
|---------|----|-----|
| Closing | ms | <15 |
| Opening | ms | <15 |

Operations

| | | |
|---------------------|--------|----------|
| Mechanical life | cycles | 10000000 |
| Electrical life AC1 | cycles | 50000 |

Coil characteristics

| | | |
|-------------------------------------|----|-----|
| Average coil consumption AC at 20°C | VA | 1 |
| Average coil consumption DC at 20°C | W | 0.4 |

Operating range

| | | |
|---------|---------|----------|
| Closing | % U_n | 70...110 |
| Opening | % U_n | 20...55 |

| | | |
|-------------------------|----------|------|
| Maximum cycle frequency | cycles/h | 3600 |
|-------------------------|----------|------|

Mechanical features

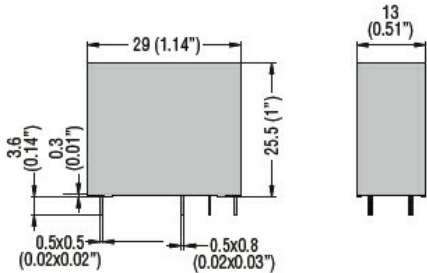
| | | |
|---|----|-------------|
| Max socket terminal tightening torque | Nm | 0.6 |
| Socket screw tightening tool (cross / flat blade) | | PH1 / 4.5mm |

Conductor section

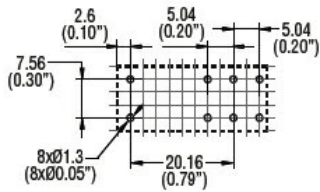
AWG/Kcmil

| | |
|-----|----|
| min | 20 |
| max | 14 |

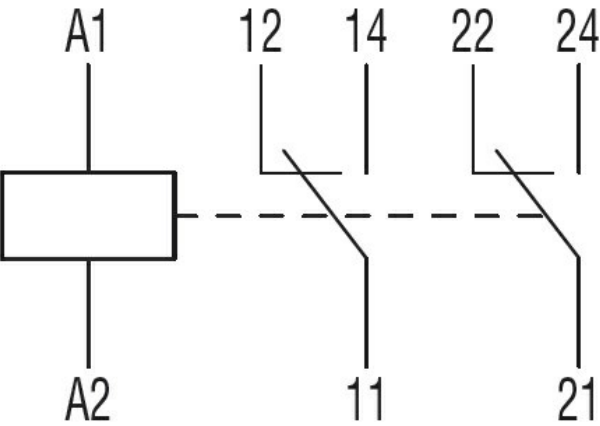
| | | | | |
|---------------------------------------|--|---------------------------------|-----------------|-----|
| IEC | | min | mm ² | 0.5 |
| | | max | mm ² | 2.5 |
| Operating position | | normal | | Any |
| Fixing | | On 35mm DIN rail and with screw | | |
| Ambient conditions | | | | |
| Temperature | | | | |
| Operating temperature | | min | °C | -40 |
| | | max | °C | +70 |
| Storage temperature | | min | °C | -40 |
| | | max | °C | +85 |
| Other features | | | | |
| Indication | | Yes | | |
| Mechanical contact position indicator | | Yes | | |
| Mechanical test actuator | | Yes | | |
| Dimensions | | | | |



PCB layout



Wiring diagrams



Certifications and compliance

Compliance

IEC/EN 61810

Certificates

CSA

cURus

EAC

VDE

ETIM classification

ETIM 8.0

EC001437 -
Switching relay