



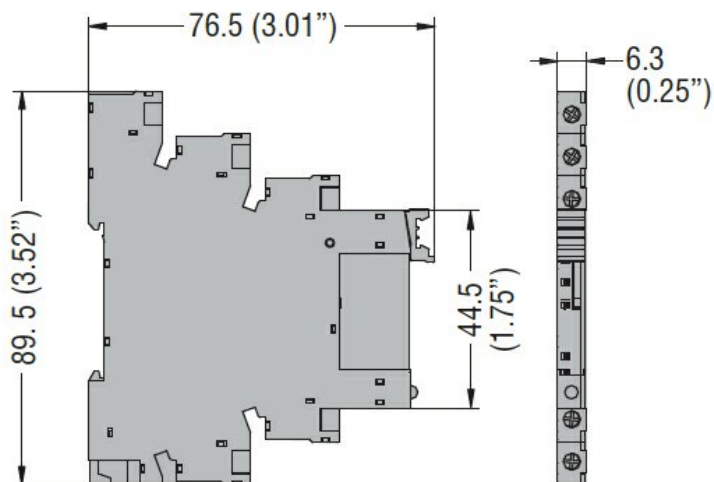
Product designation			SLIM
Product type designation			RELAY+SOCKET
			HRA101
Contact characteristics			
Contact configuration			1 C/O
Rated insulation voltage Ui IEC/EN	V		250
Rated impulse withstand voltage Uimp	kV		4
IEC Conventional free air thermal current Ith	A		6
Maximum instantaneous current	A		20 (500ms)
Rated current (In)	A		6
Relay control voltage	V		24VAC/VDC
UL/CSA and IEC/EN 60947-5-1 designation			B300 – R300
UL rating			6A 277VAC; 6A 30VDC
Max contrrollable power in			
	AC-1	W	1500
	AC-15	VA	360
Rated operating power AC-1			
		VA	1500
Rated operating power AC-15			
	230 VAC	VA	360
Single-phase motor control			
	230VAC	kW	0.186
Rated operating current DC-1			
	30V	A	6
	110V	A	0.2
	220V	A	0.12
Minimum switching load		V / mA	5 / 100
Contact impedance		mΩ	100
Contact material			Ag/Ni
Operating times			
Closing		ms	≤8
Opening		ms	≤4
Operations			
Mechanical life		cycles	10000000
Electrical life AC1		cycles	30000
Coil characteristics			
Relay control voltage + socket		V	24VAC/DC
Average coil consumption DC at 20°C		W	0.2
Operating range			
	Closing	% Un	≥75
	Opening	% Un	≥5
Maximum cycle frequency		cycles/h	10000
Mechanical features			
Max socket terminal tightening torque		Nm	0.5

Socket screw tightening tool (cross / flat blade)				PH0 / 3.5mm	
Conductor section					
AWG/Kcmil		min		20	
		max		16	
IEC		min		mm ²	0.5
		max		mm ²	1.5
Operating position					
		normal		Any	
Fixing				On 35mm DIN rail	
Ambient conditions					
Temperature					
Operating temperature		min		°C	-40
		max		°C	+70
Storage temperature		min		°C	-40
		max		°C	+80

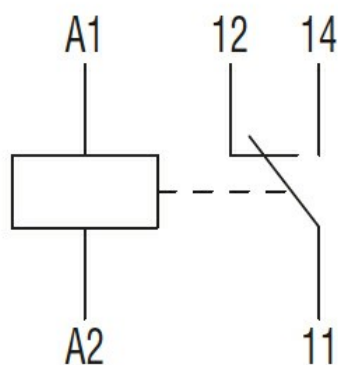
Other features

Indication	Yes (on the socket)
Mechanical contact position indicator	No
Mechanical test actuator	No

Dimensions



Wiring diagrams



Certifications and compliance

Compliance

IEC/EN 61810

Certificates

cURus

EAC

VDE

ETIM classification

ETIM 8.0

EC001437 -
Switching relay