



Interface protection system units compliant with italian standard CEI 0-21 PMVF52

Product designation

Product type designation

General characteristics

Description

System with or without neutral in low voltage. Dual threshold minimum and maximum voltage and frequency protection.

Type of system

Three-phase with/without neutral / Single-phase

Power supply

Operating voltage range

21...264VAC / 21...264VDC

Rated frequency

Hz 45...55

Power consumption Max

VA 6.2

Power dissipation Max

W 2

Auxiliary supply

Rated auxiliary supply voltage Us

AC

min	VAC	24
Max	VAC	240

DC

min	VDC	24
Max	VDC	240

Power consumption

AC (Max)

VA	2.5VA at 24VAC; 6.2VA at 240VAC
----	------------------------------------

DC (Max)

VA	60mA at 24VDC; 7mA at 240VDC
----	---------------------------------

Power dissipation

AC (Max)

W	1.6W at 24VAC; 2W at 240VAC
---	-----------------------------

DC (Max)

INTERFACE PROTECTION UNIT COMPLIANT WITH ITALIAN STANDARD CEI 0-21, FOR SINGLE-PHASE AND THREE-PHASE SYSTEM, WITH OR WITHOUT NEUTRAL, IN LOW VOLTAGE, DUAL THRESHOLD MINIMUM AND MAXIMUM VOLTAGE AND FREQUENCY PROTECTION, 230VAC - 400VAC

	W	1.5W at 24VDC; 1.7W at 240VDC
Immunity time for microbreakings	ms	240VAC 50Hz ≤2000ms 240VDC ≤1000ms 24VAC 50Hz ≤30ms 24VDC ≤15ms

Voltage inputs

Maximum rated operational voltage		400VAC L-L; 230VAC L-N 50Hz
Measurement range	V	40...480VAC L-L; 23...277VAC L-N
Frequency range	Hz	45...55

Relay outputs

Number of relays	Nr.	3
Contact arrangement		2 changeover contact/SPDT each + 1NO
Rated operational voltage AC (IEC)	VAC	250
UL/CSA and IEC/EN 60947-5-1 designation		For OUT1-OUT2 contact: 8A 250VAC AC1/C300, 8A 30VDC For OUT3 contact: 2A 250VAC AC1/C300; 2A 30VDC

Digital inputs

Number and type of inputs		5 to be used with dry contact with common.
Input voltage		12VDC isolated
Input current	mA	6

Connections

Terminals type		Screw - removable
Tightening torque for terminals	max max	Nm lbin 0.8 4.5
Conductor cross section	AWG/Kcmil	min Max AWG AWG 24 12
	IEC	min Max mm ² mm ² 0.2 4

Insulations

Rated insulation voltage Ui	V	300
-----------------------------	---	-----

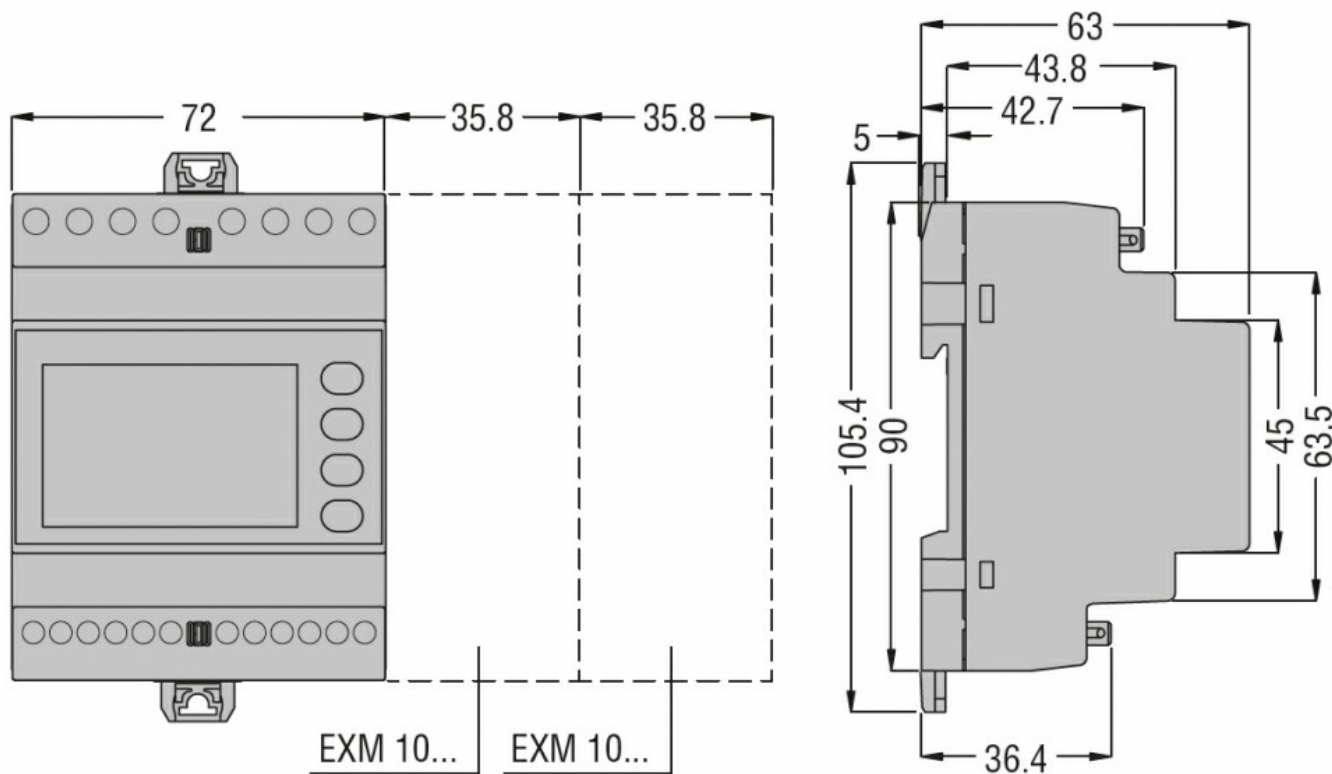
Housing

Execution (n° of modules)		4
Material		Polyamide

INTERFACE PROTECTION UNIT COMPLIANT WITH ITALIAN STANDARD CEI 0-21, FOR SINGLE-PHASE AND THREE-PHASE SYSTEM, WITH OR WITHOUT NEUTRAL, IN LOW VOLTAGE, DUAL THRESHOLD MINIMUM AND MAXIMUM VOLTAGE AND FREQUENCY PROTECTION, 230VAC - 400VAC

Mounting	Modular 4U	
IEC degree of protection	IP40 on front; IP20 at terminals	
Dimensions (W x H x D)	mm	71.6 x 105.4 x 63
Weight	g	326

Dimensions

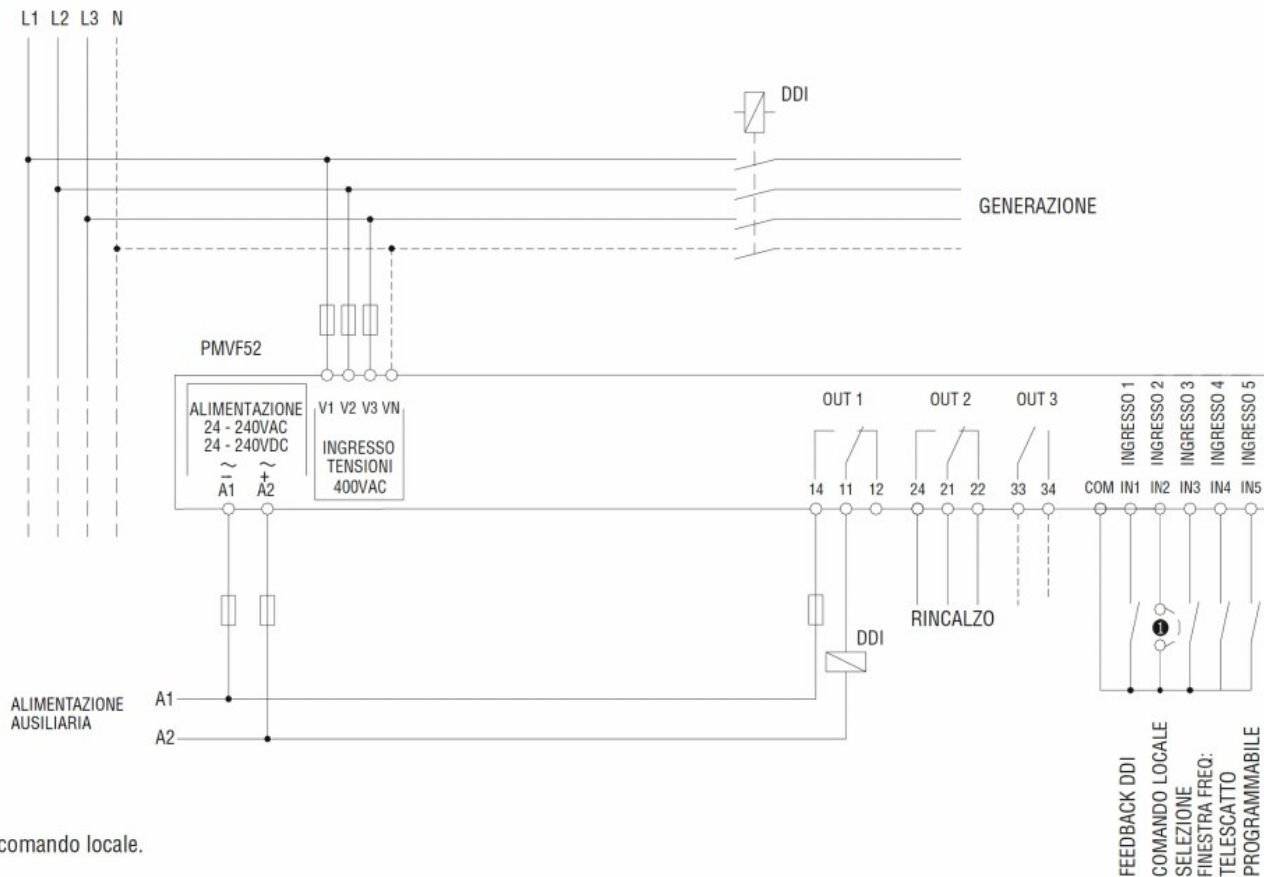


Wiring diagrams

INTERFACE PROTECTION UNIT COMPLIANT WITH ITALIAN STANDARD CEI 0-21, FOR SINGLE-PHASE AND THREE-PHASE SYSTEM, WITH OR WITHOUT NEUTRAL, IN LOW VOLTAGE, DUAL THRESHOLD MINIMUM AND MAXIMUM VOLTAGE AND FREQUENCY PROTECTION, 230VAC - 400VAC

Collegamento trifase

RETE DI DISTRIBUZIONE IN BASSA TENSIONE



① Scelta comando locale.

Certifications and compliance

Compliance

IEC/EN/BS 60255-27
IEC/EN/BS 61000-6-2
IEC/EN/BS 61000-6-4
IEC/EN/BS 61010-1

Certificates

CEI 0-21

ETIM classification

ETIM 8.0

EC001438 -
Voltage
monitoring relay