

ENCLOSED AUTOMATIC TRANSFER SWITCHES ATS



 **Lovato**
electric

ENERGY AND AUTOMATION

ENCLOSED AUTOMATIC TRANSFER SWITCHES ATS

The ATP series of enclosed automatic transfer switches are provided in IP65 metallic enclosure, complete with **ATL 600** automatic transfer switch controller, BF series **four-pole contactors**, dual power supply module type **ATL DPS1** and P1 MB miniature circuit breakers (MCB) for the protection of the measuring lines. They are used for the automatic or manual switching of the load between "MAIN LINE" and "SECONDARY LINE" (eg. generator set). They are available in versions from 45 to 160A AC1 in four-pole configuration.

CONTROL FUNCTIONS OF THE LINES

- phase sequence and phase loss;
- minimum and maximum voltage;
- voltage asymmetry;
- minimum and maximum frequency.



Dual power supply module type ATL DPS1



MCBs for the protection of the measuring lines P1 MB series (1A C curve C 10kA)



Four-pole interlocked contactors BF series

- 4 poles;
- 230V coil;
- electrical and mechanical interlock.



Terminal blocks



Automatic transfer switch controllers type ATL 600

- set for the contactors management and command of the generator set **1**;
- 5 languages (English, Italian, French, Spanish, German);
- programmable alarms;
- control functions of the line, each one with independent controls and timing;
- internal memory records up to 100 events;
- the backlit graphic LCD display enables the user to check: system status, voltage and frequency measurements, statistical data, control thresholds and pop-up windows for alarms.

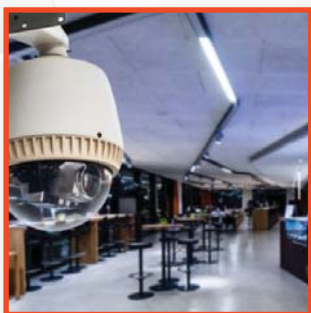


Enclosure

- metallic enclosure RAL 7035 painted;
- flanges for cable entries in the top and bottom sides;
- PVC locking system with double-comb tool insert;
- opening with left hinges;
- IEC degree of protection: IP65;
- compact dimensions.

1 Power sources, as utility or generator set, can be independently defined by end user.

Application fields



SAFETY



INDUSTRIAL



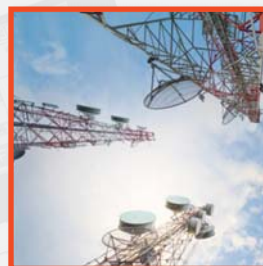
DATA CENTER



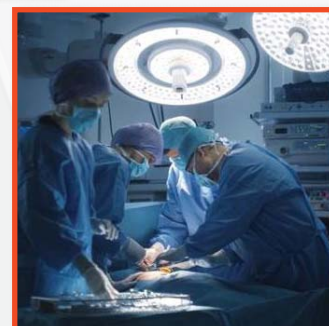
COMMERCIAL



EMERGENCY



TELECOMMUNICATIONS



HOSPITAL



AUXILIARY TRANSPORT SERVICES



Operational characteristics

- **Complete wired ATS ready for connection**
 - **Suitable for low voltage 230/400VAC systems**
 - auxiliary supply voltage: 230VAC (taken from the input lines).
 - **Voltage measurement inputs:**
 - rated voltage U_e : 100...480VAC (L-L);
 - rated voltage U_e : 50...576VAC (L-L);
 - frequency range: 45...65Hz.
 - **6 programmable digital inputs**
 - **7 programmable relay outputs:**
 - 6 each with 1 normally open contact (NO-SPST) rated 8A 250VAC;
 - 1 with 1 changeover contact (NO/NC – SPDT) rated 8A 250VAC.
- Compliant with standards:**
IEC 60947-6-1 and IEC 60947-4-1.

Order codes



Codes	Operating current AC1 [A]	Power (230V) [kVA]	Power (400V) [kVA]	Dimensions (HxWxD) [mm]
Auxiliary supply 230VAC, with four-pole contactors versions.				
ATP 0045 T4 A230 C 600 A	45	10	31	500x400x200
ATP 0060 T4 A230 C 600 A	60	14	42	500x400x200
ATP 0080 T4 A230 C 600 A	80	18	55	500x400x200
ATP 0100 T4 A230 C 600 A	100	23	69	500x400x200
ATP 0125 T4 A230 C 600 A	125	29	87	600x400x200
ATP 0160 T4 A230 C 600 A	160	37	111	600x400x200

■ **LOVATO ELECTRIC LTD**

Lovato House - Providence Drive Lye
STOURBRIDGE
West Midlands - DY9 8HQ - ENGLAND
Tel. +44 01384 899700
sales@Lovato.co.uk
www.Lovato.co.uk

■ **LOVATO ELECTRIC GmbH**

Im Ermlisgrund 30
76337 WALDBRONN
GERMANY
Tel. +49 7243 766 937 0
info@LovatoElectric.de
www.LovatoElectric.de

■ **LOVATO ELECTRIC SP. Z O.O.**

ul. Zachodnia 3
55-330 Błonie k. Wrocławia
POLAND
Tel. +48 71 7979010
info@LovatoElectric.pl
www.LovatoElectric.pl

■ **ООО Ловато Электрик**

107023, г. Москва
ул. Суворовская, д.19, стр. 2,
RUSSIA
Тел: +7 (495) 998-50-80
info@LovatoElectric.ru
www.LovatoElectric.ru

■ **LOVATO ELECTRIC SAS**

IMMEUBLE DANICA B
21 Avenue Georges Pompidou
FRANCE
Tel. +33 4 72 91 31 35
info@LovatoElectric.fr
www.LovatoElectric.fr

■ **LOVATO ELECTRIC CORPORATION**

4500, Garand Street
Laval, Quebec CANADA
H7L 5Z6
Tel. +579-641-1253
info@Lovato.ca
www.Lovato.ca

■ **LOVATO ELECTRIC S.L.U**

Pol. Ind. Llinars Park
C/. de la Tecnología, 102
Passatge B, Nau 9
08450 LLINARS DEL VALLÈS - SPAIN
Tel. +34 93 7812016
LovatoElectric@LovatoElectric.es
www.LovatoElectric.es

■ **LOVATO ELEKTRIK LTD**

Araylar Sanayi Sitesi
No:9A/36 Özvatan Caddesi
Tepeören Mahallesi 34959 Tuzla
Istanbul, TURKEY
Tel. +90 216 499 86 86
info@LovatoElectric.com.tr
www.LovatoElectric.com.tr

■ **LOVATO ELECTRIC CO LTD**

Shanghai, CHINA
上海市虹井路288号燎申虹桥国
际中心B座701单元
邮编: 201103
电话: +86 021 62961837
info@LovatoElectric.cn
www.LovatoElectric.cn

■ **LOVATO ELECTRIC INC**

2017 Georgetown Blvd.
CHESAPEAKE, VA 23325
UNITED STATES
Tel. +1 757 545-4700
info@LovatoUsa.com
www.LovatoUsa.com

■ **LOVATO ELECTRIC. S.R.O.**

Cizovska 488
397 01 PISEK
CZECH REPUBLIC
Tel. +420 226 203210
Lovato@LovatoElectric.cz
www.LovatoElectric.cz

■ **LOVATO ELECTRIC ME FZE**

#A101-9, First Floor, Block A
DSO-Operations and Facility Centre
DUBAI SILICON OASIS
Dubai, UAE
Tel. +971 4 371 2713
info@lovatoelectric.ae
www.LovatoElectric.ae

■ **LOVATO ELECTRIC SRL**

Muntenia Business Center,
Splaiul Unirii nr. 16, et. 6, cam. 601
RO-040035, sector 4,
Bucarest, ROMANIA
Tel. +40 372 074 155
info@LovatoElectric.ro
www.LovatoElectric.ro



ENERGY AND AUTOMATION

www.LovatoElectric.com

LOVATO ELECTRIC S.P. A.

via Don E. Mazza, 12
24020 Gorle (Bergamo) Italy
tel +39 035 4282111
info@LovatoElectric.com

Follow us



The products described in this publication are subject to be revised or improved at any moment. Catalogue descriptions and details, such as technical and operational data, drawings, diagrams and instructions, etc., do not have any contractual value. In addition, products should be installed and used by qualified personnel and in compliance with the regulations in force for electrical systems in order to avoid damages and safety hazards.