



Product designation			LATCHING RELAY		
Product type designation			CNB		
Operating voltage type			AC		
Manual control			YES		
Number of poles			2		
Number of DIN modules			1		
Electrical features					
IEC Conventional free air thermal current Ith			A	20	
Rated insulation voltage Ui IEC/EN			V	440	
Rated impulse withstand voltage Uimp			kV	4	
Minimum switching capacity			≥10V ≥100mA		
Power dissipation per pole (average value) Ith			W	1.7	
Control circuit					
Auxiliary rated supply voltage Us			230VAC		
Auxiliary contacts			NO	Nr.	2
Average coil consumption ≤20°C			in-rush	W	18/13
Operating voltage					
pick-up			min	%Us	85
			max	%Us	110
Operating times					
Average time					
Closing NO			min	ms	5
			max	ms	20
Opening NO			min	ms	5
			max	ms	20
Operations					
Mechanical life			cycles	3000000	
Electrical life AC-3			cycles	300000	
Electrical life AC1			cycles	200000	
Ambient conditions					
Operating temperature			min	°C	-5
			max	°C	55
Storage temperature			min	°C	-30
			max	°C	80
Max altitude			m	2000	
Mechanical features					
Fixing			DIN rail 35mm		

Tightening torque for coil terminal

max	Nm	0.6
max	lbin	0.6

Tightening torque for terminals

max	Nm	1.2
max	lbin	0.9

Conductor section

Coil terminal

min	mm ²	1
max	mm ²	2.5

Power terminal

min	mm ²	1
max	mm ²	10

Terminals tool

PZ2

Weight

g 135

Resistance & Protection

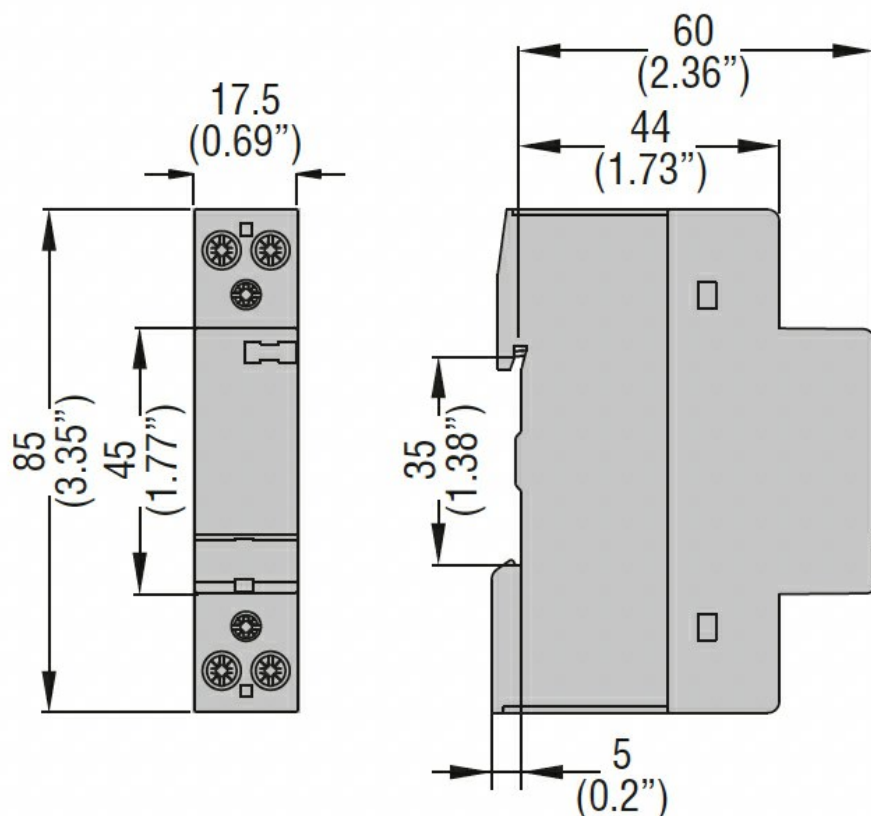
Frontal IP degree

IP20

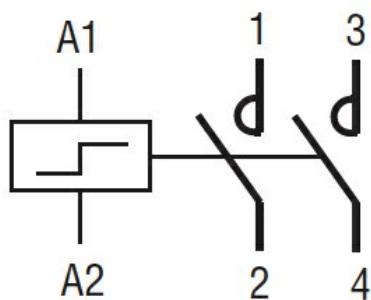
Pollution degree

3

Dimensions



Wiring diagrams



Certifications and compliance

Compliance

IEC/EN/BS 60669-1
IEC/EN/BS 60669-2-2
IEC/EN/BS 60947-1
IEC/EN/BS 60947-4-1
IEC/EN/BS 60947-5-1
IEC/EN/BS 61095

Certificates

EAC

ETIM classification

ETIM 8.0

EC000066 -
Power contactor,
AC switching