



Product designation

SLIM
RELAY+SOCKET
HRA101

Product type designation

Contact characteristics

Contact configuration		1 C/O
Rated insulation voltage U_i IEC/EN	V	250
Rated impulse withstand voltage U_{imp}	kV	4
IEC Conventional free air thermal current I_{th}	A	6
Maximum instantaneous current	A	20 (500ms)
Rated current (I_n)	A	6
Relay control voltage	V	24VAC/VDC
UL/CSA and IEC/EN 60947-5-1 designation		B300 – R300
UL rating		6A 277VAC; 6A 30VDC

Max contrrollable power in

	AC-1	W	1500
	AC-15	VA	360
Rated operating power AC-1		VA	1500
Rated operating power AC-15	230 VAC	VA	360
Single-phase motor control	230VAC	kW	0.186

Rated operating current DC-1

	30V	A	6
	110V	A	0.2
	220V	A	0.12

Minimum switching load	V / mA	5 / 100
Contact impedance	mΩ	100
Contact material		Ag/Ni

Operating times

Closing	ms	≤8
Opening	ms	≤4

Operations

Mechanical life	cycles	10000000
Electrical life AC1	cycles	30000

Coil characteristics

Relay control voltage + socket	V	24VAC/DC
Average coil consumption DC at 20°C	W	0.2

Operating range

	Closing	% U_n	≥75
	Opening	% U_n	≥5
Maximum cycle frequency	cycles/h		10000

Mechanical features

Max socket terminal tightening torque	Nm	0.5
---------------------------------------	----	-----

Socket screw tightening tool (cross / flat blade)	PH0 / 3.5mm
---	-------------

Conductor section	
-------------------	--

AWG/Kcmil

min	20
max	16

IEC

min	mm ²	0.5
max	mm ²	1.5

Operating position	
--------------------	--

normal	Any
--------	-----

Fixing	On 35mm DIN rail
--------	------------------

Ambient conditions

Temperature	
-------------	--

Operating temperature

min	°C	-40
max	°C	+70

Storage temperature

min	°C	-40
max	°C	+80

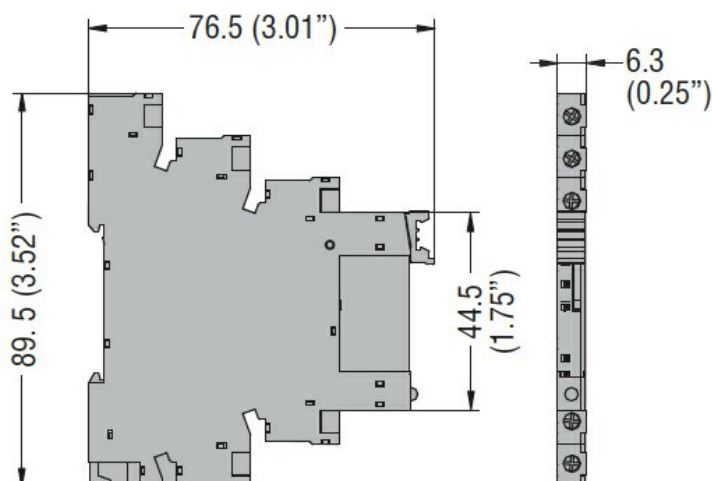
Other features

Indication	Yes (on the socket)
------------	---------------------

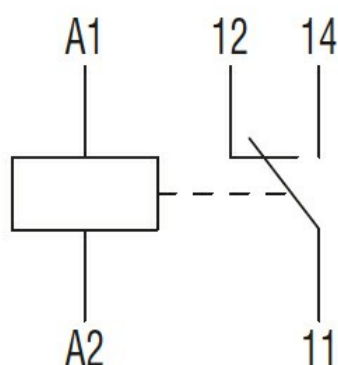
Mechanical contact position indicator	No
---------------------------------------	----

Mechanical test actuator	No
--------------------------	----

Dimensions



Wiring diagrams



Certifications and compliance

Compliance

IEC/EN 61810

Certificates

cURus

EAC

VDE

ETIM classification

ETIM 8.0

EC001437 -
Switching relay