

- Primary current: 5...4000A
- Secondary current: 5A
- Solid and split-core types
- Instrument and accuracy versions
- Wound primary CT for low currents
- Busbar versions.

|   | <b>SEC. - PAGE</b> |
|---|--------------------|
| <b>Current transformers</b>                         |                    |
| Wound primary type .....                            | 29 - 2             |
| Solid-core .....                                    | 29 - 2             |
| Accuracy solid-core .....                           | 29 - 4             |
| Current transformer kit with UTF certificates ..... | 29 - 5             |
| Compact prewired split-core .....                   | 29 - 6             |
| Split-core .....                                    | 29 - 7             |
| <br><b>Dimensions</b> .....                         | <br><b>29 - 8</b>  |



Page 29-2

**WOUND PRIMARY CURRENT TRANSFORMERS**

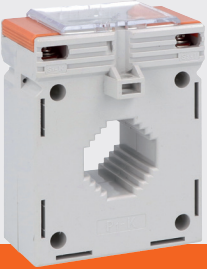
- Primary current 5...30A
- Secondary current 5A
- Screw terminals.



Page 29-2

**SOLID-CORE CURRENT TRANSFORMERS**

- Primary current 40...4000A
- Secondary current 5A
- Busbar versions.



Page 29-4

**ACCURACY SOLID-CORE CURRENT TRANSFORMERS**

- Primary current 60...3000A
- Secondary current 5A
- Accuracy class 0.5s.



Page 29-5

**CURRENT TRANSFORMER KIT WITH UTF CERTIFICATES**

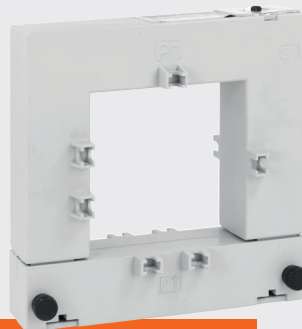
- Primary current 60...3000A
- Secondary current 5A
- Kit consisting of 3 transformers and related UTF certificates (Finance Technical Office).



Page 29-6

**COMPACT PREWIRED SPLIT-CORE CURRENT TRANSFORMERS**

- Primary current 100...600A
- Secondary current 5A
- Compact dimensions
- Cable supplied as standard, length 2m.



Page 29-7

**SPLIT-CORE CURRENT TRANSFORMERS**

- Primary current 100...4000A
- Secondary current 5A.

## Wound primary type



DM0T...

| Order code      | Primary current<br>I <sub>pn</sub> | Burden          |               |               | Qty per pkg | Wt<br>[kg] |
|-----------------|------------------------------------|-----------------|---------------|---------------|-------------|------------|
|                 |                                    | cl. 0.5<br>[VA] | cl. 1<br>[VA] | cl. 3<br>[VA] |             |            |
|                 | /5 [A]                             |                 |               |               | n°          |            |
| <b>DM0T0005</b> | 5                                  | 1.5             | 2.5           | —             | 1           | 0.525      |
| <b>DM0T0010</b> | 10                                 | 1.5             | 2.5           | —             | 1           | 0.525      |
| <b>DM0T0020</b> | 20                                 | 1.5             | 2.5           | —             | 1           | 0.525      |
| <b>DM0T0030</b> | 30                                 | 1.5             | 2.5           | —             | 1           | 0.525      |

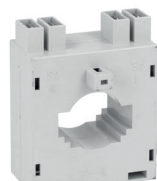
Screw primary terminals.

## Solid-core



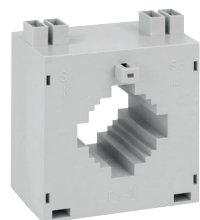
DM0T...

| Order code             | Primary current<br>I <sub>pn</sub> | Burden          |               |               | Qty per pkg | Wt<br>[kg] |
|------------------------|------------------------------------|-----------------|---------------|---------------|-------------|------------|
|                        |                                    | cl. 0.5<br>[VA] | cl. 1<br>[VA] | cl. 3<br>[VA] |             |            |
|                        | /5 [A]                             |                 |               |               | n°          |            |
| For Ø22mm/0.87" cable. |                                    |                 |               |               |             |            |
| <b>DM0T0040</b>        | 40                                 | —               | —             | 1.25          | 1           | 0.200      |
| <b>DM0T0050</b>        | 50                                 | —               | 1.25          | —             | 1           | 0.200      |
| <b>DM0T0060</b>        | 60                                 | —               | 1.5           | —             | 1           | 0.200      |
| <b>DM0T0080</b>        | 80                                 | —               | 1.5           | —             | 1           | 0.200      |
| <b>DM0T0100</b>        | 100                                | —               | 1.5           | —             | 1           | 0.200      |
| <b>DM0T0150</b>        | 150                                | —               | 2             | —             | 1           | 0.200      |



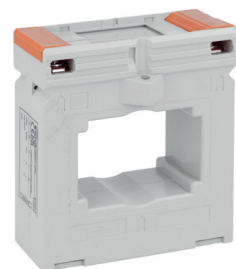
DM2T...

| Order code   | Primary current<br>I <sub>pn</sub> | Burden          |               | Qty per pkg. | Wt<br>[kg] |
|--|------------------------------------|-----------------|---------------|--------------|------------|
|  |                                    | cl. 0.5<br>[VA] | cl. 1<br>[VA] |              |            |
|  | /5 [A]                             |                 |               | n°           |            |
| For Ø23mm/0.90" cable.<br>For 30x10mm/1.18x0.39", 25x12.5mm/0.98x0.49",<br>20x15mm/0.79x0.59" busbars, width 52mm/2.05". |                                    |                 |               |              |            |
| <b>DM2T0100</b>  | 100                                | —               | 1             | 1            | 0.130      |
| <b>DM2T0150</b>  | 150                                | —               | 1.5           | 1            | 0.130      |
| <b>DM2T0200</b>  | 200                                | —               | 2             | 1            | 0.130      |
| <b>DM2T0250</b>  | 250                                | —               | 2.5           | 1            | 0.130      |
| <b>DM2T0300</b>  | 300                                | 1.5             | 3             | 1            | 0.130      |
| <b>DM2T0400</b>  | 400                                | 2               | 3             | 1            | 0.130      |



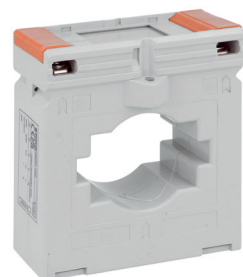
DM3T...

| Order code   | Primary current<br>I <sub>pn</sub> | Burden          |               | Qty per pkg. | Wt<br>[kg] |
|--|------------------------------------|-----------------|---------------|--------------|------------|
|  |                                    | cl. 0.5<br>[VA] | cl. 1<br>[VA] |              |            |
|  | /5 [A]                             |                 |               | n°           |            |
| For Ø30mm/1.18" cable.<br>For 40x10mm/1.57x0.39", 30x20mm/1.18x0.79",<br>25x25mm/0.98x0.98" busbars, width 71mm/2.79". |                                    |                 |               |              |            |
| <b>DM3T0200</b>  | 200                                | —               | 5             | 1            | 0.260      |
| <b>DM3T0250</b>  | 250                                | —               | 5             | 1            | 0.260      |
| <b>DM3T0300</b>  | 300                                | 2.5             | 5             | 1            | 0.260      |
| <b>DM3T0400</b>  | 400                                | 2.5             | 5             | 1            | 0.260      |
| <b>DM3T0500</b>  | 500                                | 2.5             | 5             | 1            | 0.260      |
| <b>DM3T0600</b>  | 600                                | 5               | 10            | 1            | 0.260      |
| <b>DM3T0800</b>  | 800                                | 5               | 10            | 1            | 0.260      |



DM33...

| Order code   | Primary current<br>I <sub>pn</sub> | Burden          |               | Qty per pkg. | Wt<br>[kg] |
|--|------------------------------------|-----------------|---------------|--------------|------------|
|  |                                    | cl. 0.5<br>[VA] | cl. 1<br>[VA] |              |            |
|  | /5 [A]                             |                 |               | n°           |            |
| For Ø44mm/1.73" cable.<br>For 51x41mm/2.01x1.61", 61x31mm/2.40x1.22" busbars,<br>width 95mm/3.74". |                                    |                 |               |              |            |
| <b>DM33T0800</b>   | 800                                | 5               | 10            | 1            | 0.476      |
| <b>DM33T1000</b>   | 1000                               | 5               | 15            | 1            | 0.476      |
| <b>DM33T1200</b>   | 1200                               | 5               | 15            | 1            | 0.476      |



DM34...

| Order code   | Primary current<br>I <sub>pn</sub> | Burden          |               | Qty per pkg. | Wt<br>[kg] |
|--|------------------------------------|-----------------|---------------|--------------|------------|
|  |                                    | cl. 0.5<br>[VA] | cl. 1<br>[VA] |              |            |
|  | /5 [A]                             |                 |               | n°           |            |
| For Ø44mm/1.73" cable.<br>For 69x10mm/2.72x0.39", 50x30mm/1.97x1.18" busbars,<br>width 95mm/3.74". |                                    |                 |               |              |            |
| <b>DM34T1500</b>   | 1500                               | 5               | 15            | 1            | 0.476      |
| <b>DM34T1600</b>   | 1600                               | 5               | 15            | 1            | 0.476      |

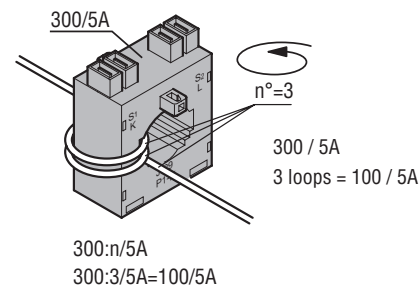
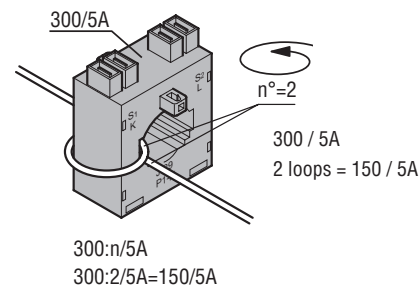
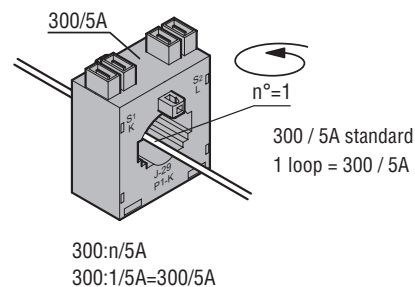
## General characteristics

The current transformers (CTs) in the DM series are installed in an electrical system to reduce the line current to a secondary value of 5A compatible with the ammeter inputs of the digital multimeters or protection relays.

DM0T... are instrument transformers in class 1/0.5 wound primary type and are normally used for low primary current values starting from 5A.

DM... are instrument transformers in class 1/0.5 without a primary winding and are normally used for high primary current values starting from 40A.

The number of loops of the primary cable does not modify the accuracy but converts the primary current value proportional to secondary current.



## Operational characteristics

- Operating frequency: 50...60Hz
- Secondary output current: 5A
- Overload withstand: 120% I<sub>pn</sub>
- IEC rated insulation voltage U<sub>i</sub>: 720V
- IEC rated short-time thermal current I<sub>th</sub>: 40...60 I<sub>pn</sub> for 1 second
- IEC rated dynamic current I<sub>dyn</sub>: 2.5 I<sub>th</sub> for 1 second
- Insulation (dry type): Class E
- Terminals:
  - Faston for DM2T... and DM3T... types
  - Screw for DM0T..., DM33T and DN34T... types
- Sealable terminal covers for DM33T..., DM34T... types
- Fixing on 35mm DIN rail (IEC/EN/BS 60715) or by screws (fixing elements standard supplied with the product)
- EN degree of protection: IP30
- Ambient conditions:
  - Operating temperature: -25...+50°C
  - Storage temperature: -40...+80°C
  - Relative humidity, non condensing: 90%.

## Certifications and compliance

Certifications obtained: EAC.  
Compliant with standards: IEC/EN/BS 61869-2,  
IEC/EN/BS 61869-1.

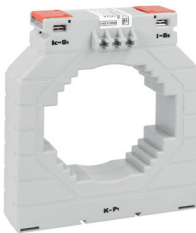
## Solid-core



DM35T...



DM37...



DM4T...

| Order code | Primary current I <sub>pn</sub> | Burden  |       | Qty per pkg | Wt   |
|------------|---------------------------------|---------|-------|-------------|------|
|            |                                 | cl. 0.5 | cl. 1 |             |      |
|            | /5 [A]                          | [VA]    | [VA]  | n°          | [kg] |

For Ø66mm/2.60" cable.  
For 80x12.5mm/3.15"x0.49", 60x30mm/2.36x1.18", 50x50mm/1.97x1.97" busbars, width 105mm/4.13".

|           |      |    |    |   |       |
|-----------|------|----|----|---|-------|
| DM35T0400 | 400  | —  | 5  | 1 | 0.460 |
| DM35T0500 | 500  | 5  | 5  | 1 | 0.460 |
| DM35T0600 | 600  | 5  | 10 | 1 | 0.460 |
| DM35T0800 | 800  | 10 | 15 | 1 | 0.460 |
| DM35T1000 | 1000 | 15 | 20 | 1 | 0.460 |
| DM35T1250 | 1250 | 15 | 20 | 1 | 0.460 |

For 101x56mm/3.98x2.20" busbars, width 128mm/5.04".

|           |      |    |    |   |       |
|-----------|------|----|----|---|-------|
| DM37T2000 | 2000 | 10 | 15 | 1 | 1.000 |
| DM37T2250 | 2250 | 10 | 15 | 1 | 1.000 |
| DM37T2500 | 2500 | 10 | 15 | 1 | 1.000 |
| DM37T3000 | 3000 | 10 | 15 | 1 | 1.000 |

For Ø86mm/3.38" cable.  
For 100x30mm/3.94x1.18", 80x50mm/3.15x1.97", 70x60mm/2.75x2.36" busbars, width 140mm/5.51".

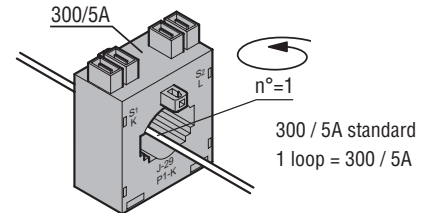
|          |      |    |    |   |       |
|----------|------|----|----|---|-------|
| DM4T1000 | 1000 | 10 | 20 | 1 | 0.700 |
| DM4T1250 | 1250 | 15 | 30 | 1 | 0.760 |
| DM4T1500 | 1500 | 20 | 30 | 1 | 0.760 |
| DM4T1600 | 1600 | 20 | 30 | 1 | 0.800 |
| DM4T2000 | 2000 | 30 | 45 | 1 | 0.840 |
| DM4T2500 | 2500 | 35 | 45 | 1 | 0.900 |
| DM4T3000 | 3000 | 45 | 45 | 1 | 0.900 |
| DM4T3500 | 3500 | 50 | 50 | 1 | 0.900 |
| DM4T4000 | 4000 | 50 | 50 | 1 | 0.900 |

## General characteristics

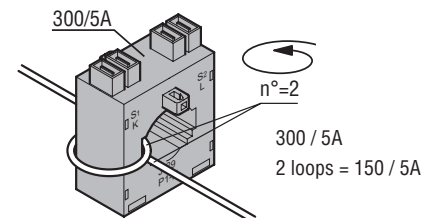
The current transformers (CTs) in the DM series are installed in an electrical system to reduce the line current to a secondary value of 5A compatible with the ammeter inputs of the digital multimeters or protection relays.

DM... are instrument transformers in class 1/0.5 without a primary winding and are normally used for high primary current values starting from 50A.

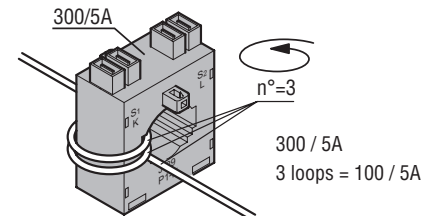
The number of loops of the primary cable does not modify the accuracy but converts the primary current value proportional to secondary current.



300:n/5A  
300:1/5A=300/5A



300:n/5A  
300:2/5A=150/5A



300:n/5A  
300:3/5A=100/5A

## Operational characteristics

- Operating frequency: 50...60Hz
- Secondary output current: 5A
- Overload withstand: 120% I<sub>pn</sub>
- IEC rated insulation voltage U<sub>i</sub>: 720V
- IEC rated short-time thermal current I<sub>th</sub>: 40...60 I<sub>pn</sub> for 1 second
- IEC rated dynamic current I<sub>dyn</sub>: 2.5 I<sub>th</sub> for 1 second
- Insulation (dry type): Class E
- Terminals:
  - Screw for DM35T..., DM37T... and DM4T... types
  - Sealable terminal covers only for DM35T... and DM4T... types
- Fixing on 35mm DIN rail (IEC/EN/BS 60715) or by screws (fixing elements standard supplied with the product)
- EN degree of protection: IP30
- Ambient conditions:
  - Operating temperature: -25...+50°C
  - Storage temperature: -40...+80°C
  - Relative humidity, non condensing: 90%.

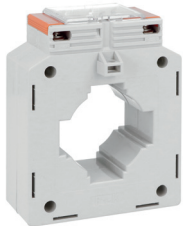
## Certifications and compliance

Certifications obtained: EAC.  
Compliant with standards: IEC/EN/BS 61869-2, IEC/EN/BS 61869-1.

## Accuracy solid-core



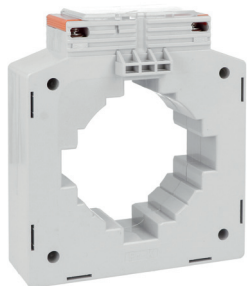
DM1TP...



DM3TP...



DM4TP...



DM5TP...

Version with UTF certificates.  
See page 29-5.

| Order code | Primary current I <sub>pn</sub> | Burden        |              | Qty per pkg | Weight [kg] |
|------------|---------------------------------|---------------|--------------|-------------|-------------|
|            |                                 | cl. 0.5s [VA] | cl. 0.5 [VA] |             |             |

For Ø28mm/1.10" cable.  
For 30x10mm/1.18x0.39", 25x12.5mm/0.98x0.49", 20x20mm/0.79x0.79" busbar, width: 75mm/2.95".

|           |     |     |      |   |       |
|-----------|-----|-----|------|---|-------|
| DM1TP0060 | 60  | 1.5 | 1.5  | 1 | 0.560 |
| DM1TP0080 | 80  | 2.5 | 2.5  | 1 | 0.580 |
| DM1TP0100 | 100 | 2.5 | 3.75 | 1 | 0.480 |
| DM1TP0150 | 150 | 2.5 | 3.75 | 1 | 0.480 |
| DM1TP0200 | 200 | 2.5 | 3.75 | 1 | 0.480 |
| DM1TP0250 | 250 | 2.5 | 5    | 1 | 0.480 |
| DM1TP0300 | 300 | 2.5 | 5    | 1 | 0.480 |
| DM1TP0400 | 400 | 5   | 5    | 1 | 0.480 |
| DM1TP0500 | 500 | 5   | 5    | 1 | 0.480 |

For Ø28mm/1.10" cable.  
For 30x10mm/1.18x0.39", 25x20mm/0.98x0.79", 20x20mm/0.79x0.79" busbar, width: 75mm/2.95".

|           |     |     |   |   |       |
|-----------|-----|-----|---|---|-------|
| DM1TP0600 | 600 | 2.5 | 5 | 1 | 0.480 |
|-----------|-----|-----|---|---|-------|

For Ø52mm/2.04" cable.  
For 60x20mm/2.36x0.79", 50x25mm/1.97x0.98" busbar, width: 101mm/3.98".

|           |      |      |    |   |       |
|-----------|------|------|----|---|-------|
| DM3TP0500 | 500  | 3.75 | 5  | 1 | 0.700 |
| DM3TP0600 | 600  | 5    | 10 | 1 | 0.700 |
| DM3TP0800 | 800  | 5    | 10 | 1 | 0.700 |
| DM3TP1000 | 1000 | 5    | 10 | 1 | 0.700 |

For Ø80mm/3.15" cable.  
For 82x30mm/3.23x1.18" busbar, width: 128mm/5.04".

|           |      |   |    |   |       |
|-----------|------|---|----|---|-------|
| DM4TP1200 | 1200 | — | 10 | 1 | 0.800 |
|-----------|------|---|----|---|-------|

For Ø85.5mm/3.37" cable.  
For 100x20mm/3.94x0.79", 80x45mm/3.15x1.77" busbar, width: 144mm/5.67".

|           |      |     |    |   |       |
|-----------|------|-----|----|---|-------|
| DM5TP1000 | 1000 | 5   | 10 | 1 | 0.900 |
| DM5TP1250 | 1250 | 7.5 | 10 | 1 | 0.900 |
| DM5TP1600 | 1600 | 7.5 | 10 | 1 | 0.900 |
| DM5TP2000 | 2000 | 10  | 15 | 1 | 0.900 |
| DM5TP2500 | 2500 | 10  | 15 | 1 | 0.900 |
| DM5TP3000 | 3000 | 10  | 15 | 1 | 0.900 |

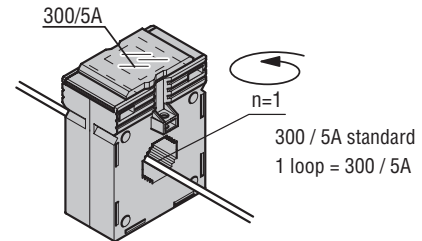
Consult Technical support to inquiry about versions with Italian UTF certificates.

## General characteristics

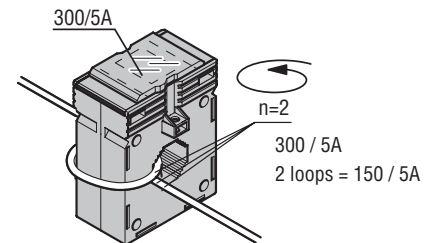
The DM...TP type accuracy current transformers (CTs) are installed in an electrical system to reduce the line current to a secondary value of 5A compatible with the ammeter inputs of the digital multimeters or protection relays.

DM...TP are accuracy current transformers in class 0.5s without a primary winding and are normally used for high primary current values starting from 60A.

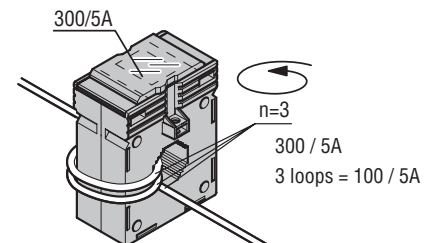
The number of loops of the primary cable does not modify the accuracy but converts the primary current value proportional to secondary current.



300:n/5A  
300:1/5A=300/5A



300:n/5A  
300:3/5A=100/5A



300:n/5A  
300:3/5A=100/5A

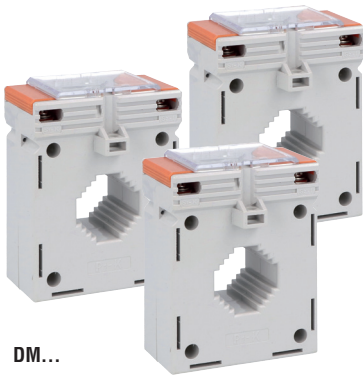
## Operational characteristics

- Operating frequency: 50...60Hz
- Secondary output current: 5A
- Overload withstand: 120% I<sub>pn</sub>
- IEC rated insulation voltage U<sub>i</sub>: 720V
- IEC rated short-time thermal current I<sub>th</sub>: 40...60 I<sub>pn</sub> for 1 second
- IEC rated dynamic current I<sub>dyn</sub>: 2.5 I<sub>th</sub> for 1 second
- Insulation (dry type): Class E
- Screw terminals
- Sealable terminal covers
- Fixing on 35mm DIN rail (IEC/EN/BS 60715) or by screws (fixing elements standard supplied with the product)
- EN degree of protection: IP30
- Ambient conditions:
  - Operating temperature: -25...+50°C
  - Storage temperature: -40...+80°C.
  - Relative humidity, non condensing: 90%.

## Certifications and compliance

Certifications obtained: EAC.  
Compliant with standards: IEC/EN/BS 61869-2, IEC/EN/BS 61869-1.

## Current transformer kit with UTF certificates



| Order code | Description of CTs included | Qty           | Wt   |
|------------|-----------------------------|---------------|------|
|            |                             | per pkg<br>n° | [kg] |

Kit comprising of three /5A and class 0.5s current transformers.

|                      |  |   |       |
|----------------------|--|---|-------|
| <b>DM1TP0060FKIT</b> | 3 DM1TP0060, complete with UTF certificate | 1 | 1.440 |
| <b>DM1TP0080FKIT</b> | 3 DM1TP0080, complete with UTF certificate | 1 | 1.440 |
| <b>DM1TP0100FKIT</b> | 3 DM1TP0100, complete with UTF certificate | 1 | 1.560 |
| <b>DM1TP0150FKIT</b> | 3 DM1TP0150, complete with UTF certificate | 1 | 1.680 |
| <b>DM1TP0200FKIT</b> | 3 DM1TP0200, complete with UTF certificate | 1 | 1.620 |
| <b>DM1TP0250FKIT</b> | 3 DM1TP0250, complete with UTF certificate | 1 | 1.620 |
| <b>DM1TP0300FKIT</b> | 3 DM1TP0300, complete with UTF certificate | 1 | 1.680 |
| <b>DM1TP0400FKIT</b> | 3 DM1TP0400, complete with UTF certificate | 1 | 1.680 |
| <b>DM1TP0600FKIT</b> | 3 DM1TP0600, complete with UTF certificate | 1 | 1.680 |
| <b>DM3TP0500FKIT</b> | 3 DM3TP0500, complete with UTF certificate | 1 | 2.160 |
| <b>DM3TP0600FKIT</b> | 3 DM3TP0600, complete with UTF certificate | 1 | 2.160 |
| <b>DM3TP0800FKIT</b> | 3 DM3TP0800, complete with UTF certificate | 1 | 2.280 |
| <b>DM4TP1200FKIT</b> | 3 DM4TP1200, complete with UTF certificate | 1 | 2.280 |
| <b>DM5TP1000FKIT</b> | 3 DM5TP1000, complete with UTF certificate | 1 | 2.820 |
| <b>DM5TP1250FKIT</b> | 3 DM5TP1250, complete with UTF certificate | 1 | 2.760 |
| <b>DM5TP1600FKIT</b> | 3 DM5TP1600, complete with UTF certificate | 1 | 2.880 |
| <b>DM5TP2000FKIT</b> | 3 DM5TP2000, complete with UTF certificate | 1 | 2.940 |
| <b>DM5TP2500FKIT</b> | 3 DM5TP2500, complete with UTF certificate | 1 | 3.120 |
| <b>DM5TP3000FKIT</b> | 3 DM5TP3000, complete with UTF certificate | 1 | 2.940 |

### General characteristics

The UTF (Finance Technical Office) certification is required in Italy in case of applications where taxes have to be paid due to energy production (Italian regulations for plants >20kW). The certificates must be associated to the energy meter (MID version, see page 28-12 for selection) and to each single current transformer is needed.

The DM...TP type accuracy current transformers (CTs) can be provided in a kit version made by three CTs and relative UTF certificates.

If required, the fifth certificate relevant to the meter and current transformer combination can be supplied as well.

The DM...TP type accuracy current transformers (CTs) are installed in an electrical system to reduce the line current to a secondary value of 5A compatible with the ammeter inputs of the digital multimeters or protection relays.

DM...TP are accuracy current transformers in class 0.5s without a primary winding and are normally used for high primary current values starting from 60A.

The number of loops of the primary cable does not modify the accuracy but converts the primary current value proportional to secondary current (see page 29-4).

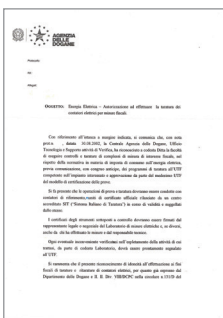
### Operational characteristics

- Operating frequency: 50...60Hz
- Secondary output current: 5A
- Overload withstand: 120% I<sub>pn</sub>
- Rated insulation voltage U<sub>i</sub>: 720V
- Rated short time thermal current I<sub>th</sub>: 40-60I<sub>pn</sub> for 1 second
- Rated dynamic current I<sub>dyn</sub>: 2.5I<sub>th</sub> for 1 second
- Insulation (dry type): class E
- Screw fixing terminals
- Sealable terminal covers
- Fixing on 35mm DIN rail (IEC/EN/BS 60715) or by screws (fixing elements standard supplied with the product)
- EN degree of protection: IP30.
- Ambient conditions
  - Operating temperature: -25...+50°C
  - Storage temperature: -40...+80°C.
  - Relative humidity, non condensing: 90%.

### Compliance

Compliant with standards: IEC/EN/BS 61869-2, IEC/EN/BS 61869-1.

## System certificate



| Order code       | Description            |
|------------------|------------------------|
| <b>DMCERTUTF</b> | UTF system certificate |

## Compact prewired split-core



DM1TMA...



DM2TMA...

| Order code | Primary current<br>I <sub>pn</sub> | Burden  |       | Qty<br>per<br>pkg | Wt |
|------------|------------------------------------|---------|-------|-------------------|----|
|            |                                    | cl. 0.5 | cl. 1 |                   |    |

24x24mm/0.94x0.94" hole. Cable supplied as standard, length 2m.

|                   |     |   |     |   |       |
|-------------------|-----|---|-----|---|-------|
| <b>DM1TMA0100</b> | 100 | — | 1.0 | 1 | 0.200 |
| <b>DM1TMA0150</b> | 150 | — | 1.0 | 1 | 0.200 |
| <b>DM1TMA0200</b> | 200 | — | 1.0 | 1 | 0.200 |
| <b>DM1TMA0250</b> | 250 | — | 1.0 | 1 | 0.200 |

36x38mm/1.42x1.50" hole. Cable supplied as standard, length 2m.

|                   |     |     |     |   |       |
|-------------------|-----|-----|-----|---|-------|
| <b>DM2TMA0250</b> | 250 | 0.5 | 1.5 | 1 | 0.380 |
| <b>DM2TMA0300</b> | 300 | 0.5 | 1.5 | 1 | 0.380 |
| <b>DM2TMA0400</b> | 400 | 0.5 | 1.5 | 1 | 0.380 |
| <b>DM2TMA0500</b> | 500 | 0.5 | 1.5 | 1 | 0.380 |
| <b>DM2TMA0600</b> | 600 | 0.5 | 1.5 | 1 | 0.380 |

### General characteristics

The DM...TMA type current transformers (CTs) are installed in an electrical system to reduce the line current to a secondary value of 5A compatible with the ammeter inputs of the digital multimeters or protection relays.

DM...TMA are instrument transformers in class 1 without a primary winding and are normally used for high primary current values starting from 100A.

### Operational characteristics

- Operating frequency: 50...60Hz
- Secondary output current: 5A
- Overload withstand: 120% I<sub>pn</sub>
- IEC rated insulation voltage U<sub>i</sub>: 720V
- IEC rated short-time thermal current I<sub>th</sub>: 40...60 I<sub>pn</sub> for 1 second
- IEC rated dynamic current I<sub>dyn</sub>: 2.5 I<sub>th</sub> for 1 second
- Cable supplied as standard, length 2m.
- Insulation (dry type): Class E
- Ambient conditions:
  - Operating temperature: -25...+50°C
  - Storage temperature: -40...+80°C
  - Relative humidity, non condensing: 90%.

### Certifications and compliance

Certifications obtained: EAC.  
Compliant with standards: IEC/EN/BS 61869-2, IEC/EN/BS 61869-1.

## Split-core



DM1TA...



DM2TA...



DM3TA...



DM4TA...

| Order code | Primary current<br>I <sub>pn</sub> | Burden          |               |               | Qty<br>per<br>pkg | Wt<br>[kg] |
|------------|------------------------------------|-----------------|---------------|---------------|-------------------|------------|
|            |                                    | cl. 0.5<br>[VA] | cl. 1<br>[VA] | cl. 3<br>[VA] |                   |            |

32x21mm/1.26x0.83" hole. Width: 89mm/3.50".

|                  |     |   |     |     |   |       |
|------------------|-----|---|-----|-----|---|-------|
| <b>DM0TA0100</b> | 100 | — | —   | 1   | 1 | 0.900 |
| <b>DM0TA0150</b> | 150 | — | 1   | 2.5 | 1 | 0.900 |
| <b>DM0TA0200</b> | 200 | — | 2.5 | —   | 1 | 0.900 |

50x80mm/1.97x3.15" hole. Width: 114mm/4.89".

|                  |      |     |     |  |   |       |
|------------------|------|-----|-----|--|---|-------|
| <b>DM1TA0250</b> | 250  | 1   | 2   |  | 1 | 0.900 |
| <b>DM1TA0300</b> | 300  | 1.5 | 3   |  | 1 | 0.900 |
| <b>DM1TA0400</b> | 400  | 1.5 | 3   |  | 1 | 0.900 |
| <b>DM1TA0500</b> | 500  | 2.5 | 5   |  | 1 | 0.900 |
| <b>DM1TA0600</b> | 600  | 2.5 | 5   |  | 1 | 0.900 |
| <b>DM1TA0800</b> | 800  | 3   | 7.5 |  | 1 | 0.900 |
| <b>DM1TA1000</b> | 1000 | 5   | 10  |  | 1 | 0.900 |

| Order code | Primary current<br>I <sub>pn</sub> | Burden          |               | Qty<br>per<br>pkg | Wt<br>[kg] |
|------------|------------------------------------|-----------------|---------------|-------------------|------------|
|            |                                    | cl. 0.5<br>[VA] | cl. 1<br>[VA] |                   |            |

80x80mm/3.15x3.15" hole. Width: 142mm/5.59".

|                  |      |     |     |   |       |
|------------------|------|-----|-----|---|-------|
| <b>DM2TA0250</b> | 250  | 1   | 2   | 1 | 1.050 |
| <b>DM2TA0300</b> | 300  | 1.5 | 3   | 1 | 1.050 |
| <b>DM2TA0400</b> | 400  | 1.5 | 3   | 1 | 1.050 |
| <b>DM2TA0500</b> | 500  | 2.5 | 5   | 1 | 1.050 |
| <b>DM2TA0600</b> | 600  | 2.5 | 5   | 1 | 1.050 |
| <b>DM2TA0800</b> | 800  | 3   | 7.5 | 1 | 1.050 |
| <b>DM2TA1000</b> | 1000 | 5   | 10  | 1 | 1.050 |
| <b>DM2TA1250</b> | 1250 | —   | 15  | 1 | 1.050 |

80x120mm/3.15x4.72" hole. Width: 142mm/5.59".

|                  |      |     |     |   |       |
|------------------|------|-----|-----|---|-------|
| <b>DM3TA0500</b> | 500  | —   | 4   | 1 | 1.250 |
| <b>DM3TA0600</b> | 600  | —   | 5   | 1 | 1.250 |
| <b>DM3TA0800</b> | 800  | 3   | 7.5 | 1 | 1.250 |
| <b>DM3TA1000</b> | 1000 | 5   | 10  | 1 | 1.250 |
| <b>DM3TA1250</b> | 1250 | 7.5 | 15  | 1 | 1.250 |
| <b>DM3TA1500</b> | 1500 | 8   | 17  | 1 | 1.250 |
| <b>DM3TA2000</b> | 2000 | —   | 17  | 1 | 1.250 |

80x160mm/3.15x6.30" hole. Width: 184mm/7.24".

|                  |      |    |    |   |       |
|------------------|------|----|----|---|-------|
| <b>DM4TA2000</b> | 2000 | 15 | 20 | 1 | 3.160 |
| <b>DM4TA2500</b> | 2500 | 15 | 20 | 1 | 3.340 |
| <b>DM4TA3000</b> | 3000 | 20 | 25 | 1 | 3.500 |
| <b>DM4TA4000</b> | 4000 | 20 | 25 | 1 | 3.760 |

### General characteristics

The DM...TA type current transformers (CTs) are installed in an electrical system to reduce the line current to a secondary value of 5A compatible with the ammeter inputs of the digital multimeters or protection relays.

DM...TA are instrument transformers in class 0.5/1 without a primary winding and are normally used for high primary current values starting from 250A.

### Operational characteristics

- Operating frequency: 50...60Hz
- Secondary output current: 5A
- Overload withstand: 120% I<sub>pn</sub>
- IEC rated insulation voltage U<sub>i</sub>: 720V
- IEC rated short-time thermal current I<sub>th</sub>: 40...60 I<sub>pn</sub> for 1 second
- IEC rated dynamic current I<sub>dyn</sub>: 2.5 I<sub>th</sub> for 1 second
- Insulation (dry type): Class E
- Screw terminals
- Sealable terminal covers
- Screw fixing (fixing elements standard supplied with the product)
- IEC degree of protection: IP30
- Ambient conditions:
  - Operating temperature: -25...+50°C
  - Storage temperature: -40...+80°C
  - Relative humidity, non condensing: 90%.

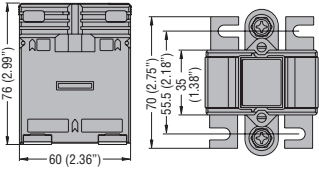
### Certifications and compliance

Certifications obtained: EAC.

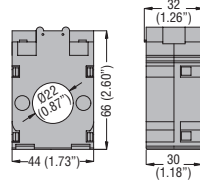
Compliant with standards: IEC/EN/BS 61869-2, IEC/EN/BS 61869-1.



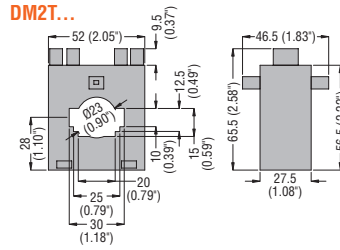
**CURRENT TRANSFORMERS**  
Wound primary **DM0TW...**



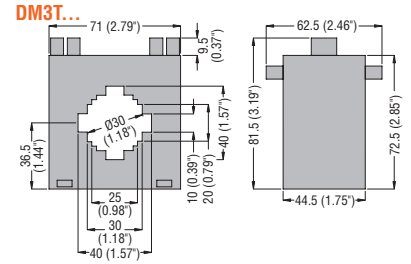
Solid core **DM0T...**



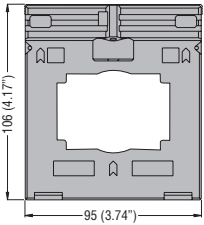
**DM2T...**



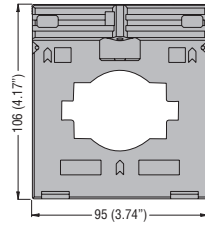
**DM3T...**



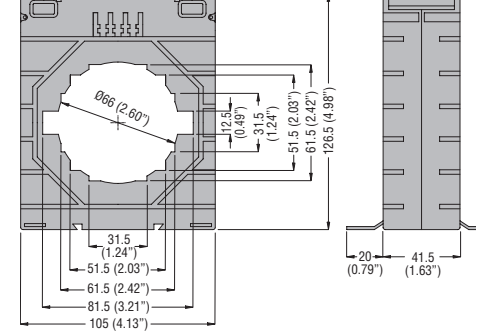
**DM33T...**



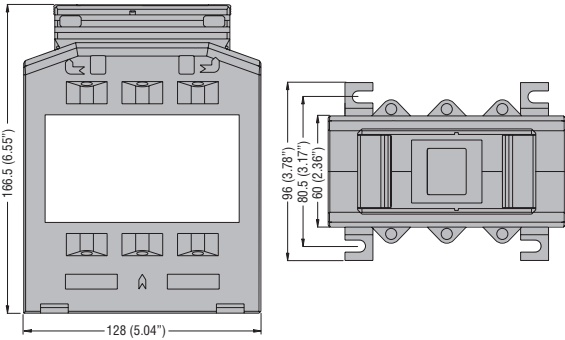
**DM34T...**



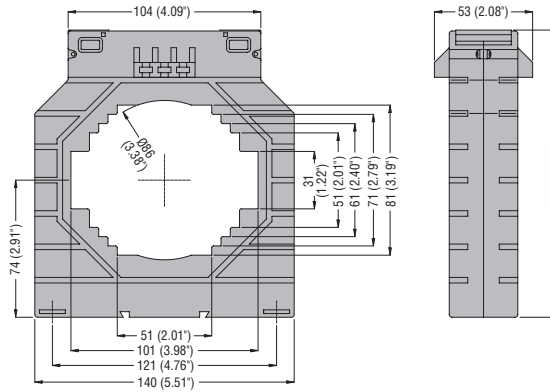
**DM35T...**



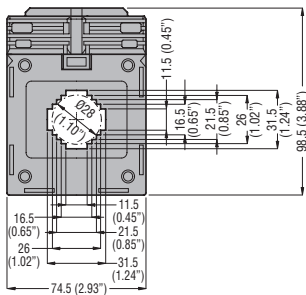
**DM37T...**



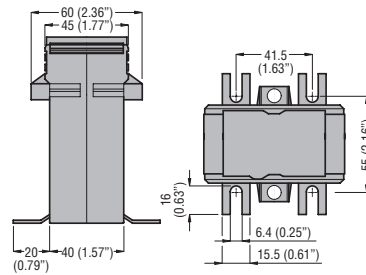
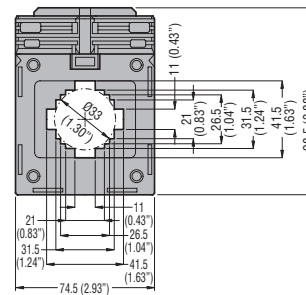
**DM4T...**



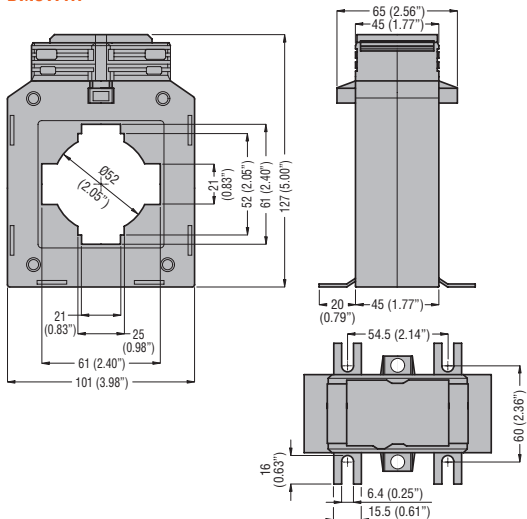
**DM1TP0060... - DM1TP0300**



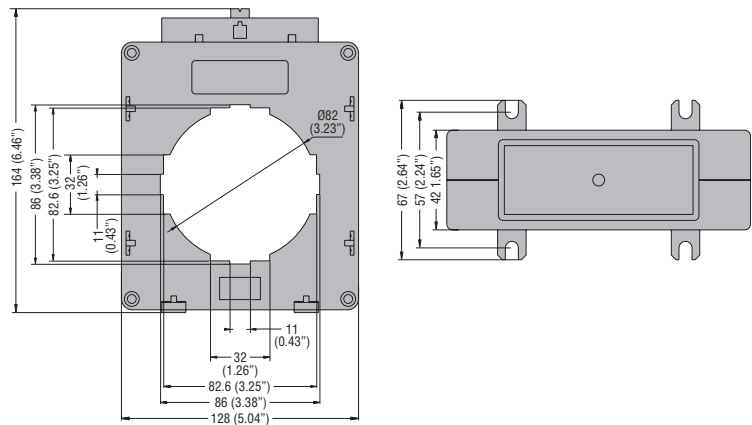
**DM1TP0400... - DM1TP0600**



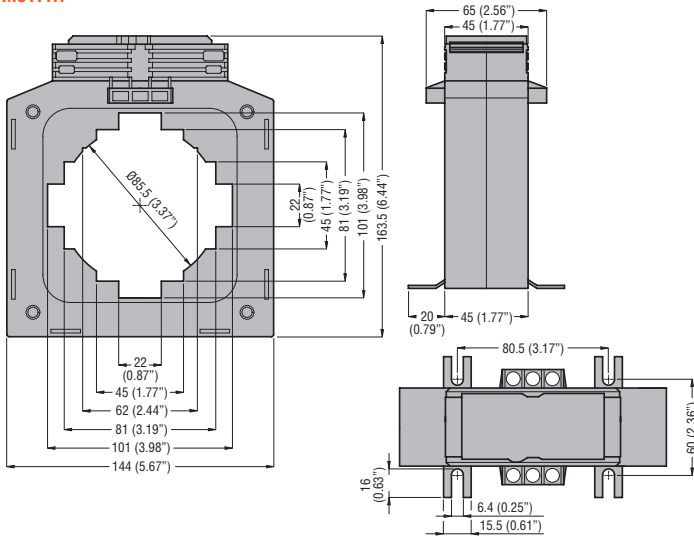
**DM3TP...**



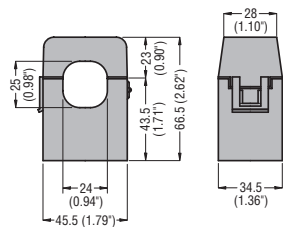
**DM4TP1200**



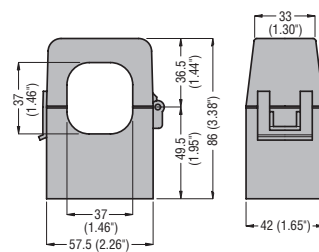
### DM5TP...



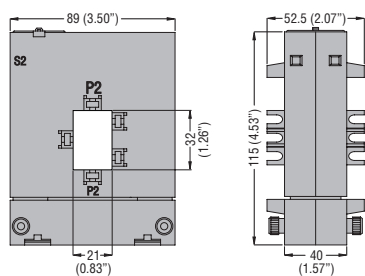
### Compact prewired split-core DM1TMA...



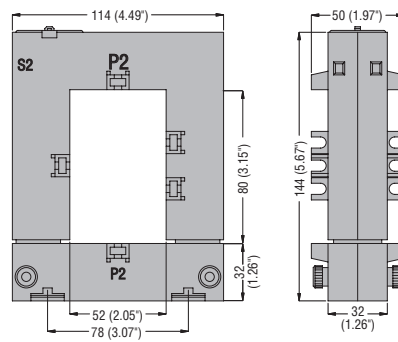
### DM2TMA...



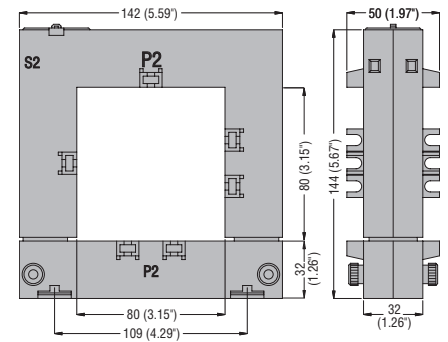
### Split-core DM0TA...



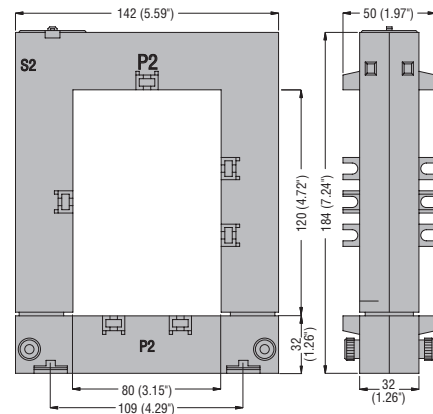
### DM1TA...



### DM2TA...



### DM3TA...



### DM4TA...

