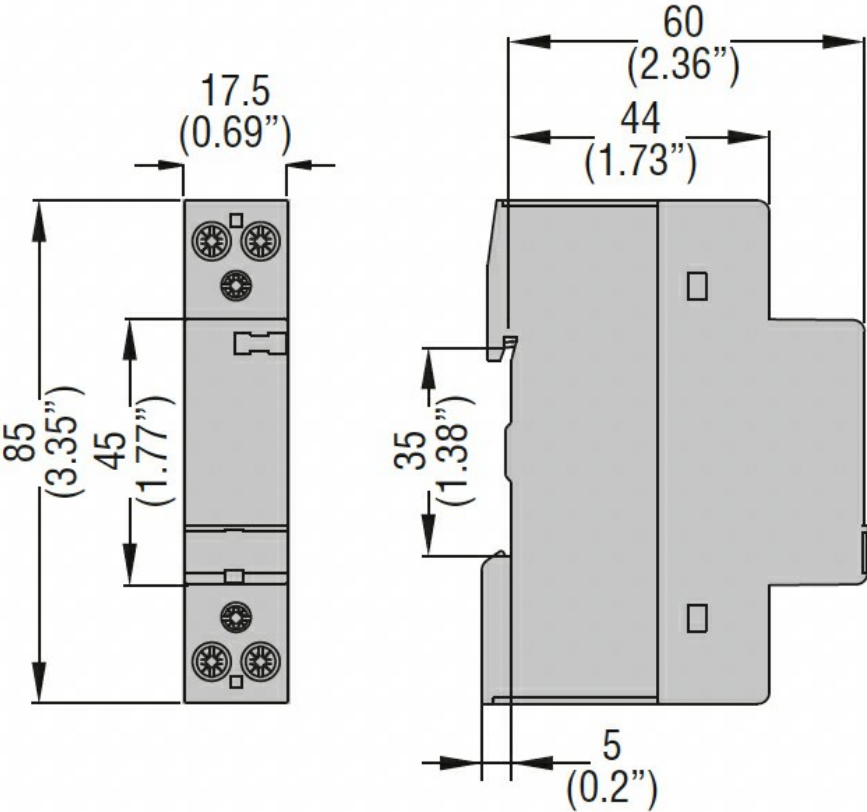




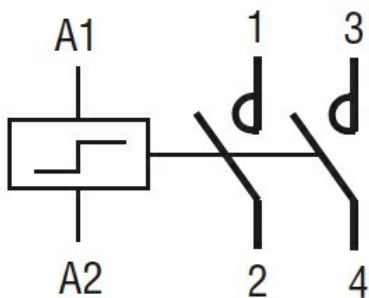
Product designation			LATCHING RELAY	
Product type designation			CNB	
Operating voltage type			AC	
Manual control			YES	
Number of poles			2	
Number of DIN modules			1	
Electrical features				
IEC Conventional free air thermal current I _{th}			A	20
Rated insulation voltage U _i IEC/EN			V	440
Rated impulse withstand voltage U _{imp}			kV	4
Minimum switching capacity			≥10V ≥100mA	
Power dissipation per pole (average value) I _{th}			W	1.7
Control circuit				
Auxiliary rated supply voltage U _s			230VAC	
Auxiliary contacts			NO	Nr. 2
Average coil consumption ≤20°C			in-rush	W 18/13
Operating voltage				
pick-up			min	%U _s 85
			max	%U _s 110
Operating times				
Average time				
Closing NO			min	ms 5
			max	ms 20
Opening NO			min	ms 5
			max	ms 20
Operations				
Mechanical life			cycles	3000000
Electrical life AC-3			cycles	300000
Electrical life AC1			cycles	200000
Ambient conditions				
Operating temperature			min	°C -5
			max	°C 55
Storage temperature			min	°C -30
			max	°C 80
Max altitude			m	2000
Mechanical features				
Fixing			DIN rail 35mm	

Tightening torque for coil terminal			
	max	Nm	0.6
	max	lbin	0.6
Tightening torque for terminals			
	max	Nm	1.2
	max	lbin	0.9
Conductor section			
Coil terminal	min	mm ²	1
	max	mm ²	2.5
	min	mm ²	1
	max	mm ²	10
Power terminal			
	min	mm ²	1
	max	mm ²	10
Terminals tool			PZ2
Weight		g	135
Resistance & Protection			
Frontal IP degree			IP20
Pollution degree			3

Dimensions



Wiring diagrams



Certifications and compliance

Compliance

IEC/EN/BS 60669-1
IEC/EN/BS 60669-2-2
IEC/EN/BS 60947-1
IEC/EN/BS 60947-4-1
IEC/EN/BS 60947-5-1
IEC/EN/BS 61095

Certificates

EAC

ETIM classification

ETIM 8.0

EC000066 -
Power contactor,
AC switching