

Product designation	Rotary cam switches		
Product type designation	GX16		
General characteristics			
Switching diagram	53 - Changeover switch 3 poles - 2 speed motor starting with separate windings		
N° of elements	3		
Mounting form	U - Front mounting with black handle		
Contact characteristics			
Rated insulation voltage Ui	IEC/EN UL/CSA	V V	690 600
Rated impulse withstand voltage Uimp		kV	6
Conventional free air thermal current Ith	IEC/EN UL/CSA	A A	16 12
Rated operational voltage		V	440
Rated operational impulse voltage		kV	4
Maximum fuse size for short-circuit protection In (gG)	10kA 15kA 25kA	A A A	16 16 16
Rated short time current Icw	1s	A	250
Conductivity	10/5 mA/V		
Operational current Ie IEC/EN			
AC1/AC21A		A	16
AC15	110V 220/230V 380/400V 660/690V	A A A A	10 8 4 1.5
Rated operational power in AC			
Three-phase AC-3	220/230V 380/440V 500/690V	kW kW kW	3.5 4.5 5.5
Single-phase AC-3	110V 220/230V 380/440V	kW kW kW	0.55 1.5 2.2
Three-phase AC23A	220/230V 380/440V 500/690V	kW kW kW	3.7 6.5 7.5
Single-phase AC23A	110V	kW	0.75

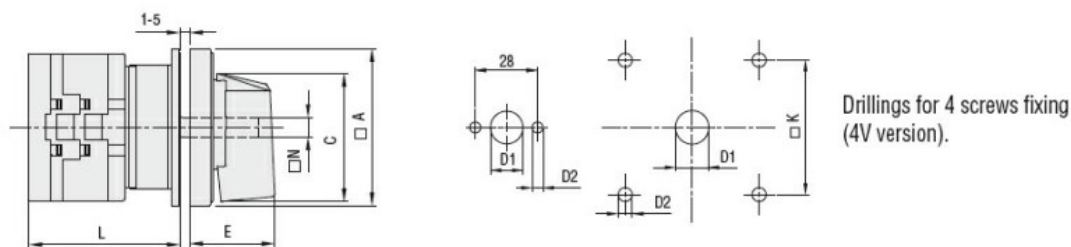
		220/230V	kW	1.8
		380/440V	kW	3
Rated operational current in DC				
DC21A				
		48V	A	16
		60V	A	16
		110V	A	4
		220V	A	0.6
		440V	A	0.25
DC23A (poles in series)				
		24V	A	16 (1)
		48V	A	16 (2)
		60V	A	16 (3)
		110V	A	10 (3)
		220V	A	7 (4)
DC13				
		24V	A	16
		48V	A	14
		60V	A	10
		110V	A	1
		220V	A	0.4
		440V	A	0.15
Power dissipation			W	0.6
Mechanical features				
Terminals screw				3M
Tightening torque for terminals max			Nm	0.5
Conductor size				
AWG - Rigid cable				
		min	AWG	20
		Max	AWG	12
AWG - Flexible cable				
		min	AWG	20
		Max	AWG	12
Conductor size (IEC) - Flexible cable				
		min	mm ²	0.5
		Max	mm ²	2.5
Conductor size (IEC) - Rigid cable				
		min	mm ²	0.5
		Max	mm ²	2.5
Mechanical life			cycles	1X10 ⁶
UL technical data				
Motor power for direct-on-line control				
for three-phase motor				
		120V	HP	1.5
		240V	HP	3
		480V	HP	5
		600V	HP	5
for single-phase motor				
		120V	HP	0.75
		240V	HP	1
Ambient conditions				
Temperature				
Operating temperature				
		min	°C	-25

	max	°C	+55
Storage temperature	min	°C	-40
	max	°C	+70

Resistance & Protection

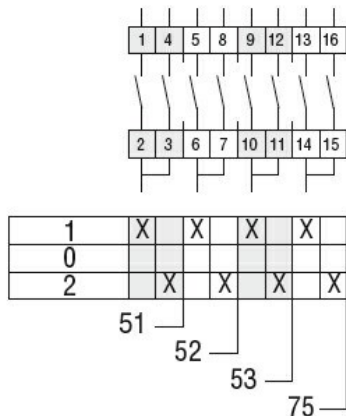
Frontal IP degree	IP65
Terminals IP degree	IP20

Dimensions



Series	Dimensions							L Number of elements											
	□A	C	ØD1	ØD2	E	□K	□N	1	2	3	4	5	6	7	8	9	10	11	12
GX16	48	39.5	12	5	26.5	36	6	43	51.5	60	68.5	77	85.5	94	102.5	111	119.5	128	136.5
GX20	48	39.5	12	5	26.5	36	6	43	51.5	60	68.5	77	85.5	94	102.5	111	119.5	128	136.5
GX32	65	53	14	5	34.5	48	7	51	63	75	85	99	111	123	135	147	159	171	183
GX40	65	53	14	5	34.5	48	7	51	63	75	85	99	111	123	135	147	159	171	183

Wiring diagrams



Certifications and compliance

Compliance

CSA C22.2 n° 14
IEC/EN/BS 60947-1
IEC/EN/BS 60947-3
IEC/EN/BS 60947-5-1
IEC/EN/BS 61058-1
UL60947-4-1

Certificates

cULus
EAC

ETIM classification

ETIM 8.0

EC001105 - Off-load switch