



Product designation

Product type designation

Rotary cam  
switches  
GX16

### General characteristics

Switching diagram

90 - ON/OFF  
switch 1 pole

N° of elements

1

Mounting form

U - Front  
mounting with  
black handle

### Contact characteristics

Rated insulation voltage  $U_i$

IEC/EN	V	690
UL/CSA	V	600

Rated impulse withstand voltage  $U_{imp}$

kV 6

Conventional free air thermal current  $I_{th}$

IEC/EN	A	16
UL/CSA	A	12

Rated operational voltage

V 440

Rated operational impulse voltage

kV 4

Maximum fuse size for short-circuit protection  $I_n$  (gG)

10kA	A	16
15kA	A	16
25kA	A	16

Rated short time current  $I_{cw}$

1s A 250

Conductivity

10/5 mA/V

Operational current  $I_e$  IEC/EN

AC1/AC21A

A 16

AC15

110V	A	10
220/230V	A	8
380/400V	A	4
660/690V	A	1.5

Rated operational power in AC

Three-phase AC-3

220/230V	kW	3.5
380/440V	kW	4.5
500/690V	kW	5.5

Single-phase AC-3

110V	kW	0.55
220/230V	kW	1.5
380/440V	kW	2.2

Three-phase AC23A

220/230V kW 3.7

	380/440V	kW	6.5
	500/690V	kW	7.5
Single-phase AC23A			
	110V	kW	0.75
	220/230V	kW	1.8
	380/440V	kW	3
Rated operational current in DC			
DC21A			
	48V	A	16
	60V	A	16
	110V	A	4
	220V	A	0.6
	440V	A	0.25
DC23A (poles in series)			
	24V	A	16 (1)
	48V	A	16 (2)
	60V	A	16 (3)
	110V	A	10 (3)
	220V	A	7 (4)
DC13			
	24V	A	16
	48V	A	14
	60V	A	10
	110V	A	1
	220V	A	0.4
	440V	A	0.15
Power dissipation		W	0.6
Mechanical features			
Terminals screw			3M
Tightening torque for terminals max		Nm	0.5
Conductor size			
AWG - Rigid cable			
	min	AWG	20
	Max	AWG	12
AWG - Flexible cable			
	min	AWG	20
	Max	AWG	12
Conductor size (IEC) - Flexible cable			
	min	mm <sup>2</sup>	0.5
	Max	mm <sup>2</sup>	2.5
Conductor size (IEC) - Rigid cable			
	min	mm <sup>2</sup>	0.5
	Max	mm <sup>2</sup>	2.5
Weight		g	96
Mechanical life		cycles	1X10 <sup>6</sup>
UL technical data			
Motor power for direct-on-line control			
for three-phase motor			
	120V	HP	1.5
	240V	HP	3
	480V	HP	5
	600V	HP	5
for single-phase motor			
	120V	HP	0.75

240V HP 1

## Ambient conditions

### Temperature

#### Operating temperature

min °C -25  
max °C +55

#### Storage temperature

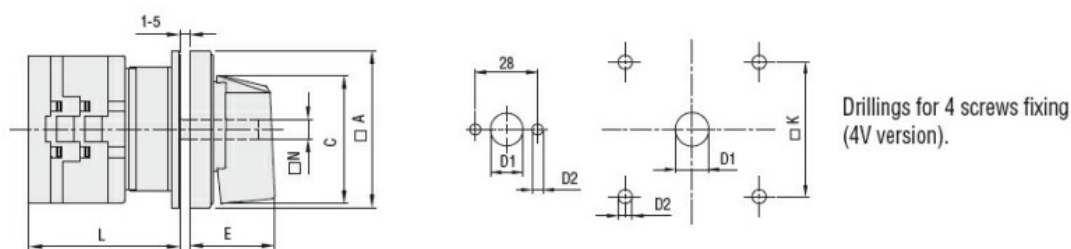
min °C -40  
max °C +70

## Resistance & Protection

Frontal IP degree IP65

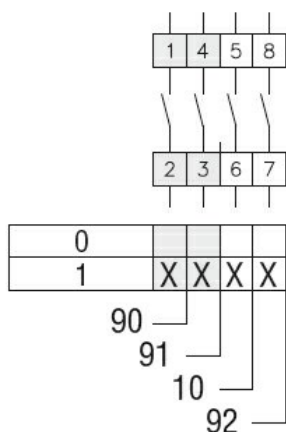
Terminals IP degree IP20

## Dimensions



Series	Dimensions							L Number of elements											
	□A	C	ØD1	ØD2	E	□K	□N	1	2	3	4	5	6	7	8	9	10	11	12
GX16	48	39.5	12	5	26.5	36	6	43	51.5	60	68.5	77	85.5	94	102.5	111	119.5	128	136.5
GX20	48	39.5	12	5	26.5	36	6	43	51.5	60	68.5	77	85.5	94	102.5	111	119.5	128	136.5
GX32	65	53	14	5	34.5	48	7	51	63	75	85	99	111	123	135	147	159	171	183
GX40	65	53	14	5	34.5	48	7	51	63	75	85	99	111	123	135	147	159	171	183

## Wiring diagrams



## Certifications and compliance

### Compliance

CSA C22.2 n° 14

IEC/EN/BS 60947-1

IEC/EN/BS 60947-3

IEC/EN/BS 60947-5-1

IEC/EN/BS 61058-1

UL60947-4-1

### Certificates

cULus

EAC

ETIM classification

ETIM 8.0

EC001105 - Off-  
load switch