



Product designation

INDUSTRIAL  
RELAYS ATEX  
HR8020

Product type designation

**Contact characteristics**

Contact configuration			2 NO
Rated insulation voltage $U_i$ IEC/EN	V		250
Rated impulse withstand voltage $U_{imp}$	kV		4
IEC Conventional free air thermal current $I_{th}$	A		30
Rated current ( $I_n$ )	A		30
Relay control voltage	V		230VAC
Single-phase motor control			
	230VAC	kW	2.2
Contact impedance		mΩ	50
Contact material			Ag/SnO <sub>2</sub>

**Operating times**

Closing	ms	25
Opening	ms	25

**Operations**

Mechanical life	cycles	5000000
Electrical life AC1	cycles	100000

**Coil characteristics**

Average coil consumption AC at 20°C	VA	4
-------------------------------------	----	---

Operating range

	Closing	% $U_n$	80...110
	Opening	% $U_n$	20...55
Maximum cycle frequency		cycles/h	360

**Mechanical features**

Operating position

	normal	Any
Fixing		With screw

**Ambient conditions**

Temperature

Operating temperature

min	°C	-40
max	°C	+85

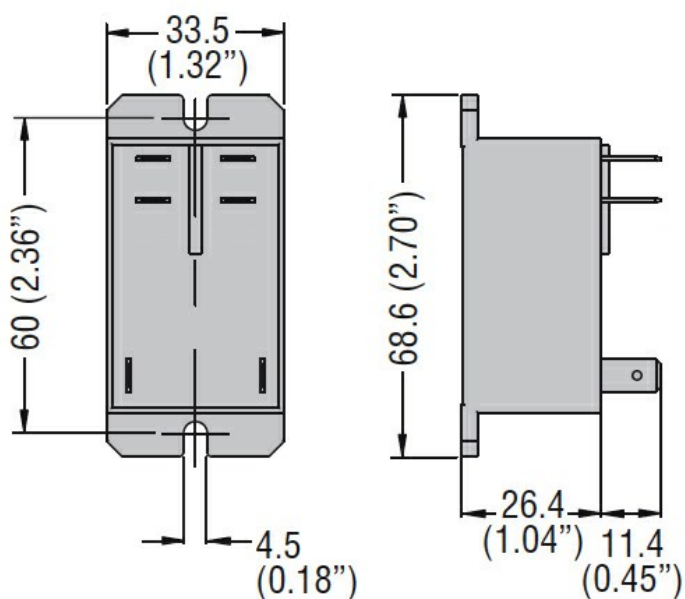
Storage temperature

min	°C	-40
max	°C	+85

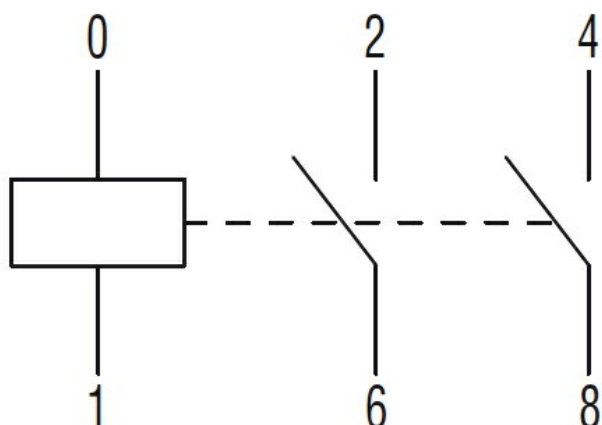
**Other features**

Indication	No
Mechanical contact position indicator	No
Mechanical test actuator	No

**Dimensions**



#### Wiring diagrams



#### Certifications and compliance

##### Compliance

IEC/EN/BS 61810-1

##### Certificates

cURus

EAC

TUV (ATEX)

VDE

#### ETIM classification

ETIM 8.0

EC001437 –  
Switching relay