

SWITCH DISCONNECTORS AND CHANGEOVER SWITCHES



GL SERIES

 **Lovato**
electric

ENERGY AND AUTOMATION

FROM 160A TO 630A



SWITCH DISCONNECTORS

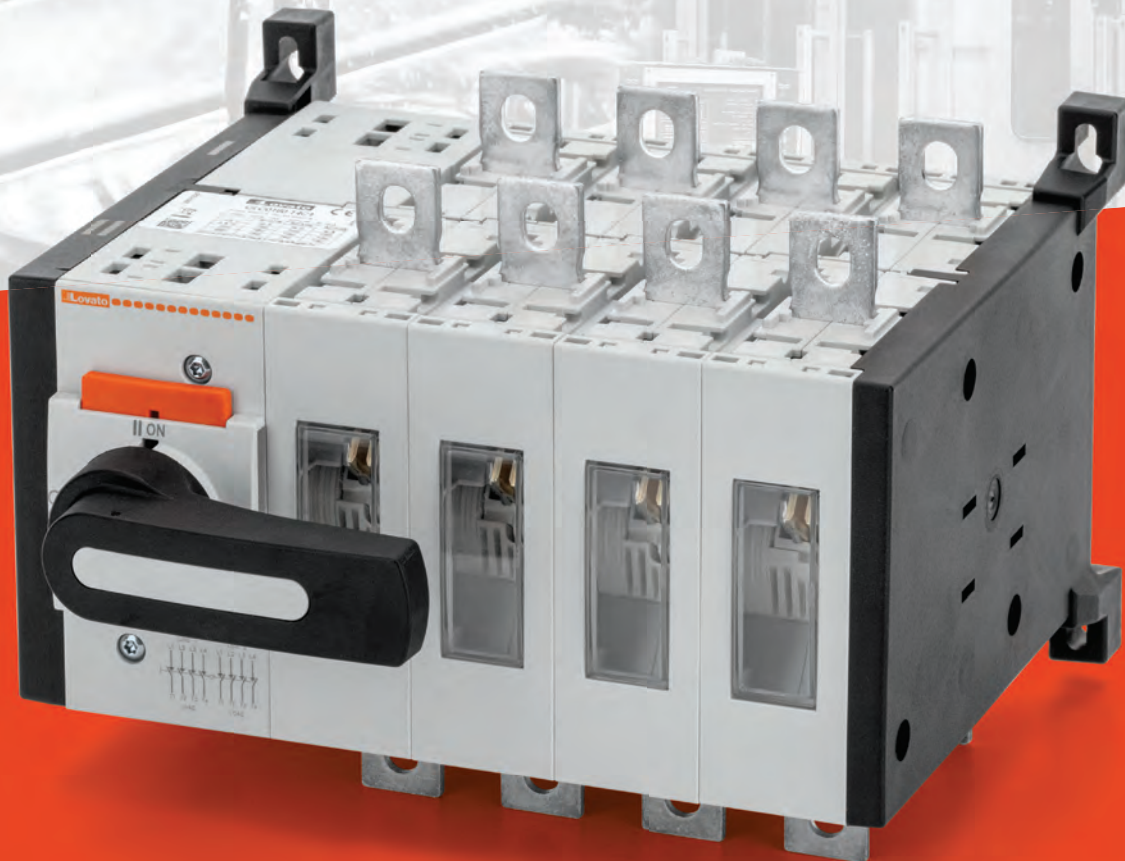
- > **Compact** dimensions
- > Four-pole version with the optional **fourth-pole add-on**
- > From **160A** to **630A** AC23
- > **100A**, **200A** and **400A** UL98 listed versions



WIDE RANGE OF ACCESSORIES

A wide choice of auxiliary contacts, terminal covers, phase barriers, terminal clamps, bridging bars, shafts and handles are available to satisfy every installation need.

...SAFE, RELIABLE AND COMPACT



MANUAL CHANGEOVER SWITCHES

- > **Compact** dimensions
- > **Three-pole** and **four-pole** versions already assembled
- > From **160A** to **630A** AC23
- > **100A**, **200A** and **400A** UL1008 listed versions

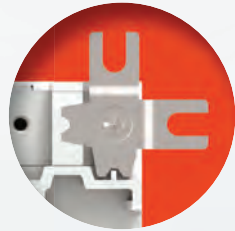


MADE IN ITALY

THE PERFECT SOLUTION

SNAP-ON AUXILIARY CONTACTS

Suitable for all the switch disconnectors and changeover switches, the snap-on contacts are mounted on the main switching actuator (max 8 contacts for switch disconnectors; max 4 contacts for changeover switches).



FLEXIBILITY

Switch disconnectors can be installed in all directions. The clips for screw fixing can be adjusted both in rotation and position (flexible fixing interaxis).



HIGH IEC ELECTRICAL CAPABILITY

The rated currents in AC23 up to 630A-415V and up to 500A-690V are the highest of the category.

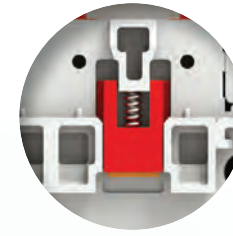
CAPTIVE NUTS

Accessory that allows even easier wiring of the terminals using a single key.



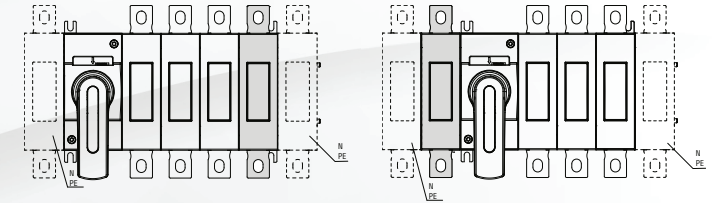
ANTI-SLIDE INSERT

For sizes from 160A to 315A there are two rubber pad inserts to prevent the sliding of switch disconnectors on the DIN rail.



MODULARITY OF COMPONENTS

It is possible to optimize the management of the various product configurations thanks to the modularity of the components: fourth pole, earth and neutral terminals can be mounted by the installer in the desired position.



SNAP-ON SHAFT MOUNTING

Shafts can be mounted and released with a simple snap action on the front of the switch. This feature allows fast installation and easy accessibility to the panel in case of maintenance.



HANDLES

Switch disconnectors and changeover switches are standard supplied without any handles. By purchasing the direct operating handle separately it is possible to create a direct operating version. The handles can be mounted and removed very easily thanks to the snap-on assembly.



> IP66, IP69K and NEMA 4X

A wide range of screw fixing pistol grip handles are available with the maximum degree of protection on the market.

> UL508A

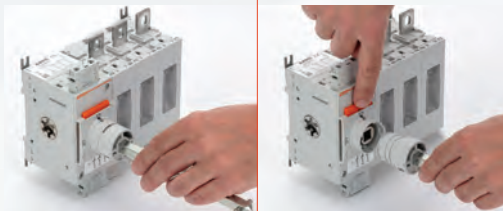
In compliance with UL508A standards, which require internal panel inspection by authorized personnel with power applied, pistol handles are available with defeatable feature of the door coupling when the switch disconnector or the changeover switch is closed, i.e. in ON position.

> Padlockable

All direct and door coupling handles are equipped with integrated padlock mechanism.

> Shaft alignment ring

To facilitate the insertion of the shaft extension in the door coupling handle, the alignment ring can be mounted.



Snap-on shaft mounting and dismounting

VISIBLE CONTACTS: MAXIMUM SECURITY

Thanks to the transparent window on the individual power poles the open or closed switch status is clearly visible at a distance.



HIGH BREAKING POWER

The high speed switching mechanism features a rotating contact with double breaking on each pole delivering high breaking power.



FROM 160A TO 315A ALSO IN METAL ENCLOSURES

The metal enclosures are made of painted sheet steel with a padlockable handle. The door is secured by two screws and hinged on the right side of the enclosure. The high degree of protection IP65 allows the use of these enclosures in the most demanding applications.



SELECTION GUIDE

IEC/EN/BS



Type	IEC conventional free air thermal current Ith			IEC rated operational Ie		IEC reactive power for control of capacitors 400V [kvar]	Fourth pole	Neutral terminal	Earth/ground terminal	Direct operating handle		Door coupling handle		Shaft extensions for door coupling handles			Shaft alignment ring	Auxiliary contacts	Terminal covers	Phase barriers	Terminal clamps	Bridging bars	Captive nuts
	AC21A (≤690V)	AC23A (≤400V)	AC23A (≤500V)	Black	Yellow/red					Black	Yellow/red	Order code	Panel depth min [mm]	max [mm]	Shaft section □ [mm]								
Order code	[A]	[A]	[A]	[kvar]	Order code	Order code	Order code	Order code	Order code	Order code	Order code	Order code	Order code	Order code	Order code	Order code	Order code	Order code	Order code	Order code	Order code	Order code	
IEC/EN/BS three-pole switch disconnectors.																							
GL0160C1	160	160	160	80	GLX420315	GLX300	GLX301	GLX61DB	GLX61D	GLX61B	GLX61	GLX7150S10 GLX7200S10 GLX7300S10 GLX7400S10 GLX7500S10	124	194	10	GLX00	GLX1001 (1NC)	GLX800 (3 pcs)	GLX900 (6 pcs)	GLX500Ⓢ GLX501Ⓢ	-	GLX550 (8 pcs)	
GL0200C1	200	200	200	100									244	344			GLX1010EA (1NAA early break)	GLX801 (4 pcs)	GLX901 (8 pcs)				
GL0250C1	250	250	250	115									444	544									
GL0315C1	315	315	250	145									227	277									
GL0320C1	320	320	320	145	GLX420320	GLX302	GLX303	GLX62DB	GLX62D	GLX62B	GLX62	GLX7150S10 GLX7200S10 GLX7300S10 GLX7400S10 GLX7500S10	157	227				GLX802 (3 pcs)	GLX902 (6 pcs)	GLX502Ⓢ GLX503Ⓢ GLX504Ⓢ GLX505Ⓢ		GLX551 (8 pcs)	
GL0400C1	400	400	400	180	GLX420400								277	377									
GL0500C1	500	500	500	200	GLX420500								477	577									
GL0630C1	630	630	500	250	GLX420630								577	677				GLX803 (4 pcs)	GLX903 (8 pcs) Built-in				
IEC/EN/BS three-pole changeover switches.																							
GLC0160C1	160	160	160	-				GLX61DB	-	GLX61CB	-	GLX7150S10 GLX7200S10 GLX7300S10 GLX7400S10 GLX7500S10	220	290	10	GLX00	GLX1001 (1NC)	GLX800 (3 pcs)	GLX900 (6 pcs)	GLX500Ⓢ GLX501Ⓢ	GLX201 (3 pcs)	GLX550 (8 pcs)	
GLC0200C1	200	200	200										340	440				GLX801 (4 pcs)	GLX901 (8 pcs)		GLX202 (4 pcs)		
GLC0250C1	250	250	250										440	540									
GLC0315C1	315	315	250										267	337									
GLC0320C1	320	320	320					GLX62DB	-	GLX62CB	-	GLX7150S10 GLX7200S10 GLX7300S10 GLX7400S10 GLX7500S10	267	337				GLX802 (3 pcs)	GLX902 (6 pcs)	GLX502Ⓢ GLX503Ⓢ GLX504Ⓢ GLX505Ⓢ	GLX206 (3 pcs)	GLX551 (8 pcs)	
GLC0400C1	400	400	400										387	487									
GLC0500C1	500	500	500										587	687									
GLC0630C1	630	630	500										687	787				GLX803 (4 pcs)	GLX903 (8 pcs) Built-in		GLX207 (4 pcs)		
IEC/EN/BS four-pole changeover switches.																							
GLC0160T4C1	160	160	160	-				GLX61DB	-	GLX61CB	-	GLX7150S10 GLX7200S10 GLX7300S10 GLX7400S10 GLX7500S10	220	290	10	GLX00	GLX1001 (1NC)	GLX800 (3 pcs)	GLX900 (6 pcs)	GLX500Ⓢ GLX501Ⓢ	GLX201 (3 pcs)	GLX550 (8 pcs)	
GLC0200T4C1	200	200	200										340	440				GLX801 (4 pcs)	GLX901 (8 pcs)		GLX202 (4 pcs)		
GLC0250T4C1	250	250	250										440	540									
GLC0315T4C1	315	315	250										267	337									
GLC0320T4C1	320	320	320					GLX62DB	-	GLX62CB	-	GLX7150S10 GLX7200S10 GLX7300S10 GLX7400S10 GLX7500S10	267	337				GLX802 (3 pcs)	GLX902 (6 pcs)	GLX502Ⓢ GLX503Ⓢ GLX504Ⓢ GLX505Ⓢ	GLX206 (3 pcs)	GLX551 (8 pcs)	
GLC0400T4C1	400	400	400										387	487									
GLC0500T4C1	500	500	500										587	687									
GLC0630T4C1	630	630	500										687	787				GLX803 (4 pcs)	GLX903 (8 pcs) Built-in		GLX207 (4 pcs)		



Type	General purpose current	Max 3-phase horsepower rating	Fourth pole	Neutral terminal	Earth/ground terminal	Direct operating handle		Door coupling handle		Shaft extensions for door coupling handles			Shaft alignment ring	Auxiliary contacts	Terminal covers	Phase barriers	Terminal clamps	Bridging bars	Captive nuts	
						Black	Yellow/red	Black	Yellow/red	Order code	Panel depth min [mm]	max [mm]								Shaft section □ [mm]
Order code	[A]	[HP/V]	Order code	Order code	Order code	Order code	Order code	Order code	Order code	Order code	Order code	Order code	Order code	Order code	Order code	Order code	Order code	Order code	Order code	
UL98 three-pole switch disconnectors.																				
GL0100C1UL	100	30/240 - 75/480 - 100/600				GLX61DB	GLX61D	GLX61B	GLX61	GLX7150S10 GLX7200S10 GLX7300S10 GLX7400S10 GLX7500S10	124	194	10	GLX00	GLX1001 (1NC)	GLX800 (3 pcs)	Built-in	GLX500Ⓢ GLX501Ⓢ	-	GLX550 (8 pcs)
GL0200C1UL	200	75/240 - 150/480 - 200/600									244	344			GLX1010EA (1NAA early break)	GLX801 (4 pcs)				
GL0400C1UL	400	125/240 - 250/480 - 350/600									157	227				GLX802 (3 pcs)	Built-in	GLX502Ⓢ GLX503Ⓢ GLX504Ⓢ GLX505Ⓢ		GLX551 (8 pcs)
UL1008 three-pole changeover switches.																				
GLC0100C1UL	100	30/240 - 75/480 - 100/600				GLX61DB	-	GLX61CB	-	GLX7150S10 GLX7200S10 GLX7300S10 GLX7400S10 GLX7500S10	220	290	10	GLX00	GLX1001 (1NC)	GLX800 (3 pcs)	Built-in	GLX500Ⓢ GLX501Ⓢ	GLX201 (3 pcs)	GLX550 (8 pcs)
GLC0200C1UL	200	75/240 - 150/480 - 200/600									340	440			GLX1010EA (1NAA early break)	GLX801 (4 pcs)			GLX202 (4 pcs)	
GLC0400C1UL	400	125/240 - 250/480 - 350/600									267	337				GLX802 (3 pcs)	Built-in	GLX502Ⓢ GLX503Ⓢ GLX504Ⓢ GLX505Ⓢ	GLX206 (3 pcs)	GLX551 (8 pcs)
UL1008 four-pole changeover switches.																				
GLC0100T4C1UL	100	30/240 - 75/480 - 100/600				GLX61DB	-	GLX61CB	-	GLX7150S10 GLX7200S10 GLX7300S10 GLX7400S10 GLX7500S10	220	290	10	GLX00	GLX1001 (1NC)	GLX800 (3 pcs)	Built-in	GLX500Ⓢ GLX501Ⓢ	GLX201 (3 pcs)	GLX550 (8 pcs)
GLC0200T4C1UL	200	75/240 - 150/480 - 200/600									340	440			GLX1010EA (1NAA early break)	GLX801 (4 pcs)			GLX202 (4 pcs)	
GLC0400T4C1UL	400	125/240 - 250/480 - 350/600									267	337				GLX802 (3 pcs)	Built-in	GLX502Ⓢ GLX503Ⓢ GLX504Ⓢ GLX505Ⓢ	GLX206 (3 pcs)	GLX551 (8 pcs)

① 1-piece set. 1 terminal connection for single cable:
 - Maximum conductor cross section: 120mm²/250kcmil;
 - Minimum conductor cross section: 16mm²/6AWG.

② 3-piece set. 3 terminals connection for single cable:
 - Maximum conductor cross section: 120mm²/250kcmil;
 - Minimum conductor cross section: 16mm²/6AWG.

③ 1-piece set. 1 terminal connection for single cable:
 - Maximum conductor cross section: 304mm²/600kcmil;
 - Minimum conductor cross section: 33.6mm²/2AWG.

④ 3-piece set. 3 terminals connection for single cable:
 - Maximum conductor cross section: 304mm²/600kcmil;
 - Minimum conductor cross section: 33.6mm²/2AWG.

⑤ 1-piece set. 1 terminal connection for double cables:
 - Maximum conductor cross section: 2x152mm²/2x300kcmil;
 - Minimum conductor cross section: 2x21.2mm²/2x4AWG.

⑥ 3-piece set. 3 terminals connection for double cables:
 - Maximum conductor cross section: 2x152mm²/2x300kcmil;
 - Minimum conductor cross section: 2x21.2mm²/2x4AWG.

■ SWITCH DISCONNECTORS AND CHANGEOVER SWITCHES GL SERIES



www.LovatoElectric.com

LOVATO ELECTRIC S.P. A.

via Don E. Mazza, 12
24020 Gorle (Bergamo), ITALY

tel +39 035 4282111
info@LovatoElectric.com

Follow us



The products described in this publication are subject to be revised or improved at any moment. Catalogue descriptions and details, such as technical and operational data, drawings, diagrams and instructions, etc., do not have any contractual value. In addition, products should be installed and used by qualified personnel and in compliance with the regulations in force for electrical systems in order to avoid damages and safety hazards.