



Product designation				Earth leakage relays
Product type designation				RC
General characteristics				
Description				Compact, 1 operating threshold
N° of operating threshold				1
Control circuit				
Toroidal transformer				Incorporated diam. 110mm/4.33"
Adjustments				
Tripping set-point (IΔn)		(x0.1)	A	0.025...0.25
		(x1)	A	0.25...2.5
		(x10)	A	2.5...25
Tripping delay time		(tx1)	s	0.02...0.5
		(tx10)	s	0.2...5
		Selection of multiplier for IΔn and t		
Resetting				Configurable automatic or manual by button on front
Test Button				Yes
Shunt circuit control				No
Auxiliary supply				
Auxiliary rated supply voltage Us				24-48VAC/DC
Output contacts				1
Rated frequency			Hz	50...60
Power consumption Max			VA	3
Relay outputs				
Relay state				Normally de-energised
Contact arrangement				1 changeover SPDT (trip)
Rated contact capacity IEC Ith				5A - 250VAC
Insulations				
Power frequency withstand voltage			kV	2.5kV for 60s
Indications				
Auxiliary voltage available (ON)				Green LED
Relay tripping (TRIP)				Red LED
Connections				
Terminals type				Fixed
Tightening torque for terminals				

Conductor section	max	Nm	0.5
		lbin	4.5
	min		24
			12
IEC	min	mm <sup>2</sup>	0.2
		mm <sup>2</sup>	2.5
	max		

#### Operations

Mechanical life cycles 50000000

Electrical life cycles 300000

#### Ambient conditions

Temperature

Operating temperature

min	°C	-10
max	°C	+60

Storage temperature

min	°C	-20
max	°C	+80

Relative humidity % ≤90%

#### Housing

Material Self-extinguishing polycarbonate

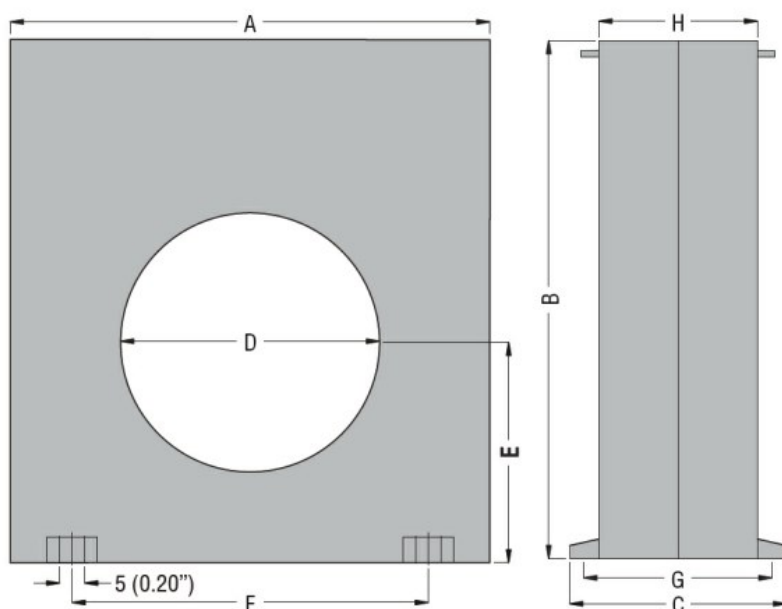
Mounting 35mm DIN rail

Degree of protection IP20 terminals

Dimensions (W x H x D) mm 150x160x70

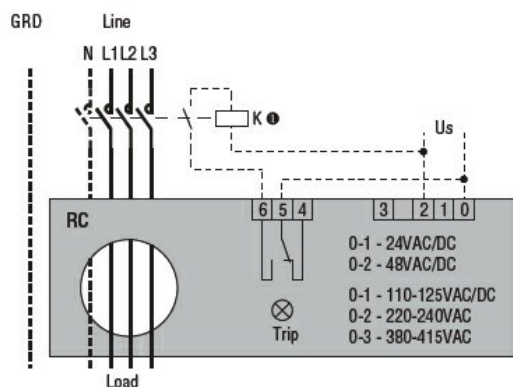
Weight g 485

#### Dimensions



TYPE	A	B	C	D	E	F	G	H
RC35	100 (3.94")	110 (4.33")	70 (2.75")	35 (1.38")	47 (1.85")	60 (2.36")	60 (2.36")	50 (1.97")
RC60	100 (3.94")	110 (4.33")	70 (2.75")	60 (2.36")	47 (1.85")	60 (2.36")	60 (2.36")	50 (1.97")
RC80	150 (5.90")	160 (6.30")	70 (2.75")	80 (3.15")	70 (2.75")	110 (4.33")	60 (2.36")	50 (1.97")
RC110	150 (5.90")	160 (6.30")	70 (2.75")	110 (4.33")	70 (2.75")	110 (4.33")	60 (2.36")	50 (1.97")

## Wiring diagrams



## Certifications and compliance

Compliant with standards

IEC/EN 60947-2

Certificates

EAC

## ETIM classification

ETIM 8.0

EC001445 -  
Residual current  
monitoring relay