



Product designation

INDUSTRIAL
RELAYS ATEX
HR8020

Product type designation

Contact characteristics

Contact configuration			2 NO
Rated insulation voltage U_i IEC/EN	V		250
Rated impulse withstand voltage U_{imp}	kV		4
IEC Conventional free air thermal current I_{th}	A		30
Rated current (I_n)	A		30
Relay control voltage	V		12VDC
Single-phase motor control			
	230VAC	kW	2.2
Contact impedance		mΩ	50
Contact material			Ag/SnO ₂

Operating times

Closing	ms	25
Opening	ms	25

Operations

Mechanical life	cycles	5000000
Electrical life AC1	cycles	100000

Coil characteristics

Average coil consumption AC at 20°C	VA	1,7
-------------------------------------	----	-----

Operating range

	Closing	% U_n	80...110
	Opening	% U_n	20...55
Maximum cycle frequency		cycles/h	360

Mechanical features

Operating position

	normal	Any
Fixing		With screw

Ambient conditions

Temperature

Operating temperature

min	°C	-40
max	°C	+85

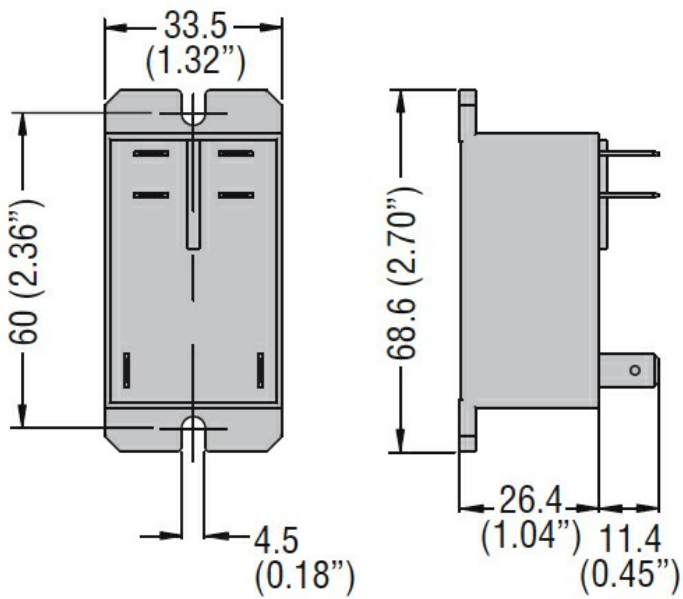
Storage temperature

min	°C	-40
max	°C	+85

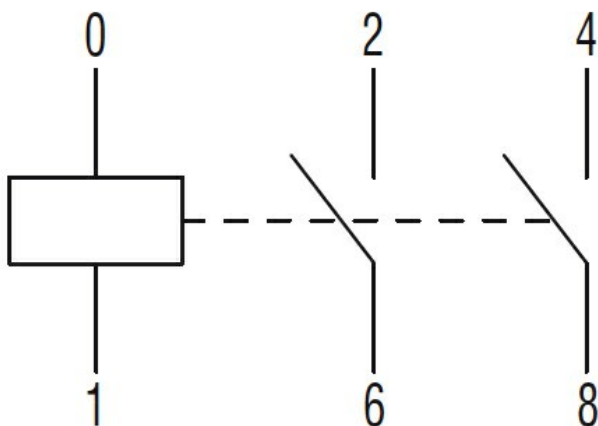
Other features

Indication	No
Mechanical contact position indicator	No
Mechanical test actuator	No

Dimensions



Wiring diagrams



Certifications and compliance

Compliance

IEC/EN/BS 61810-1

Certificates

cURus

EAC

TUV (ATEX)

VDE

ETIM classification

ETIM 8.0

EC001437 –
Switching relay