



Product designation

INDUSTRIAL
RELAYS ATEX
HR802C

Product type designation

Contact characteristics

| | | | |
|--|----|--|---------------|
| Contact configuration | | | 2 C/O |
| Rated insulation voltage U_i IEC/EN | V | | 250 |
| Rated impulse withstand voltage U_{imp} | kV | | 4 |
| IEC Conventional free air thermal current I_{th} | A | | 30 NO (3A NC) |
| Rated current (I_n) | A | | 30 |
| Relay control voltage | V | | 230VAC |
| Single-phase motor control | | | |

230VAC kW 2.2

| | | | |
|-------------------|----|--|---------|
| Contact impedance | mΩ | | 50 |
| Contact material | | | Ag/SnO2 |

Operating times

| | | | |
|---------|----|--|----|
| Closing | ms | | 25 |
| Opening | ms | | 25 |

Operations

| | | | |
|---------------------|--------|--|---------|
| Mechanical life | cycles | | 5000000 |
| Electrical life AC1 | cycles | | 100000 |

Coil characteristics

| | | | |
|-------------------------------------|----|--|---|
| Average coil consumption AC at 20°C | VA | | 4 |
|-------------------------------------|----|--|---|

Operating range

Closing % U_n 80...110
Opening % U_n 20...55

| | | | |
|-------------------------|----------|--|-----|
| Maximum cycle frequency | cycles/h | | 360 |
|-------------------------|----------|--|-----|

Mechanical features

Operating position

normal Any
With screw

Fixing

Ambient conditions

Temperature

Operating temperature

min °C -40
max °C +85

Storage temperature

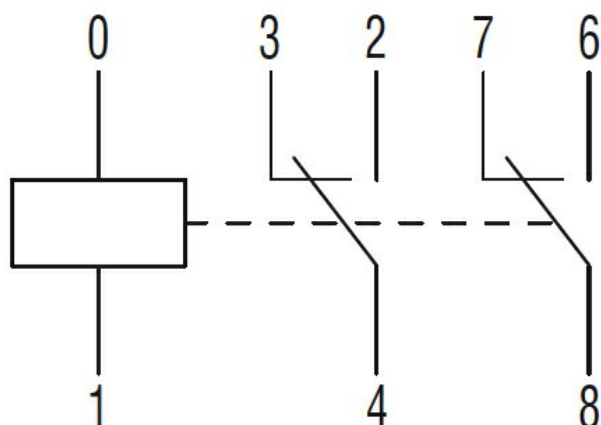
min °C -40
max °C +85

Other features

| | |
|---------------------------------------|----|
| Indication | No |
| Mechanical contact position indicator | No |
| Mechanical test actuator | No |

Dimensions

Wiring diagrams



Certifications and compliance

Compliance

IEC/EN/BS 61810-1

Certificates

cURus

EAC

TUV (ATEX)

VDE

ETIM classification

ETIM 8.0

EC001437 –
Switching relay