



Product designation

INDUSTRIAL  
RELAYS ATEX  
HR802C

Product type designation

### Contact characteristics

Contact configuration		2 C/O
Rated insulation voltage $U_i$ IEC/EN	V	250
Rated impulse withstand voltage $U_{imp}$	kV	4
IEC Conventional free air thermal current $I_{th}$	A	30 NO (3A NC)
Rated current ( $I_n$ )	A	30
Relay control voltage	V	12VDC
Single-phase motor control		

230VAC kW 2.2

Contact impedance	mΩ	50
Contact material		Ag/SnO <sub>2</sub>

### Operating times

Closing	ms	25
Opening	ms	25

### Operations

Mechanical life	cycles	5000000
Electrical life AC1	cycles	100000

### Coil characteristics

Average coil consumption AC at 20°C	VA	1,7
Average coil consumption DC at 20°C	W	1,7

### Operating range

Closing %  $U_n$  80...110  
Opening %  $U_n$  20...55

Maximum cycle frequency	cycles/h	360
-------------------------	----------	-----

### Mechanical features

Operating position	normal	Any
Fixing		With screw

### Ambient conditions

Temperature

Operating temperature

min °C -40  
max °C +85

Storage temperature

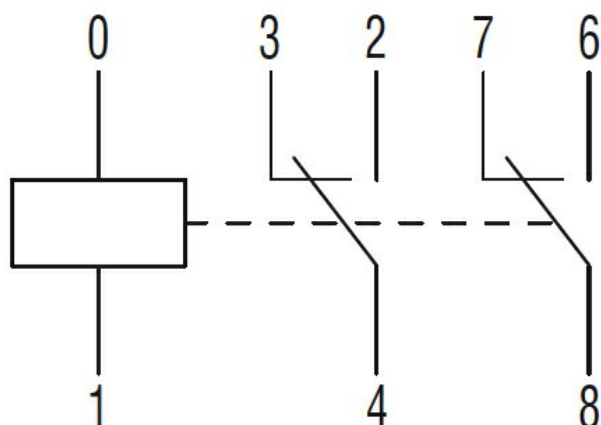
min °C -40  
max °C +85

### Other features

Indication	No
Mechanical contact position indicator	No
Mechanical test actuator	No

### Dimensions

### Wiring diagrams



## Certifications and compliance

### Compliance

IEC/EN/BS 61810-1

### Certificates

cURus

EAC

TUV (ATEX)

VDE

## ETIM classification

ETIM 8.0

EC001437 –  
Switching relay