

# SWITCH DISCONNECTORS AND CHANGEOVER SWITCHES



GL SERIES

# FROM 100A TO 1000A

VERSIONS LISTED  
**UL98**  
for USA and Canada  


## SWITCH DISCONNECTORS

- > **Compact** dimensions
- > Four-pole version with the optional **fourth-pole add-on**
- > From **160A** to **1000A** AC23
- > **100A, 200A, 400A, 600A** and **800A** UL98 listed versions



## WIDE RANGE OF ACCESSORIES

A wide choice of auxiliary contacts, terminal covers, phase barriers, terminal clamps, bridging bars, shafts and handles are available to satisfy every installation need.

# ...SAFE, RELIABLE AND COMPACT



## MANUAL CHANGEOVER SWITCHES

- > **Compact** dimensions
- > **Three-pole** and **four-pole** versions already assembled
- > From **160A** to **1000A** AC23
- > **100A**, **200A** and **400A** UL1008 listed versions

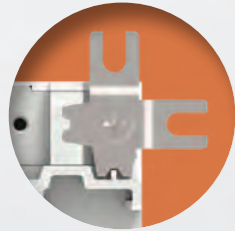


MADE IN ITALY

# THE PERFECT SOLUTION

## SNAP-ON AUXILIARY CONTACTS

Suitable for all the switch disconnectors and changeover switches, the snap-on contacts are mounted on the main switching actuator (max 8 contacts for switch disconnectors; max 4 contacts for changeover switches).



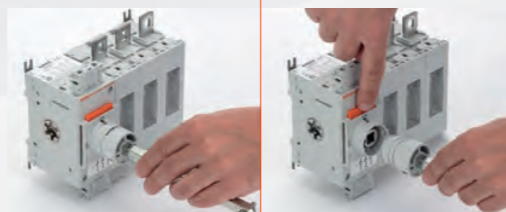
## FLEXIBILITY

Switch disconnectors can be installed in all directions. The clips for screw fixing can be adjusted both in rotation and position (flexible fixing interaxis).



## HIGH IEC ELECTRICAL CAPABILITY

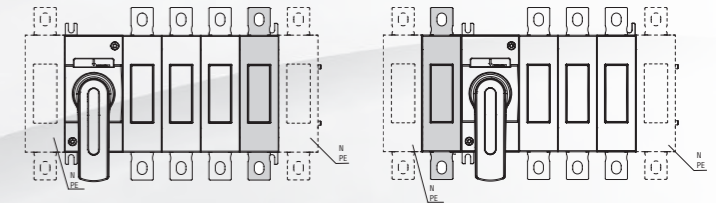
The rated currents in AC23 up to 630A-415V and up to 500A-690V are the highest of the category.



Snap-on shaft mounting and dismounting

## MODULARITY OF COMPONENTS

It is possible to optimize the management of the various product configurations thanks to the modularity of the components: fourth pole, earth and neutral terminals can be mounted by the installer in the desired position.



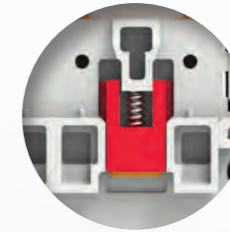
## CAPTIVE NUTS

Accessory that allows even easier wiring of the terminals using a single key.



## ANTI-SLIDE INSERT

For sizes from 160A to 315A there are two rubber pad inserts to prevent the sliding of switch disconnectors on the DIN rail.



## SNAP-ON SHAFT MOUNTING

Shafts can be mounted and released with a simple snap action on the front of the switch. This feature allows fast installation and easy accessibility to the panel in case of maintenance.



## HANDLES

Switch disconnectors and changeover switches are standard supplied without any handles. By purchasing the direct operating handle separately it is possible to create a direct operating version. The handles can be mounted and removed very easily thanks to the snap-on assembly.



### > IP66, IP69K and NEMA 4X

A wide range of screw fixing pistol grip handles are available with the maximum degree of protection on the market.

### > UL508A

In compliance with UL508A standards, which require internal panel inspection by authorized personnel with power applied, pistol handles are available with defeatable feature of the door coupling when the switch disconnector or the changeover switch is closed, i.e. in ON position.

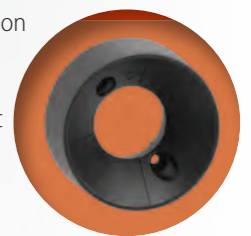
### > Padlockable

All direct and door coupling handles are equipped with integrated padlock mechanism.



### > Shaft alignment ring

To facilitate the insertion of the shaft extension in the door coupling handle, the alignment ring can be mounted.



## VISIBLE CONTACTS: MAXIMUM SECURITY

Thanks to the transparent window on the individual power poles the open or closed switch status is clearly visible at a distance.



## HIGH BREAKING POWER

The high speed switching mechanism features a rotating contact with double breaking on each pole delivering high breaking power.



## FROM 160A TO 315A ALSO IN METAL ENCLOSURES

The metal enclosures are made of painted sheet steel with a padlockable handle. The door is secured by two screws and hinged on the right side of the enclosure. The high degree of protection IP65 allows the use of these enclosures in the most demanding applications.





# ■ SWITCH DISCONNECTORS AND CHANGEOVER SWITCHES GL SERIES



ENERGY AND AUTOMATION

[www.LovatoElectric.com](http://www.LovatoElectric.com)

**LOVATO ELECTRIC S.P. A.**

via Don E. Mazza, 12  
24020 Gorle (Bergamo), ITALY

tel +39 035 4282111  
[info@LovatoElectric.com](mailto:info@LovatoElectric.com)

Follow us



The products described in this publication are subject to be revised or improved at any moment. Catalogue descriptions and details, such as technical and operational data, drawings, diagrams and instructions, etc., do not have any contractual value. In addition, products should be installed and used by qualified personnel and in compliance with the regulations in force for electrical systems in order to avoid damages and safety hazards.