

Product designation			Rotary cam switches		
Product type designation			GX16		
General characteristics					
Switching diagram			52 - Changeover switch 2 poles		
N° of elements			2		
Mounting form			U - Front mounting with black handle		
Contact characteristics					
Rated insulation voltage Ui			IEC/EN	V	690
			UL/CSA	V	600
Rated impulse withstand voltage Uimp			kV	6	
Conventional free air thermal current Ith			IEC/EN	A	16
			UL/CSA	A	12
Rated operational voltage			V	440	
Rated operational impulse voltage			kV	4	
Maximum fuse size for short-circuit protection In (gG)			10kA	A	16
			15kA	A	16
			25kA	A	16
Rated short time current Icw			1s	A	250
Conductivity			10/5 mA/V		
Operational current Ie IEC/EN					
AC1/AC21A			A	16	
AC15			110V	A	10
			220/230V	A	8
			380/400V	A	4
			660/690V	A	1.5
Rated operational power in AC					
Three-phase AC-3			220/230V	kW	3.5
			380/440V	kW	4.5
			500/690V	kW	5.5
Single-phase AC-3			110V	kW	0.55
			220/230V	kW	1.5
			380/440V	kW	2.2
Three-phase AC23A			220/230V	kW	3.7
			380/440V	kW	6.5
			500/690V	kW	7.5
Single-phase AC23A			110V	kW	0.75
			220/230V	kW	1.8
			380/440V	kW	3
Rated operational current in DC					

ROTARY CAM SWITCH GX SERIES, CHANGEOVER SWITCH 2 POLES 16A, FOR FRONT MOUNTING WITH BLACK HANDLE, FRONT PLATE 48X48MM

DC21A

48V	A	16
60V	A	16
110V	A	4
220V	A	0.6
440V	A	0.25

DC23A (poles in series)

24V	A	16 (1)
48V	A	16 (2)
60V	A	16 (3)
110V	A	10 (3)
220V	A	7 (4)

DC13

24V	A	16
48V	A	14
60V	A	10
110V	A	1
220V	A	0.4
440V	A	0.15

Power dissipation	W	0.6
-------------------	---	-----

Mechanical features

Terminals screw	3M
-----------------	----

Tightening torque for terminals max	Nm	0.5
-------------------------------------	----	-----

Conductor size

AWG - Rigid cable

min	AWG	20
Max	AWG	12

AWG - Flexible cable

min	AWG	20
Max	AWG	12

Conductor size (IEC) - Flexible cable

min	mm ²	0.5
Max	mm ²	2.5

Conductor size (IEC) - Rigid cable

min	mm ²	0.5
Max	mm ²	2.5

Mechanical life	cycles	1X10 ⁶
-----------------	--------	-------------------

UL technical data

Motor power for direct-on-line control

for three-phase motor

120V	HP	1.5
240V	HP	3
480V	HP	5
600V	HP	5

for single-phase motor

120V	HP	0.75
240V	HP	1

Ambient conditions

Temperature

Operating temperature

min	°C	-25
max	°C	+55

Storage temperature

min	°C	-40
-----	----	-----

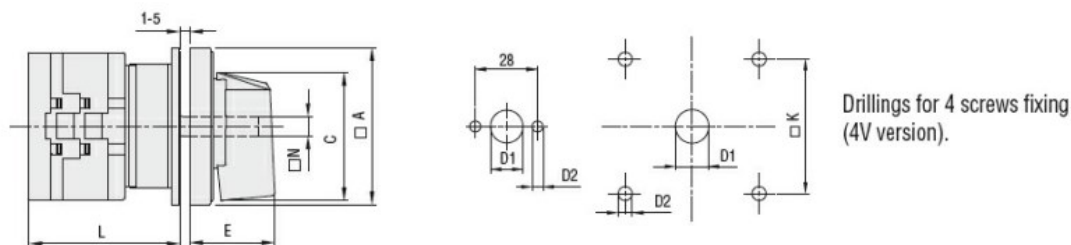
max °C +70

Resistance & Protection

Frontal IP degree IP65

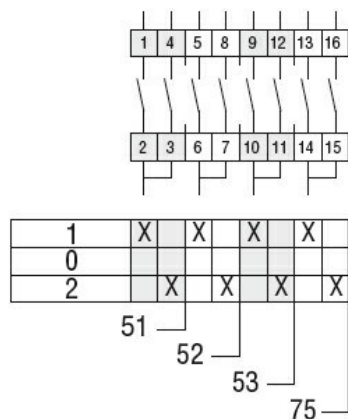
Terminals IP degree IP20

Dimensions



Series	Dimensions							L Number of elements											
	□A	C	ØD1	ØD2	E	□K	□N	1	2	3	4	5	6	7	8	9	10	11	12
GX16	48	39.5	12	5	26.5	36	6	43	51.5	60	68.5	77	85.5	94	102.5	111	119.5	128	136.5
GX20	48	39.5	12	5	26.5	36	6	43	51.5	60	68.5	77	85.5	94	102.5	111	119.5	128	136.5
GX32	65	53	14	5	34.5	48	7	51	63	75	85	99	111	123	135	147	159	171	183
GX40	65	53	14	5	34.5	48	7	51	63	75	85	99	111	123	135	147	159	171	183

Wiring diagrams



Certifications and compliance

Compliance

CSA C22.2 n° 14

IEC/EN/BS 60947-1

IEC/EN/BS 60947-3

IEC/EN/BS 60947-5-1

IEC/EN/BS 61058-1

UL60947-4-1

Certificates

cULus

EAC

ETIM classification

ETIM 8.0

EC001105 - Off-load switch