



| | | | |
|---|-----------|----------|----------------------------|
| Product designation | | | Assembled miniature relays |
| Product type designation | | | HR302C |
| Contact characteristics | | | |
| Contact configuration | | | 2 C/O |
| Rated insulation voltage Ui IEC/EN | V | | 250 |
| Rated impulse withstand voltage Uimp | kV | | 6 |
| IEC Conventional free air thermal current Ith | A | | 8 |
| Maximum instantaneous current | A | | 20 |
| Rated current (In) | A | | 8 |
| Relay control voltage | V | | 24VDC |
| Max contrrollable power in | | | |
| | AC-1 | W | 2000 |
| | AC-15 | VA | 150 |
| Rated operating power AC-1 | | VA | 2000 |
| Rated operating power AC-15 | | | |
| | 230 VAC | VA | 150 |
| Single-phase motor control | | | |
| | 230VAC | kW | 0.2 |
| Rated operating current DC-1 | | | |
| | 30V | A | 8 |
| | 110V | A | 0.3 |
| | 220V | A | 0.1 |
| Minimum switching load | | V / mA | 5 / 100 |
| Contact impedance | | mΩ | 100 |
| Contact material | | | AgSnO2 |
| Operating times | | | |
| Closing | | ms | 10 |
| Opening | | ms | 5 |
| Operations | | | |
| Mechanical life | | cycles | 10000000 |
| Electrical life AC1 | | cycles | 50000 |
| Coil characteristics | | | |
| Average coil consumption AC at 20°C | | VA | 0.9 |
| Average coil consumption DC at 20°C | | W | 0.45 |
| Operating range | | | |
| | Closing | % Un | 75...110 |
| | Opening | % Un | 10...30 |
| Maximum cycle frequency | | cycles/h | 3600 |
| Mechanical features | | | |
| Max socket terminal tightening torque | | Nm | 0.6 |
| Socket screw tightening tool (cross / flat blade) | | | PH1 / 4.5mm |
| Conductor section | | | |
| | AWG/Kcmil | | |

| | | | |
|--------------------|-----|--------|---------------------------------|
| | | min | 20 |
| | | max | 14 |
| | IEC | | |
| | | min | mm ² 0.5 |
| | | max | mm ² 2.5 |
| Operating position | | | |
| | | normal | Any |
| Fixing | | | On 35mm DIN rail and with screw |

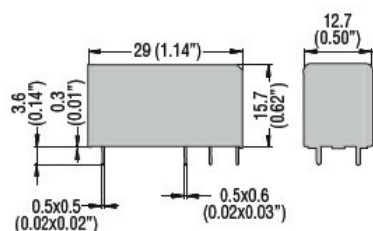
Ambient conditions

| | | | | |
|-------------|-----------------------|---------------------|-----|-----|
| Temperature | Operating temperature | min | °C | -40 |
| | | max | °C | +85 |
| | | <hr/> | | |
| | | Storage temperature | | |
| | min | °C | -40 | |
| | max | °C | +85 | |

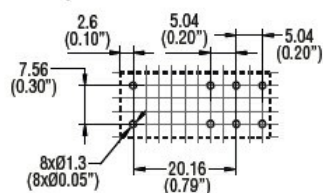
Other features

| | |
|---------------------------------------|----|
| Indication | No |
| Mechanical contact position indicator | No |
| Mechanical test actuator | No |

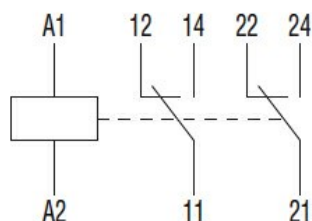
Dimensions



PCB layout



Wiring diagrams



Certifications and compliance

| | |
|---------------------|-------------------------------|
| Compliance | IEC/EN 61810 |
| ETIM classification | |
| ETIM 8.0 | EC001437 - Switching relay |