

PLASTIC COMPLETE CONTROL STATIONS



IP69K
TYPE 4X

PLatinum

 **Lovato**
electric

ENERGY AND AUTOMATION

WITH 1 ACTUATOR



LPZP1B8100



LPZP1B8101



LPZP1B8102



LPZP1B8103



LPZP1B8104



LPZP1B8105



LPZP1B8300



LPZP1B8301



LPZP1B8302



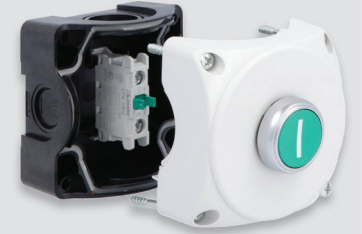
LPZP1B8303

Order code	Actuator description	Contacts config.
Grey control station.		
LPZP1B8100	Green spring return flush pushbutton with "I" symbol	1NO
LPZP1B8101	Green spring return flush pushbutton with "START" symbol	1NO
LPZP1B8102	Red spring return flush pushbutton with "0" symbol	1NC
LPZP1B8103	Red spring return flush pushbutton with "STOP" symbol	1NC
LPZP1B8104	Red spring return extended pushbutton with "0" symbol	1NC
LPZP1B8105	Red spring return extended pushbutton with "STOP" symbol	1NC

Order code	Actuator description	Contacts config.
Grey control station.		
LPZP1B8300	Selector switch lever , 2 position with label "0-I"	1NO
LPZP1B8301	Selector switch key , 2 position with label "0-I"	1NO
LPZP1B8302	Selector switch key , 2 position with label "0-I"	1NO+1NC
LPZP1B8303	Selector switch lever , 3 position with label "I-0-II"	2NO

General characteristics

- Compact dimensions
- Easy wiring
- Numerous cable entries
- Contact elements base-mount on control station.



Operational characteristics

- Cable entry knockouts:
 - M16/PG11 (1 at rear and 1 on left side)
 - M20/M25/PG13.5/PG16 (1 each on top and bottom)
- Any mounting position allowed
- Tightening torque of cover screws Tmax: 1.8Nm/16lbin
- Ambient conditions:
 - operating temperature: -25...+70°C
 - storage temperature: -40...+85°C
- Degree of protection:
 - per IEC/EN: IP66, IP67 and IP69K
 - per UL: Type 1, 2, 3R, 4, 4X, 12K.

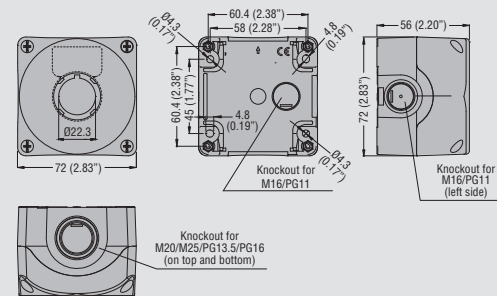
Materials

Polycarbonate.

Certifications and compliance

Certifications obtained: cULus, EAC, CCC, RINA.
Compliant with standards: IEC/EN 60947-1, IEC/EN 60947-5-1, UL508A, CSA C22.2 n° 14.

Dimensions [mm(in)]



WITH 1 ACTUATOR



Order code	Actuator description	Contacts config.
Yellow control station.		
LPZP1B5600	Mushroom head pushbutton, latch, turn to release for emergency stopping, ISO 13850 with plastic disk EMERGENCY/STOP	1NC
LPZP1B5601	Mushroom head pushbutton, latch, turn to release for emergency stopping, ISO 13850	2NC
LPZP1B5602	Mushroom head pushbutton, latch, turn to release for normal stopping	1NC
LPZP1B5603	Mushroom head pushbutton, latch, turn to release for emergency stopping, ISO 13850	1NC
LPZP1B5604	Mushroom head pushbutton, latch, turn to release for emergency stopping, ISO 13850	1NO+1NC
LPZP1B5605	Mushroom head pushbutton, latch, turn key to release for emergency stopping, ISO 13850 with plastic disk EMERGENCY/STOP	1NC
LPZP1B5606	Mushroom head pushbutton, latch, turn key to release for emergency stopping, ISO 13850	2NC
LPZP1B5607	Mushroom head pushbutton, latch, turn key to release for emergency stopping, ISO 13850	1NO+1NC
LPZP1B5608	Mushroom head pushbutton, latch, pull to release for emergency stopping, ISO 13850 with plastic disk EMERGENCY/STOP	1NC
LPZP1B5609	Mushroom head pushbutton, latch, pull to release for emergency stopping, ISO 13850	2NC
LPZP1B5610	Mushroom head pushbutton, latch, pull to release for emergency stopping, ISO 13850	1NO+1NC
LPZP1B5611	Mushroom head pushbutton, latch, pull to release for emergency stopping, ISO 13850 with padlockable protection	1NC
LPZP1B5612	Mushroom head pushbutton, latch, turn to release for normal stopping with label "STOP"	1NC
Yellow control station with protection.		
LPZP1B5P603	Mushroom head pushbutton, latch, turn to release for emergency stopping, ISO 13850	1NC

ⓘ Not included in cULus homologation.

General characteristics

- Compact dimensions
- Easy wiring
- Numerous cable entries
- Contact elements base-mount on control station.



Operational characteristics

- Cable entry knockouts:
 - M16/PG11 (1 at rear and 1 on left side)
 - M20/M25/PG13.5/PG16 (1 each on top and bottom)
- Any mounting position allowed
- Tightening torque of cover screws Tmax: 1.8Nm/16lbin
- Ambient conditions:
 - operating temperature: -25...+70°C
 - storage temperature: -40...+85°C
- Degree of protection:
 - per IEC/EN: IP66, IP67 and IP69K
 - per UL: Type 1, 2, 3R, 4, 4X, 12K.

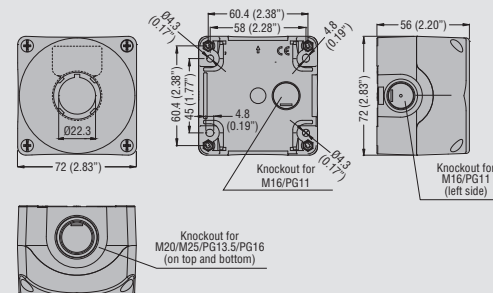
Materials

Polycarbonate.

Certifications and compliance

Certifications obtained: cULus, EAC, CCC, RINA.
Compliant with standards: IEC/EN 60947-1, IEC/EN 60947-5-1, UL508A, CSA C22.2 n° 14.

Dimensions [mm(in)]



WITH 2 ACTUATORS



Order code	Actuator description	Contacts config.
Grey control station.		
LPZP2B8900	Green spring return flush pushbutton with "I" symbol	1NO
	Red spring return flush pushbutton with "O" symbol	1NC
LPZP2B8901	Green spring return flush pushbutton with "I" symbol	1NO
	Red spring return extended pushbutton with "O" symbol	1NC
LPZP2B8902	White spring return flush pushbutton with "up arrow" symbol	1NO
	Black spring return flush pushbutton with "down arrow" symbol	1NO
LPZP2B8903	White spring return flush pushbutton with "right arrow" symbol	1NO
	Black spring return flush pushbutton with "left arrow" symbol	1NO
LPZP2B8904	Green spring return flush pushbutton with "I" symbol	1NO
	Mushroom head pushbutton, latch, turn to release for emergency stopping, ISO 13850	1NC
Yellow control station.		
LPZP2B5905	Mushroom head pushbutton, latch, turn key to release for emergency stopping, ISO 13850	1NO+1NC
	Red steady pilot light 12...30VAC/DC	-

General characteristics

- Compact dimensions
- Easy wiring
- Numerous cable entries
- Contact elements and LED elements, base-mount on control station.



Operational characteristics

- Cable entry knockouts:
 - M16/PG11 (2 at rear)
 - M20/PG13,5 (1 on each side)
 - M20/M25/PG13,5/PG16 (1 each on top and bottom)
- Any mounting position allowed
- Tightening torque of cover screws T_{max}: 1.8Nm (16lbn)
- Ambient conditions:
 - operating temperature: -25...+70°C
 - storage temperature: -40...+85°C
- Degree of protection:
 - per IEC/EN: IP66, IP67 and IP69K
 - per UL: Type 1, 2, 3R, 4, 4X, 12K.

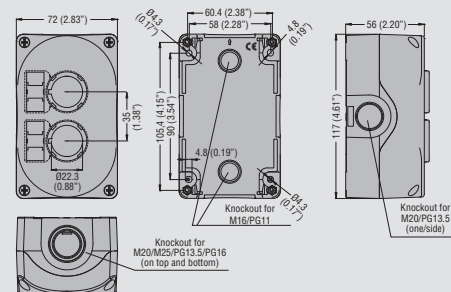
Materials

Polycarbonate.

Certifications and compliance

Certifications obtained: cULus, EAC, CCC, RINA.
Compliant with standards: IEC/EN 60947-1, IEC/EN 60947-5-1, UL508A, CSA C22.2 n° 14.

Dimensions [mm(in)]



WITH 3 ACTUATORS



Order code	Actuator description	Contacts config.
Grey control station.		
LPZP3B8900	Green spring return flush pushbutton with "I" symbol	1NO
	Red spring return flush pushbutton with "O" symbol	1NC
	Red steady pilot light 12...30VAC/DC	-
LPZP3B8901	Green spring return flush pushbutton with "I" symbol	1NO
	Red spring return extended pushbutton with "O" symbol	1NC
	Red steady pilot light 12...30VAC/DC	-
LPZP3B8902	Green spring return flush pushbutton with "I" symbol	1NO
	Red spring return flush pushbutton with "O" symbol	1NC
	Green spring return flush pushbutton with "II" symbol	1NO
LPZP3B8903	Green spring return flush pushbutton with "I" symbol	1NO
	Red spring return extended pushbutton with "O" symbol	1NC
	Green spring return flush pushbutton with "II" symbol	1NO
LPZP3B8904	White spring return flush pushbutton with "I" symbol	1NO
	Red spring return flush pushbutton with "O" symbol	1NC
	White spring return flush pushbutton with "II" symbol	1NO
LPZP3B8905	White spring return flush pushbutton with "I" symbol	1NO
	Red spring return extended pushbutton with "O" symbol	1NC
	White spring return flush pushbutton with "II" symbol	1NO
LPZP3B8906	White spring return flush pushbutton with "up arrow" symbol	1NO
	Red spring return flush pushbutton with "O" symbol	1NC
	Black spring return flush pushbutton with "down arrow" symbol	1NO
LPZP3B8907	White spring return flush pushbutton with "up arrow" symbol	1NO
	Red spring return extended pushbutton with "O" symbol	1NC
	Black spring return flush pushbutton with "down arrow" symbol	1NO
LPZP3B8908	White spring return flush pushbutton with "right arrow" symbol	1NO
	Red spring return flush pushbutton with "O" symbol	1NC
	Black spring return flush pushbutton with "left arrow" symbol	1NO
LPZP3B8909	White spring return flush pushbutton with "right arrow" symbol	1NO
	Red spring return extended pushbutton with "O" symbol	1NC
	Black spring return flush pushbutton with "left arrow" symbol	1NO
LPZP3B8910	Green spring return flush pushbutton with "I" symbol	1NO
	Red spring return flush pushbutton with "O" symbol	1NC
	Green steady pilot light 12...30VAC/DC	-
LPZP3B8911	Green spring return flush pushbutton with "I" symbol	1NO
	Red spring return extended pushbutton with "O" symbol	1NC
	Green steady pilot light 12...30VAC/DC	-
LPZP3B8912	Green spring return flush pushbutton	1NO
	Red spring return flush pushbutton	1NC
	Mushroom head spring return pushbutton	1NC

General characteristics

- Compact dimensions
- Easy wiring
- Numerous cable entries
- Contact elements and LED elements, base-mount on control station.



Operational characteristics

- Cable entry knockouts:
 - M16/PG11 (2 at rear)
 - M20/PG13,5 (2 on each side)
 - M20/M25/PG13,5/PG16 (1 each on top and bottom)
- Any mounting position allowed
- Tightening torque of cover screws T_{max}: 1,8Nm (16lbn)
- Ambient conditions:
 - operating temperature: -25...+70°C
 - storage temperature: -40...+85°C
- Degree of protection:
 - per IEC/EN: IP66, IP67 and IP69K
 - per UL: Type 1, 2, 3R, 4, 4X, 12K.

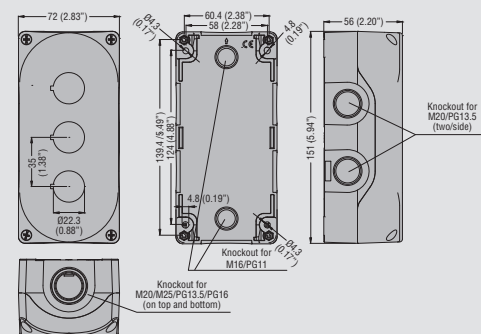
Materials

Polycarbonate.

Certifications and compliance

Certifications obtained: cULus, EAC, CCC, RINA.
Compliant with standards: IEC/EN 60947-1, IEC/EN 60947-5-1, UL508A, CSA C22.2 n° 14.

Dimensions [mm(in)]



COMPONENTS TO BUILD OF COMPLETE CONTROL STATIONS

Push buttons



Complete control station	Control station		Actuator		Contacts		Accessories	
LPZP1B8100	LPZP1A8	Grey	LPCB1113	Green flush with "I"	LPXCB10	1NO	—	
LPZP1B8101	LPZP1A8	Grey	LPCB1163	Green flush with "START"	LPXCB10	1NO	—	
LPZP1B8102	LPZP1A8	Grey	LPCB1104	Red flush with "O"	LPXCB01	1NC	—	
LPZP1B8103	LPZP1A8	Grey	LPCB1134	Red flush with "STOP"	LPXCB01	1NC	—	
LPZP1B8104	LPZP1A8	Grey	LPCB2104	Red extended with "O"	LPXCB01	1NC	—	
LPZP1B8105	LPZP1A8	Grey	LPCB2134	Red extended with "STOP"	LPXCB01	1NC	—	

Mushroom head pushbuttons Ø40mm



Complete control station	Control station		Actuator		Contacts		Accessories			
LPZP1B5600	LPZP1A5	Yellow	LPCB6644	Latch, turn to release	LPXCB01	1NC	LPXAU115	EMERGENCY/STOP disk		
LPZP1B5601	LPZP1A5	Yellow	LPCB6644	Latch, turn to release	LPXCB01	1NC	—			
					LPXCB01	1NC	—			
LPZP1B5602	LPZP1A5	Yellow	LPCB6344	Latch, turn to release	LPXCB01	1NC	—			
LPZP1B5603	LPZP1A5	Yellow	LPCB6644	Latch, turn to release	LPXCB01	1NC	—			
LPZP1B5604	LPZP1A5	Yellow	LPCB6644	Latch, turn to release	LPXCB10	1NO	—			
					LPXCB01	1NC	—			
LPZP1B5605	LPZP1A5	Yellow	LPCB6844	Latch, turn key to release	LPXCB01	1NC	LPXAU115	EMERGENCY/STOP disk		
LPZP1B5606	LPZP1A5	Yellow	LPCB6844	Latch, turn key to release	LPXCB01	1NC	—			
					LPXCB01	1NC	—			
LPZP1B5607	LPZP1A5	Yellow	LPCB6844	Latch, turn key to release	LPXCB10	1NO	—			
					LPXCB01	1NC	—			
LPZP1B5608	LPZP1A5	Yellow	LPCB6744	Latch, pull to release	LPXCB01	1NC	LPXAU115	EMERGENCY/STOP disk		
LPZP1B5609	LPZP1A5	Yellow	LPCB6744	Latch, pull to release	LPXCB01	1NC	—			
					LPXCB01	1NC	—			
LPZP1B5610	LPZP1A5	Yellow	LPCB6744	Latch, pull to release	LPXCB10	1NO	—			
					LPXCB01	1NC	—			
LPZP1B5611	LPZP1A5	Yellow	LPCB6744	Latch, pull to release	LPXCB01	1NC	LPXAU158	Padlockable protection		
LPZP1B5612	LPZP1A5	Yellow	LPCB6344	Latch, turn to release	LPXCB01	1NC	8LM2TAGB230	"STOP" label	LPXAU100	Label holder
LPZP1B5P603	LPZP1A5P	Yellow with protection	LPCB6644	Latch, turn to release	LPXCB01	1NC	—			

COMPONENTS TO BUILD OF COMPLETE CONTROL STATIONS

Selectors



Complete control station	Control station		Actuator		Contacts		Accessories			
LPZP1B8300	LPZP1A8	Grey	LPCS120	Short lever, 2 maintained positions	LPXCB10	1NO	8LM2TAU203	"0-I" label	LPXAU100	Label holder
LPZP1B8301	LPZP1A8	Grey	LPCS320	With key, 2 positions	LPXCB10	1NO	8LM2TAU203	"0-I" label	LPXAU100	Label holder
LPZP1B8302	LPZP1A8	Grey	LPCS320	With key, 2 positions	LPXCB10	1NO	8LM2TAU203	"0-I" label	LPXAU100	Label holder
	LPZP1A8	Grey			LPXCB01	1NC				
LPZP1B8303	LPZP1A8	Grey	LPCS130	Short lever, 3 maintained positions	LPXCB10	1NO	8LM2TAU205	"I-O-II" label	LPXAU100	Label holder
	LPZP1A8	Grey			LPXCB10	1NO				

2 actuators



Complete control station	Control station		Actuators			Contacts and LED elements	
LPZP2B8900	LPZP2A8	Grey	LPCB1113	Green flush pushbutton with "I"	LPXCB10	1NO	
			LPCB1104	Red flush pushbutton with "O"	LPXCB01	1NC	
LPZP2B8901	LPZP2A8	Grey	LPCB1113	Green flush pushbutton with "I"	LPXCB10	1NO	
			LPCB2104	Red extended pushbutton with "O"	LPXCB01	1NC	
LPZP2B8902	LPZP2A8	Grey	LPCB1158	White flush pushbutton with "up arrow"	LPXCB10	1NO	
			LPCB1152	White flush pushbutton with "down arrow"	LPXCB10	1NO	
LPZP2B8903	LPZP2A8	Grey	LPCB1148	White flush pushbutton with "right arrow"	LPXCB10	1NO	
			LPCB1142	White flush pushbutton with "left arrow"	LPXCB10	1NO	
LPZP2B8904	LPZP2A8	Grey	LPCB1113	Green flush pushbutton with "I"	LPXCB10	1NO	
			LPCB6644	Mushroom head pushbutton Ø40mm, latch, turn to release	LPXCB01	1NC	
LPZP2B5905	LPZP2A5	Yellow	LPCB6844	Mushroom head pushbutton Ø40mm, latch, turn key to release	LPXCB10	1NO	
					LPXCB01	1NC	
			LPL4	Red pilot light head	LPXLPBB4	24VAC/DC	

COMPONENTS TO BUILD OF COMPLETE CONTROL STATIONS



3 actuators



Complete control station	Control station		Actuators		Contacts and LED elements	
LPZP3B8900	LPZP3A8	Grey	LPCB1113	Green flush pushbutton with "I"	LPXCB10	1NO
			LPCB1104	Red flush pushbutton with "O"	LPXCB01	1NC
			LPL4	Red pilot light head	LPXLPBB4	24VAC/DC
LPZP3B8901	LPZP3A8	Grey	LPCB1113	Green flush pushbutton with "I"	LPXCB10	1NO
			LPCB2104	Red extended pushbutton with "O"	LPXCB01	1NC
			LPL4	Red pilot light head	LPXLPBB4	24VAC/DC
LPZP3B8902	LPZP3A8	Grey	LPCB1113	Green flush pushbutton with "I"	LPXCB10	1NO
			LPCB1104	Red flush pushbutton with "O"	LPXCB01	1NC
			LPCB1123	Green flush pushbutton with "II"	LPXCB10	1NO
LPZP3B8903	LPZP3A8	Grey	LPCB1113	Green flush pushbutton with "I"	LPXCB10	1NO
			LPCB2104	Red extended pushbutton with "O"	LPXCB01	1NC
			LPCB1123	Green flush pushbutton with "II"	LPXCB10	1NO
LPZP3B8904	LPZP3A8	Grey	LPCB1118	White flush pushbutton with "I"	LPXCB10	1NO
			LPCB1104	Red flush pushbutton with "O"	LPXCB01	1NC
			LPCB1128	White flush pushbutton with "II"	LPXCB10	1NO
LPZP3B8905	LPZP3A8	Grey	LPCB1118	White flush pushbutton with "I"	LPXCB10	1NO
			LPCB2104	Red extended pushbutton with "O"	LPXCB01	1NC
			LPCB1128	White flush pushbutton with "II"	LPXCB10	1NO
LPZP3B8906	LPZP3A8	Grey	LPCB1158	White flush pushbutton with "up arrow"	LPXCB10	1NO
			LPCB1104	Red flush pushbutton with "O"	LPXCB01	1NC
			LPCB1152	Black flush pushbutton with "up arrow"	LPXCB10	1NO
LPZP3B8907	LPZP3A8	Grey	LPCB1158	White flush pushbutton with "up arrow"	LPXCB10	1NO
			LPCB2104	Red extended pushbutton with "O"	LPXCB01	1NC
			LPCB1152	Black flush pushbutton with "up arrow"	LPXCB10	1NO
LPZP3B8908	LPZP3A8	Grey	LPCB1148	White flush pushbutton with "right arrow"	LPXCB10	1NO
			LPCB1104	Red flush pushbutton with "O"	LPXCB01	1NC
			LPCB1142	Black flush pushbutton with "left arrow"	LPXCB10	1NO
LPZP3B8909	LPZP3A8	Grey	LPCB1148	White flush pushbutton with "right arrow"	LPXCB10	1NO
			LPCB2104	Red extended pushbutton with "O"	LPXCB01	1NC
			LPCB1142	Black flush pushbutton with "left arrow"	LPXCB10	1NO
LPZP3B8910	LPZP3A8	Grey	LPCB1113	Green flush pushbutton with "I"	LPXCB10	1NO
			LPCB1104	Red flush pushbutton with "O"	LPXCB01	1NC
			LPL3	Green pilot light head	LPXLPBB3	24VAC/DC
LPZP3B8911	LPZP3A8	Grey	LPCB1113	Green flush pushbutton with "I"	LPXCB10	1NO
			LPCB2104	Red extended pushbutton with "O"	LPXCB01	1NC
			LPL3	Green pilot light head	LPXLPBB3	24VAC/DC
LPZP3B8912	LPZP3A8	Grey	LPCB103	Green spring return flush pushbutton	LPXCB10	1NO
			LPCB104	Red spring return flush pushbutton	LPXCB01	1NC
			LPCB6144	Mushroom head Ø40mm spring return pushbutton	LPXCB01	1NC

PERSONALIZED CONTROL STATIONS FOR OEMs!

LOVATO Electric can provide customized control stations assembled to meet the needs of machine manufacturers.



- choice of pushbutton panels from 1 to 6 holes;
- wide range of available operators;
- customization of the symbols of the operators on request;
- customization of the push-button panel with laser lines dedicated to your application.



Laser engraving with customized logo and texts

Wide range of actuators



Double and triple-touch actuators



Illuminated actuators



Illuminated mushroom head actuators



LED monoblock pilot lights



Knob selector actuators



Monoblock potentiometers



Monoblock buzzers



Communication interfaces



■ PLASTIC COMPLETE CONTROL STATIONS PLATINUM SERIES



ENERGY AND AUTOMATION

www.LovatoElectric.com

LOVATO ELECTRIC S.P. A.

via Don E. Mazza, 12
24020 Gorle (Bergamo), ITALY

tel +39 035 4282111
info@LovatoElectric.com



- **LOVATO ELECTRIC LTD**
UNITED KINGDOM
www.Lovato.co.uk
- **LOVATO ELECTRIC CORPORATION**
CANADA
www.Lovato.ca
- **LOVATO ELECTRIC INC**
UNITED STATES
www.LovatoUsa.com
- **LOVATO ELECTRIC GmbH**
GERMANY
www.LovatoElectric.de
- **LOVATO ELECTRIC S.L.U**
SPAIN
www.LovatoElectric.es
- **LOVATO ELECTRIC. S.R.O.**
CZECH REPUBLIC
www.LovatoElectric.cz
- **LOVATO ELECTRIC SP. Z O.O.**
POLAND
www.LovatoElectric.pl
- **LOVATO ELEKTRIK LTD**
TURKEY
www.LovatoElectric.com.tr
- **LOVATO ELECTRIC ME FZE**
UNITED ARAB EMIRATES
www.LovatoElectric.ae
- **ООО Ловато Электрик**
RUSSIA
www.LovatoElectric.ru
- **LOVATO ELECTRIC CO LTD**
CHINA
www.LovatoElectric.cn
- **LOVATO ELECTRIC SRL**
ROMANIA
www.LovatoElectric.ro
- **LOVATO ELECTRIC SAS**
FRANCE
www.LovatoElectric.fr
- **LOVATO ELECTRIC AG**
SWITZERLAND
www.LovatoElectric.ch