



Product designation

INDUSTRIAL
RELAYS ATEX
HR802C

Product type designation

Contact characteristics

Contact configuration		2 C/O
Rated insulation voltage U_i IEC/EN	V	250
Rated impulse withstand voltage U_{imp}	kV	4
IEC Conventional free air thermal current I_{th}	A	30 NO (3A NC)
Rated current (I_n)	A	30
Relay control voltage	V	24VAC
Single-phase motor control		

230VAC kW 2.2

Contact impedance	mΩ	50
Contact material		Ag/SnO ₂

Operating times

Closing	ms	25
Opening	ms	25

Operations

Mechanical life	cycles	5000000
Electrical life AC1	cycles	100000

Coil characteristics

Average coil consumption AC at 20°C	VA	4
-------------------------------------	----	---

Operating range

Closing % U_n 80...110
Opening % U_n 20...55

Maximum cycle frequency	cycles/h	360
-------------------------	----------	-----

Mechanical features

Operating position

normal Any

Fixing		With screw
--------	--	------------

Ambient conditions

Temperature

Operating temperature

min °C -40
max °C +85

Storage temperature

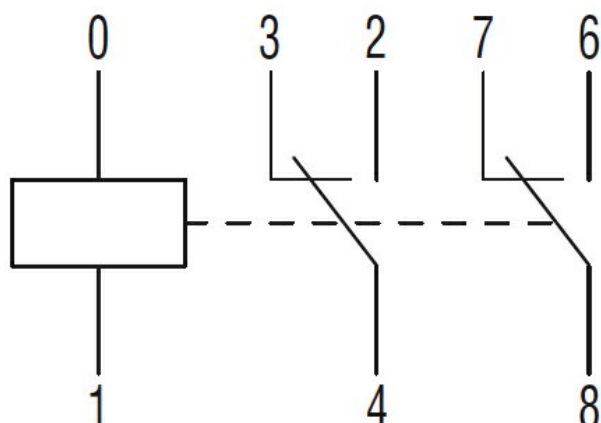
min °C -40
max °C +85

Other features

Indication	No
Mechanical contact position indicator	No
Mechanical test actuator	No

Dimensions

Wiring diagrams



Certifications and compliance

Compliance

IEC/EN/BS 61810-1

Certificates

cURus

EAC

TUV (ATEX)

VDE

ETIM classification

ETIM 8.0

EC001437 –
Switching relay