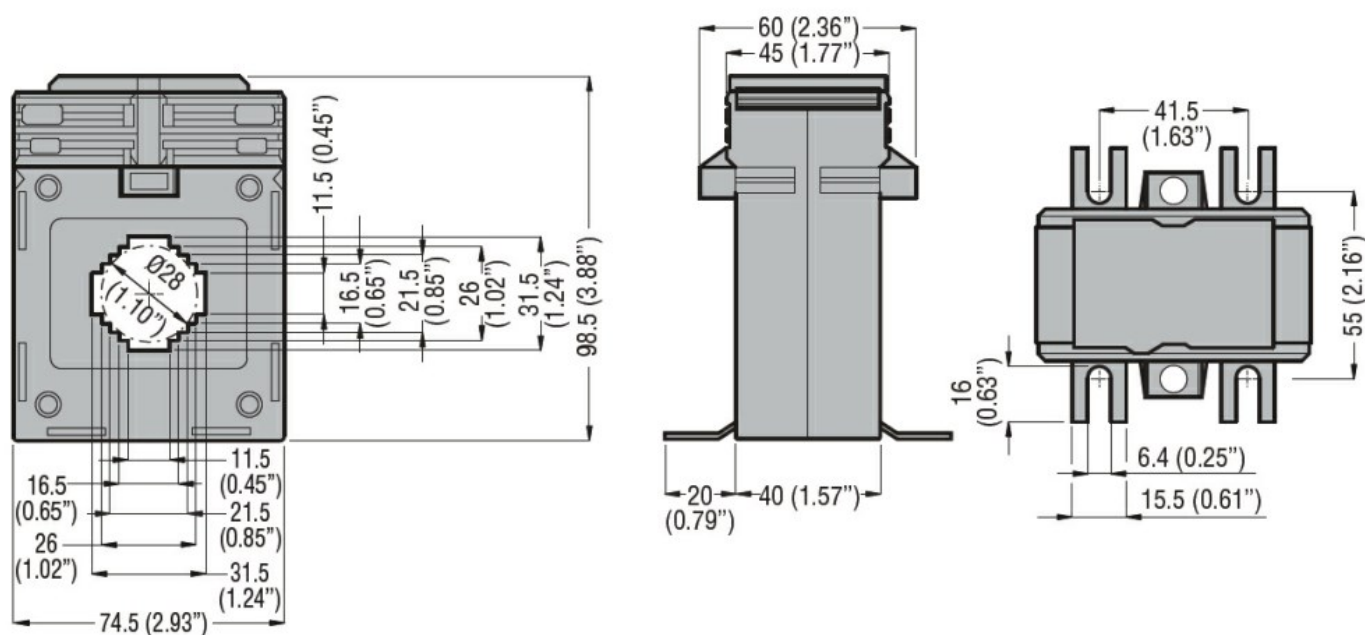




Product designation			Current transformers	
Product type designation			DM1TP0080	
Type of CT			Solid-core	
Current inputs				
Primary current I _{pn} (/5)			A	80
Operational frequency			min	Hz
			max	Hz
Secondary output current			A	5
Overload withstand I _{pn}			%	120
Burden			cl. 0.5s	VA
			cl. 0.5	VA
Insulations				
Rated insulation voltage U _i IEC/EN			V	720
IEC rated short-time thermal current I _{th}			I _{th} for s	40...60
IEC rated dynamic current I _{dyn}			I _{th} for s	2.5
Insulation dry type			Class E	
Mechanical features				
Terminals type			Screw	
Fixing			DIN rail or by Screw	
Weight			g	580
Ambient conditions				
Temperature			Operating temperature	
			min	°C
			max	°C
			Storage temperature	
			min	°C
			max	°C
Relative humidity			%	90
Protection degree			IP30	
Dimensions				



Certifications and compliance

Certifications

IEC/EN/BS 61869-1

IEC/EN/BS 61869-2

Compliance

EAC

ETIM classification

EC000066 - Power contactor, AC switching

□